

KPNA2 Monoclonal antibody

Catalog Number: 66870-1-Ig

Basic Information

Catalog Number:

66870-1-Ig

Size:

1700 ug/ml

Source:

Mouse

Isotype:

IgG1

Immunogen Catalog Number:

AG28386

GenBank Accession Number:

BC005978

GeneID (NCBI):

3838

UNIPROT ID:

P52292

Full Name:

karyopherin alpha 2 (RAG cohort 1, importin alpha 1)

Calculated MW:

57.8 kDa

Observed MW:

55-58 kDa

Purification Method:

Protein A purification

CloneNo.:

2G9C1

Recommended Dilutions:

WB 1:1000-1:5000

IHC 1:300-1:1200

IF/ICC 1:400-1:1600

Applications

Tested Applications:

WB, IHC, IF/ICC, ELISA

Species Specificity:

human

Note-IHC: suggested antigen retrieval with TE buffer pH 9.0; (*) Alternatively, antigen retrieval may be performed with citrate buffer pH 6.0

Positive Controls:

WB : HeLa cells, HEK-293 cells, MCF-7 cells, Jurkat cells, Raji cells

IHC : human skin cancer tissue,

IF/ICC : MCF-7 cells,

Background Information

KPNA2 (karyopherin α 2) is a nuclear import factor involved in the nucleocytoplasmic transport system. It is functionally involved in the tumor progression and is elevated in multiple cancers. KPNA2 expression may be a useful prognostic biomarker to monitor cancer prognosis.

Storage

Storage:

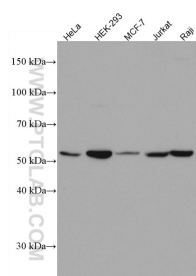
Store at -20°C. Stable for one year after shipment.

Storage Buffer:

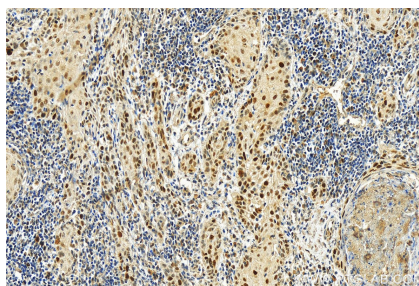
PBS with 0.02% sodium azide and 50% glycerol pH 7.3.

Aliquoting is unnecessary for -20°C storage

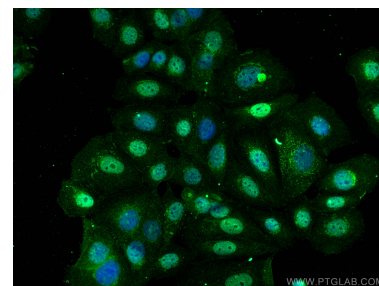
Selected Validation Data



Various lysates were subjected to SDS PAGE followed by western blot with 66870-1-Ig (KPNA2 antibody) at dilution of 1:3000 incubated at room temperature for 1.5 hours.



Immunohistochemical analysis of paraffin-embedded skin cancer slide using 66870-1-Ig (KPNA2 antibody) at dilution of 1:600 (under 20x lens). Heat mediated antigen retrieval with Tris-EDTA buffer (pH 9.0).



Immunofluorescent analysis of (4% PFA) fixed MCF-7 cells using KPNA2 antibody (66870-1-Ig, Clone: 2G9C1) at dilution of 1:800 and Coralite®488-Conjugated AffiniPure Goat Anti-Mouse IgG(H+L).