

For Research Use Only

# PCK1 Monoclonal antibody

Catalog Number: 66862-1-Ig **1 Publications**



## Basic Information

<b>Catalog Number:</b> 66862-1-Ig	<b>GenBank Accession Number:</b> BC023978	<b>Purification Method:</b> Protein G purification
<b>Concentration:</b> 1000 µg/ml	<b>GeneID (NCBI):</b> 5105	<b>CloneNo.:</b> 2F11B5
<b>Source:</b> Mouse	<b>UNIPROT ID:</b> P35558	<b>Recommended Dilutions:</b> WB 1:1000-1:4000 IHC 1:200-1:800 IF/ICC 1:400-1:1600
<b>Isotype:</b> IgG1	<b>Full Name:</b> phosphoenolpyruvate carboxykinase 1 (soluble)	
<b>Immunogen Catalog Number:</b> AG9720	<b>Calculated MW:</b> 622 aa, 69 kDa	
	<b>Observed MW:</b> 65-69 kDa	

## Applications

<b>Tested Applications:</b> WB, IHC, IF/ICC, ELISA	<b>Positive Controls:</b> WB : pig kidney tissue, pig liver tissue, rat liver tissue IHC : mouse kidney tissue, human kidney tissue, human colon tissue IF/ICC : HeLa cells,
<b>Cited Applications:</b> WB, IF	
<b>Species Specificity:</b> Human, Mouse, Rat, Pig	
<b>Cited Species:</b> monkey	
<b>Note-IHC: suggested antigen retrieval with TE buffer pH 9.0; (*) Alternatively, antigen retrieval may be performed with citrate buffer pH 6.0</b>	

## Background Information

PCK1(Phosphoenolpyruvate carboxykinase, cytosolic) is also named as PEPCK1 and belongs to the phosphoenolpyruvate carboxykinase [GTP] family. It catalyzes the formation of phosphoenolpyruvate from oxaloacetate, with the release of carbon dioxide and GDP. It is also a main control point for the regulation of gluconeogenesis. In eukaryotes there are two isozymes: a cytoplasmic one and a mitochondrial one. Defects in PCK1 are the cause of cytosolic phosphoenolpyruvate carboxykinase deficiency (C-PEPCKD).

## Notable Publications

Author	Pubmed ID	Journal	Application
Ying-Xian Ma	39433189	Int J Biol Macromol	WB,IF

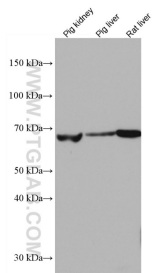
## Storage

**Storage:**  
Store at -20°C. Stable for one year after shipment.  
**Storage Buffer:**  
PBS with 0.02% sodium azide and 50% glycerol pH 7.3.  
Aliquoting is unnecessary for -20°C storage

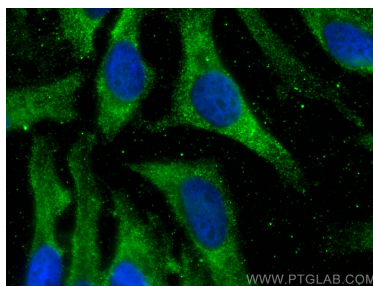
For technical support and original validation data for this product please contact:  
T: 4006900926 E: Proteintech-CN@ptglab.com W: ptgcn.com

This product is exclusively available under Proteintech Group brand and is not available to purchase from any other manufacturer.

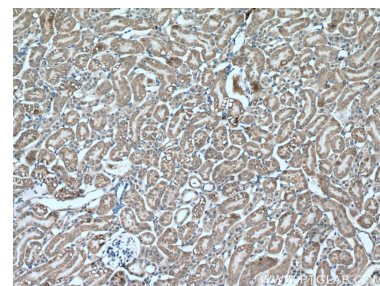
## Selected Validation Data



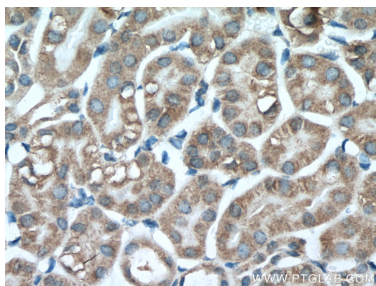
Various lysates were subjected to SDS PAGE followed by western blot with 66862-1-Ig (PCK1 antibody) at dilution of 1:2000 incubated at room temperature for 1.5 hours.



Immunofluorescent analysis of (-20°C Ethanol) fixed HeLa cells using PCK1 antibody (66862-1-Ig, Clone: 2F11B5 ) at dilution of 1:800 and CoraLite®488-Conjugated Goat Anti-Mouse IgG(H+L).



Immunohistochemical analysis of paraffin-embedded mouse kidney tissue slide using 66862-1-Ig (PCK1 antibody) at dilution of 1:400 (under 10x lens. Heat mediated antigen retrieval with Tris-EDTA buffer (pH 9.0).



Immunohistochemical analysis of paraffin-embedded mouse kidney tissue slide using 66862-1-Ig (PCK1 antibody) at dilution of 1:400 (under 40x lens. Heat mediated antigen retrieval with Tris-EDTA buffer (pH 9.0).