

CYLD Monoclonal antibody

Catalog Number: 66858-1-Ig

Basic Information

Catalog Number:

66858-1-Ig

Size:

1400 µg/ml

Source:

Mouse

Isotype:

IgG2a

Immunogen Catalog Number:

AG28333

GenBank Accession Number:

BC012342

GeneID (NCBI):

1540

UNIPROT ID:

Q9NQC7

Full Name:

cylindromatosis (turban tumor syndrome)

Calculated MW:

107 kDa

Observed MW:

110 kDa

Purification Method:

Protein A purification

CloneNo.:

1G2F4

Recommended Dilutions:

WB 1:1000-1:6000

IF/ICC 1:50-1:500

Applications

Tested Applications:

IF/ICC, WB, ELISA

Species Specificity:

Human, mouse, rat, pig, rabbit

Positive Controls:

WB : pig brain tissue, HEK-293 cells, A431 cells, rat brain tissue, mouse brain tissue, rabbit brain tissue

IF/ICC : SH-SY5Y cells,

Background Information

CYLD, also named as CYLD1, belongs to the peptidase C67 family. It is the protease that specifically cleaves 'Lys-63'-linked polyubiquitin chains. CYLD has endodeubiquitinase activity and plays an important role in the regulation of pathways leading to NF-kappa-B activation. CYLD contributes to the regulation of cell survival, proliferation and differentiation via its effects on NF-kappa-B activation. It is a negative regulator of Wnt signaling. CYLD inhibits HDAC6 and thereby promotes acetylation of alpha-tubulin and stabilization of microtubules. CYLD plays a role in the regulation of microtubule dynamics, and thereby contributes to the regulation of cell proliferation, cell polarization, cell migration, and angiogenesis. It is required for normal cell cycle progress and normal cytokinesis. CYLD inhibits nuclear translocation of NF-kappa-B and plays a role in the regulation of inflammation and the innate immune response, via its effects on NF-kappa-B activation. It is dispensable for the maturation of intrathymic natural killer cells, but required for the continued survival of immature natural killer cells. CYLD negatively regulates TNFRSF11A signaling and osteoclastogenesis.

Storage

Storage:

Store at -20°C. Stable for one year after shipment.

Storage Buffer:

PBS with 0.02% sodium azide and 50% glycerol pH 7.3.

Aliquoting is unnecessary for -20°C storage

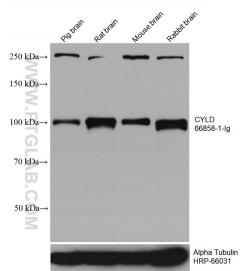
For technical support and original validation data for this product please contact:

T: 4006900926

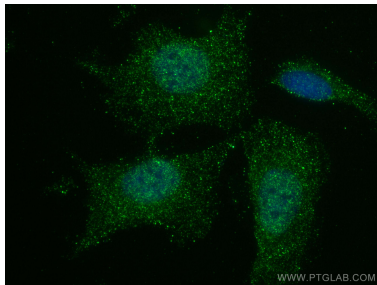
E: Proteintech-CN@ptglab.comW: ptgcn.com

This product is exclusively available under Proteintech Group brand and is not available to purchase from any other manufacturer.

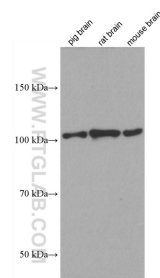
Selected Validation Data



Various lysates were subjected to SDS PAGE followed by western blot with 66858-1-Ig (CYLD antibody) at dilution of 1:3000 incubated at room temperature for 1.5 hours. The membrane was stripped and reblotted with HRP-conjugated Alpha Tubulin Monoclonal antibody (HRP-66031) as loading control.



Immunofluorescent analysis of (4% PFA) fixed SH-SY5Y cells using CYLD antibody (66858-1-Ig, Clone: 1G2F4) at dilution of 1:100 and CoraLite®488-Conjugated AffiniPure Goat Anti-Mouse IgG(H+L).



Various lysates were subjected to SDS PAGE followed by western blot with 66858-1-Ig (CYLD antibody) at dilution of 1:1500 incubated at room temperature for 1.5 hours.