

For Research Use Only

IL-6R alpha Monoclonal antibody

Catalog Number: 66855-1-Ig



Basic Information

| | | |
|---|--|--|
| Catalog Number: 66855-1-Ig | GenBank Accession Number: BC132684 | Purification Method: Protein G purification |
| Size: 1900 µg/ml | GeneID (NCBI): 3570 | CloneNo.: 2A5F4 |
| Source: Mouse | UNIPROT ID: P08887 | Recommended Dilutions: WB 1:1000-1:4000 IHC 1:200-1:800 |
| Isotype: IgG1 | Full Name: interleukin 6 receptor | |
| Immunogen Catalog Number: AG18263 | Calculated MW: 468 aa, 52 kDa | |
| | Observed MW: 80 kDa | |

Applications

Tested Applications:

IHC, WB, ELISA

Species Specificity:

Human

Note-IHC: suggested antigen retrieval with TE buffer pH 9.0; (*) Alternatively, antigen retrieval may be performed with citrate buffer pH 6.0

Positive Controls:

WB: human spleen tissue, Human peripheral blood leukocyte

IHC: human liver cancer tissue, human tonsillitis tissue

Background Information

Interleukin-6 (IL-6) is a pleiotropic cytokine produced by a variety of cells during infection, trauma, and immunological challenge (PMID: 8274730). IL-6 acts via a receptor complex consisting of two distinct membrane-bound glycoproteins, an 80-kDa IL-6-binding subunit (IL-6R alpha, CD126, gp80) and a 130-kDa signal-transducing element (gp130, CD130). After binding of IL-6 to membrane-bound IL-6R alpha, the complex of IL-6 and IL-6R alpha associates with gp130, thus activating the receptor (PMID: 9716487). Expression of gp130 is found in almost all organs while expression of IL-6R alpha is predominantly confined to hepatocytes and leukocyte subpopulations (monocytes, neutrophils, T cells, and B cells) (PMID: 11149892). Soluble form of IL-6R alpha has been found in human serum and urine (PMID: 2529343; 1545125).

Storage

Storage:

Store at -20°C. Stable for one year after shipment.

Storage Buffer:

PBS with 0.02% sodium azide and 50% glycerol pH 7.3.

Aliquoting is unnecessary for -20°C storage

For technical support and original validation data for this product please contact:

T: 4006900926

E: Proteintech-CN@ptglab.com

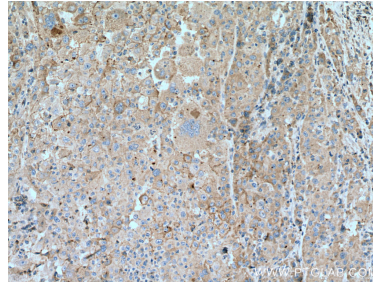
W: ptgcn.com

This product is exclusively available under Proteintech Group brand and is not available to purchase from any other manufacturer.

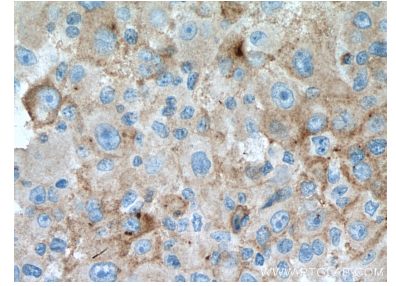
Selected Validation Data



human spleen tissue were subjected to SDS PAGE followed by western blot with 66855-1-Ig (IL6R alpha antibody) at dilution of 1:2000 incubated at room temperature for 1.5 hours.



Immunohistochemical analysis of paraffin-embedded human liver cancer tissue slide using 66855-1-Ig (IL6R alpha antibody) at dilution of 1:400 (under 10x lens). Heat mediated antigen retrieval with Tris-EDTA buffer (pH 9.0).



Immunohistochemical analysis of paraffin-embedded human liver cancer tissue slide using 66855-1-Ig (IL6R alpha antibody) at dilution of 1:400 (under 40x lens). Heat mediated antigen retrieval with Tris-EDTA buffer (pH 9.0).