

For Research Use Only

Phospho-RIPK1 (Ser161) Monoclonal antibody

Catalog Number: 66854-1-Ig

20 Publications



Basic Information

Catalog Number:

66854-1-Ig

Concentration:

1500 ug/ml

Source:

Mouse

Isotype:

IgG1

GenBank Accession Number:

NM_003804

GeneID (NCBI):

8737

UNIPROT ID:

Q13546

Full Name:

receptor (TNFRSF)-interacting serine-threonine kinase 1

Calculated MW:

76 kDa

Observed MW:

74 kDa, 45 kDa

Purification Method:

Protein G purification

CloneNo.:

1B2G1

Recommended Dilutions:

WB 1:2000- 1:20000

IHC 1:250-1:1000

IF/ICC 1:400-1:1600

Applications

Tested Applications:

WB, IHC, IF/ICC, FC (Intra), ELISA

Cited Applications:

WB, IHC, IF

Species Specificity:

human

Cited Species:

human, mouse, rat

Note-IHC: suggested antigen retrieval with TE buffer pH 9.0; (*) Alternatively, antigen retrieval may be performed with citrate buffer pH 6.0

Positive Controls:

WB : Jurkat cells, Calyculin A treated HEK-293T cells, Raji cells, THP-1 cells

IHC : human small intestine tissue, human heart tissue

IF/ICC : U2OS cells, Calyculin A treated HeLa cells

FC (Intra) : Calyculin A treated HEK-293T cells,

Background Information

RIPK1(Receptor-interacting serine/threonine-protein kinase 1) is primarily involved in mediating TNF-R1-induced cell activation, apoptosis and necroptosis and belongs to a novel class of kinases that function in cell survival and cell death mechanisms(PMID:22685397). It has 2 isoforms produced by alternative splicing. It also can exist as the protein with lower molecular weight about 25kd and 45kd in HAEC and HUVEC(PMID:22685397).

Notable Publications

Author	Pubmed ID	Journal	Application
Ye Wang	36505813	Front Oncol	WB
Chia-Kang Ho	35322540	J Cell Mol Med	WB
Yongchang Yang	35308164	Front Genet	WB

Storage

Storage:

Store at -20°C. Stable for one year after shipment.

Storage Buffer:

PBS with 0.02% sodium azide and 50% glycerol, pH7.3

Aliquoting is unnecessary for -20°C storage

For technical support and original validation data for this product please contact:

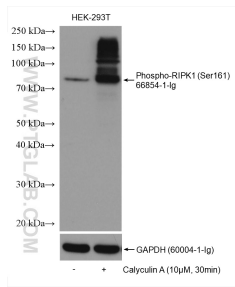
T: 4006900926

E: Proteintech-CN@ptglab.com

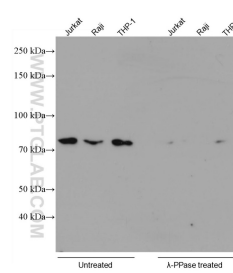
W: ptgcn.com

This product is exclusively available under Proteintech Group brand and is not available to purchase from any other manufacturer.

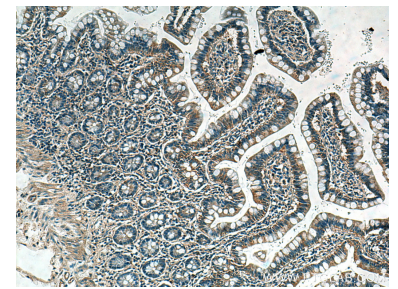
Selected Validation Data



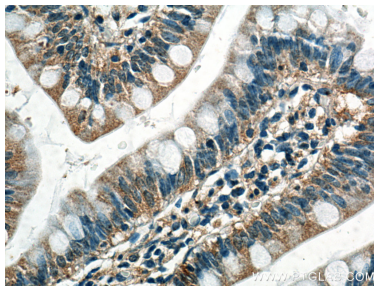
Non-treated HEK-293T and Calyculin A treated HEK-293T cells were subjected to SDS PAGE followed by western blot with 66854-1-Ig (Phospho-RIPK1 (Ser161) antibody) at dilution of 1:5000 incubated at room temperature for 1.5 hours. The membrane was stripped and re-blotted with GAPDH antibody as loading control.



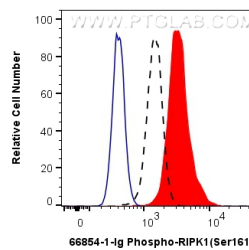
Various lysates were subjected to SDS PAGE followed by western blot with 66854-1-Ig (Phospho-RIPK1 (Ser161) antibody) at dilution of 1:5000 incubated at room temperature for 1.5 hours. The membrane was untreated (left) or treated with Lambda Protein Phosphatase (λ -PPase, 500U, right) at 37°C for 1 hours before blocking.



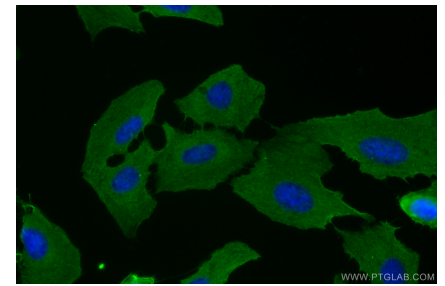
Immunohistochemical analysis of paraffin-embedded human small intestine tissue slide using 66854-1-Ig (RIPK1 phospho S161 antibody) at dilution of 1:500 (under 10x lens). Heat mediated antigen retrieval with Tris-EDTA buffer (pH 9.0).



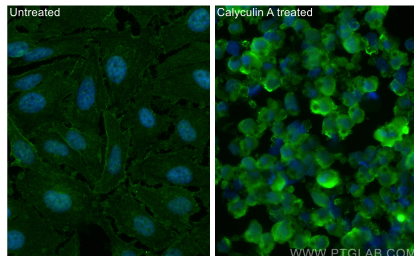
Immunohistochemical analysis of paraffin-embedded human small intestine tissue slide using 66854-1-Ig (RIPK1 phospho S161 antibody) at dilution of 1:500 (under 40x lens). Heat mediated antigen retrieval with Tris-EDTA buffer (pH 9.0).



1X10⁶ Calyculin A treated HEK-293T cells were intracellularly stained with 0.13 ug Anti-Human Phospho-RIPK1 (Ser161) (66854-1-Ig, Clone:1B2G1) labeled with FlexAble Coralite® Plus 555 Antibody Labeling Kit for Mouse IgG1 (KFA022). Cells were fixed with 4% PFA and permeabilized with 90% MeOH.



Immunofluorescent analysis of (-20°C Ethanol) fixed U2OS cells using Phospho-RIPK1 (Ser161) antibody (66854-1-Ig, Clone: 1B2G1) at dilution of 1:800 and Coralite®488-Conjugated AffiniPure Goat Anti-Mouse IgG(H+L) (SA00013-1).



Immunofluorescent analysis of (4% PFA) fixed Calyculin A treated HeLa cells using Phospho-RIPK1 (Ser161) antibody (66854-1-Ig, Clone: 1B2G1) at dilution of 1:400 and Multi-rAb Coralite® Plus 488-Goat Anti-Mouse Recombinant Secondary Antibody (H+L) (RGAM002).