

For Research Use Only

SMO Monoclonal antibody

Catalog Number: 66851-2-Ig



Basic Information

Catalog Number: 66851-2-Ig	GenBank Accession Number: BC009989	Purification Method: Protein G purification
Size: 1000 µg/ml	GeneID (NCBI): 6608	CloneNo.: 2A11A10
Source: Mouse	UNIPROT ID: Q99835	Recommended Dilutions: IF 1:400-1:1600
Isotype: IgG1	Full Name: smoothened homolog (Drosophila)	
Immunogen Catalog Number: AG25861	Calculated MW: 787 aa, 86 kDa	

Applications

Tested Applications: IF/ICC, ELISA	Positive Controls: IF : MDCK cells,
Species Specificity: Human, Canine	

Background Information

Smoothened (SMO) is a G protein-coupled receptor that is a component of the hedgehog (Hh) signaling pathway and is conserved from flies to humans. The Hh pathway plays central roles in animal development and stem-cell function. Defects in Hh signalling lead to birth defects and cancer in humans. Expressed on the primary cilium, SMO interacts with the patched protein, a receptor for Hh proteins.

Storage

Storage:
Store at -20°C. Stable for one year after shipment.
Storage Buffer:
PBS with 0.02% sodium azide and 50% glycerol pH 7.3.
Aliquoting is unnecessary for -20°C storage

For technical support and original validation data for this product please contact:

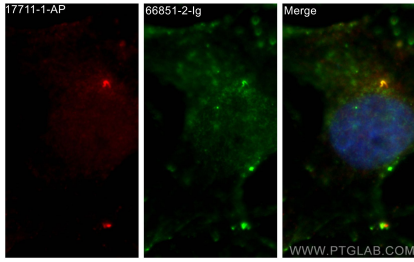
T: 4006900926

E: Proteintech-CN@ptglab.com

W: ptgcn.com

This product is exclusively available under Proteintech Group brand and is not available to purchase from any other manufacturer.

Selected Validation Data



Immunofluorescent analysis of (4% PFA) fixed MDCK cells using SMO antibody (66851-2-Ig, Clone: 2A11A10) at dilution of 1:800 and CoraLite®488-Conjugated AffiniPure Goat Anti-Mouse IgG(H+L), ARL13B antibody (17711-1-AP, red).