

For Research Use Only

SMO Monoclonal antibody

Catalog Number: 66851-1-Ig **24 Publications**



Basic Information

Catalog Number: 66851-1-Ig	GenBank Accession Number: BC009989	Purification Method: Protein A purification
Size: 2000 µg/ml	GeneID (NCBI): 6608	CloneNo.: 2B10A11
Source: Mouse	UNIPROT ID: Q99835	Recommended Dilutions: WB 1:1000-1:8000 IHC 1:1000-1:4000 IF/ICC 1:50-1:500
Isotype: IgG2b	Full Name: smoothened homolog (Drosophila)	
Immunogen Catalog Number: AG25861	Calculated MW: 787 aa, 86 kDa	
	Observed MW: 86 kDa	

Applications

Tested Applications: IF/ICC, IHC, WB, ELISA	Positive Controls: WB : rat brain tissue, mouse brain tissue
Cited Applications: WB, IHC, IF	IHC : human prostate cancer tissue,
Species Specificity: Human, Canine, Mouse, Rat	IF/ICC : MDCK cells,
Cited Species: human, mouse, rat	
Note-IHC: suggested antigen retrieval with TE buffer pH 9.0; (*) Alternatively, antigen retrieval may be performed with citrate buffer pH 6.0	

Background Information

Smoothened (SMO) is a G protein-coupled receptor that is a component of the hedgehog (Hh) signaling pathway and is conserved from flies to humans. The Hh pathway plays central roles in animal development and stem-cell function. Defects in Hh signalling lead to birth defects and cancer in humans. Expressed on the primary cilium, SMO interacts with the patched protein, a receptor for Hh proteins.

Notable Publications

Author	Pubmed ID	Journal	Application
Mengjie Li	34592340	J Ethnopharmacol	WB
Ana Martin-Hurtado	31554934	Sci Rep	WB
Jiawei Li	34746145	Front Cell Dev Biol	WB

Storage

Storage:
Store at -20°C. Stable for one year after shipment.
Storage Buffer:
PBS with 0.02% sodium azide and 50% glycerol pH 7.3.
Aliquoting is unnecessary for -20°C storage

For technical support and original validation data for this product please contact:

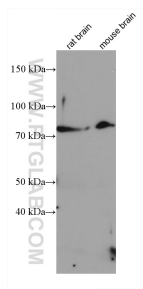
T: 4006900926

E: Proteintech-CN@ptglab.com

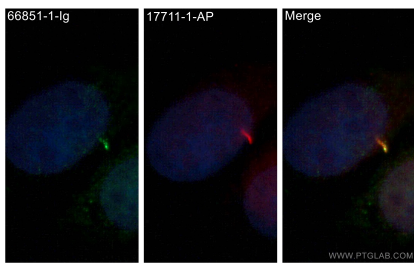
W: ptgcn.com

This product is exclusively available under Proteintech Group brand and is not available to purchase from any other manufacturer.

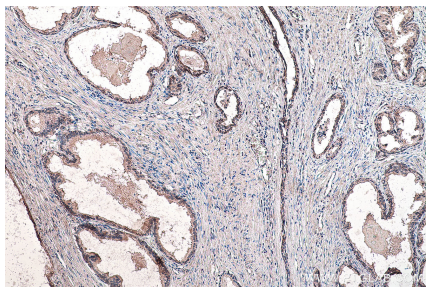
Selected Validation Data



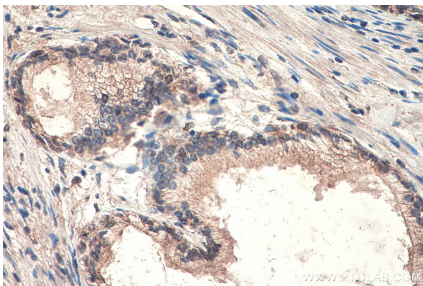
Various lysates were subjected to SDS PAGE followed by western blot with 66851-1-Ig (SMO antibody) at dilution of 1:4000 incubated at room temperature for 1.5 hours.



Immunofluorescent analysis of (4% PFA) fixed MDCK cells using 66851-1-Ig (SMO antibody) at dilution of 1:100 and Alexa Fluor 488-Conjugated Goat Anti-Mouse IgG(H+L).



Immunohistochemical analysis of paraffin-embedded human prostate cancer tissue slide using 66851-1-Ig (SMO antibody) at dilution of 1:2000 (under 10x lens). Heat mediated antigen retrieval with Tris-EDTA buffer (pH 9.0).



Immunohistochemical analysis of paraffin-embedded human prostate cancer tissue slide using 66851-1-Ig (SMO antibody) at dilution of 1:2000 (under 40x lens). Heat mediated antigen retrieval with Tris-EDTA buffer (pH 9.0).