

For Research Use Only

# KLF5 Monoclonal antibody

Catalog Number: 66850-1-Ig

Featured Product

4 Publications



## Basic Information

Catalog Number:

66850-1-Ig

Size:

1800 µg/ml

Source:

Mouse

Isotype:

IgG1

Immunogen Catalog Number:

AG15403

GenBank Accession Number:

BC042131

GeneID (NCBI):

688

UNIPROT ID:

Q13887

Full Name:

Kruppel-like factor 5 (intestinal)

Calculated MW:

457 aa, 51 kDa

Observed MW:

51-57 kDa

Purification Method:

Protein G purification

CloneNo.:

2C11C5

Recommended Dilutions:

WB 1:2000-1:10000

## Applications

Tested Applications:

WB, FC (Intra), ELISA

Cited Applications:

WB, IHC

Species Specificity:

human, mouse

Cited Species:

human

Positive Controls:

WB : HeLa cells, A549 cells, NCI-H1299 cells

## Background Information

KLF5, also known as BTEB2 and IKLF, is a member of the Krueppel-like transcription factor family. It is a transcription factor for SMemb/non-muscle myosin heavy chain-B (NMHC-B). It is a molecular marker of phenotypically modulated smooth-muscle cells. KLF5 seems to be a key element linking external stress and cardiovascular remodeling.

## Notable Publications

Author	Pubmed ID	Journal	Application
Mei Li	38815798	Cancer Lett	WB
Yongling Kuang	38609873	BMC Nephrol	WB
Juan Li	38468288	Breast Cancer Res	WB

## Storage

Storage:

Store at -20°C. Stable for one year after shipment.

Storage Buffer:

PBS with 0.02% sodium azide and 50% glycerol pH 7.3.

Aliquoting is unnecessary for -20°C storage

For technical support and original validation data for this product please contact:

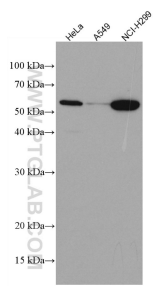
T: 4006900926

E: Proteintech-CN@ptglab.com

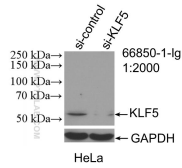
W: ptgcn.com

This product is exclusively available under Proteintech Group brand and is not available to purchase from any other manufacturer.

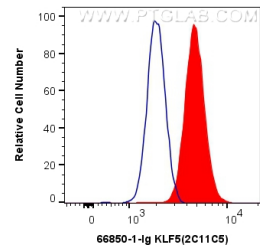
Selected Validation Data



Various lysates were subjected to SDS PAGE followed by western blot with 66850-1-Ig (KLF5 antibody) at dilution of 1:2000 incubated at room temperature for 1.5 hours.



WB result of KLF5 antibody (66850-1-Ig; 1:2000; incubated at room temperature for 1.5 hours) with sh-Control and sh-KLF5 transfected HeLa cells.



1X10<sup>6</sup> HeLa cells were intracellularly stained with 0.5 ug Anti-Human KLF5 (66850-1-Ig, Clone:2C11C5) (red) labeled with FlexAble CoraLite® Plus 555 Antibody Labeling Kit for Mouse IgG1 (KFA022), or 0.5 ug Control Antibody. Cells were fixed and permeabilized with Transcription Factor Staining Buffer Kit (PF00011).