

For Research Use Only

GLUT4 Monoclonal antibody, PBS Only

Catalog Number: 66846-1-PBS



Basic Information

Catalog Number: 66846-1-PBS	GenBank Accession Number: BC069615	Purification Method: Protein A purification
Concentration: 1mg/ml	GeneID (NCBI): 6517	CloneNo.: 3G7C9
Source: Mouse	UNIPROT ID: P14672	
Isotype: IgG2b	Full Name: solute carrier family 2 (facilitated glucose transporter), member 4	
Immunogen Catalog Number: AG15390	Calculated MW: 509 aa, 55 kDa	
	Observed MW: 48-50 kDa	

Applications

Tested Applications:
WB, IHC, IF/ICC, IF-P, FC (Intra), Indirect ELISA

Species Specificity:
human, mouse, rat, pig

Background Information

GLUT4 is a member of GLUT family of transmembrane hexose transporters. It is an INS receptor that mediates INS-stimulated glucose transport in fat and muscle where it is predominantly expressed. In response to INS stimulation, GLUT4 experienced translocation from trans-Golgi network to plasma membrane. The impairment of GLUT4 translocation is associated with diabetes.

Storage

Storage:
Store at -80°C.

The product is shipped with ice packs. Upon receipt, store it immediately at -80°C

Storage Buffer:
PBS Only

For technical support and original validation data for this product please contact:

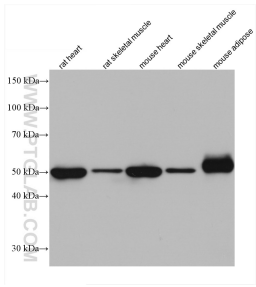
T: 4006900926

E: Proteintech-CN@ptglab.com

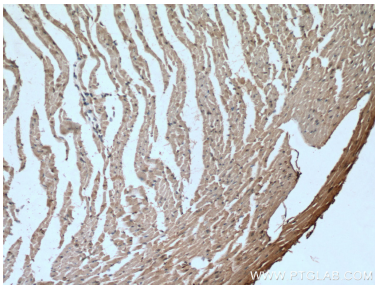
W: ptgcn.com

This product is exclusively available under Proteintech Group brand and is not available to purchase from any other manufacturer.

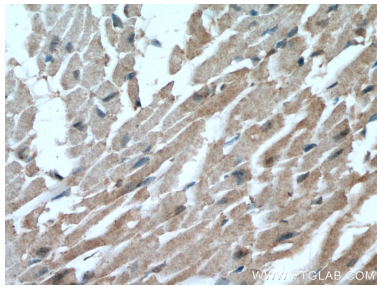
Selected Validation Data



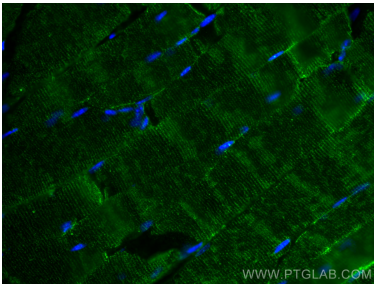
Various lysates were subjected to SDS PAGE followed by western blot with 66846-1-Ig (GLUT4 antibody) at dilution of 1:3000 incubated at room temperature for 1.5 hours. This data was developed using the same antibody clone with 66846-1-PBS in a different storage buffer formulation.



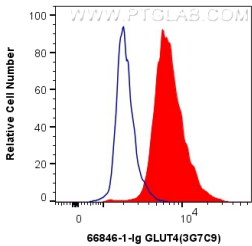
Immunohistochemical analysis of paraffin-embedded mouse heart tissue slide using 66846-1-Ig (GLUT4 antibody) at dilution of 1:200 (under 10x lens). Heat mediated antigen retrieval with Tris-EDTA buffer (pH 9.0). This data was developed using the same antibody clone with 66846-1-PBS in a different storage buffer formulation.



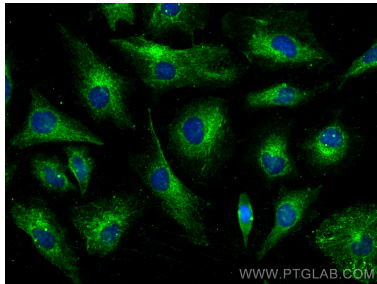
Immunohistochemical analysis of paraffin-embedded mouse heart tissue slide using 66846-1-Ig (GLUT4 antibody) at dilution of 1:200 (under 40x lens). Heat mediated antigen retrieval with Tris-EDTA buffer (pH 9.0). This data was developed using the same antibody clone with 66846-1-PBS in a different storage buffer formulation.



Immunofluorescent analysis of (4% PFA) fixed mouse skeletal muscle tissue using GLUT4 antibody (66846-1-Ig, Clone: 3G7C9) at dilution of 1:400 and CoraLite®488-Conjugated AffiniPure Goat Anti-Mouse IgG(H+L). This data was developed using the same antibody clone with 66846-1-PBS in a different storage buffer formulation.



1X10⁶ HEK-293 cells were intracellularly stained with 0.4 ug Anti-Human GLUT4 (66846-1-Ig, Clone:3G7C9) and CoraLite®488-Conjugated AffiniPure Goat Anti-Mouse IgG(H+L) at dilution 1:1000 (red), or 0.4 ug Mouse IgG2b Isotype Control (66360-3-Ig, Clone: K11B8C4B5) (blue). Cells were fixed with 4% PFA and permeabilized with Flow Cytometry Perm Buffer (PF00011-C). This data was developed using the same antibody clone with 66846-1-PBS in a different storage buffer



Immunofluorescent analysis of (-20°C Ethanol) fixed HeLa cells using GLUT4 antibody (66846-1-Ig, Clone: 3G7C9) at dilution of 1:400 and CoraLite®488-Conjugated Goat Anti-Mouse IgG(H+L) (SA00013-1). This data was developed using the same antibody clone with 66846-1-PBS in a different storage buffer formulation.