

For Research Use Only

YY2 Monoclonal antibody

Catalog Number: 66839-1-Ig 1 Publications



Basic Information

Catalog Number: 66839-1-Ig	GenBank Accession Number: BC137217	Purification Method: Protein A purification
Size: 1600 µg/ml	GeneID (NCBI): 404281	CloneNo.: 1C11A7
Source: Mouse	UNIPROT ID: O15391	Recommended Dilutions: WB 1:1000-1:4000
Isotype: IgG1	Full Name: YY2 transcription factor	
Immunogen Catalog Number: AG25373	Calculated MW: 372 aa, 46 kDa	
	Observed MW: 46 kDa	

Applications

Tested Applications: WB, ELISA	Positive Controls: WB : human kidney tissue, human placenta tissue, MCF-7 cells
Cited Applications: WB	
Species Specificity: Human	
Cited Species: human	

Background Information

YY2 (Yin-Yang 2) encodes a zinc finger transcription factor similarity to the well-characterized YY1 that locating to nucleus. Both proteins recognize an identical DNA-binding motifs with a high homologous Zinc Finger region, and these transcription factors can act as activators or repressors when bound to DNA (PMID:26350623). It is reported that YY2 is placental mammal-specific and is absent in marsupial and non-mammalian vertebrate species (PMID:16377127). YYs are play an important role in multiple developmental processes , such as implantation, cell differentiation, X inactivation, imprinting and organogenesis (PMID:27191592). YY2 is expressed in kindey, liver, spleen and testicle but not in the colon (PMID:15087442). A 41kDa band could be detected.

Notable Publications

Author	Pubmed ID	Journal	Application
Yunshang Chen	35115490	Cell Death Dis	WB

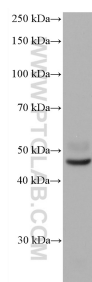
Storage

Storage:
Store at -20°C. Stable for one year after shipment.
Storage Buffer:
PBS with 0.02% sodium azide and 50% glycerol pH 7.3.
Aliquoting is unnecessary for -20°C storage

For technical support and original validation data for this product please contact:
T: 4006900926 E: Proteintech-CN@ptglab.com W: ptgcn.com

This product is exclusively available under Proteintech Group brand and is not available to purchase from any other manufacturer.

Selected Validation Data



human kidney tissue were subjected to SDS PAGE followed by western blot with 66839-1-Ig (YY2 antibody) at dilution of 1:2000 incubated at room temperature for 1.5 hours.