

For Research Use Only

# IRF5 Monoclonal antibody

Catalog Number: 66835-1-Ig



## Basic Information

<b>Catalog Number:</b> 66835-1-Ig	<b>GenBank Accession Number:</b> BC004201	<b>Purification Method:</b> Protein G purification
<b>Size:</b> 1300 µg/ml	<b>GeneID (NCBI):</b> 3663	<b>CloneNo.:</b> 3A4A10
<b>Source:</b> Mouse	<b>Full Name:</b> interferon regulatory factor 5	<b>Recommended Dilutions:</b> WB 1:1000-1:6000
<b>Isotype:</b> IgG1	<b>Calculated MW:</b> 56 kDa	
<b>Immunogen Catalog Number:</b> AG5442	<b>Observed MW:</b> 56 kDa	

## Applications

<b>Tested Applications:</b> WB, ELISA	<b>Positive Controls:</b> WB: A549 cells, HeLa cells, THP-1 cells, RAW 264.7 cells
<b>Species Specificity:</b> Human, mouse	

## Background Information

IRF5, also named as SLEB10, contains one IRF tryptophan pentad repeat DNA-binding domain and belongs to the IRF family. It is a transcription factor involved in the induction of interferons IFNA and INFB and inflammatory cytokines upon virus infection. It is activated by TLR7 or TLR8 signaling. Genetic variations in IRF5 are associated with susceptibility to inflammatory bowel disease type 14 (IBD14) and systemic lupus erythematosus type 10 (SLEB10). IRF5 is also used as M1 macrophage lineage marker. Alternative splice variant encoding different isoforms exist.

## Storage

**Storage:**  
Store at -20°C. Stable for one year after shipment.  
**Storage Buffer:**  
PBS with 0.02% sodium azide and 50% glycerol pH 7.3.  
Aliquoting is unnecessary for -20°C storage

For technical support and original validation data for this product please contact:

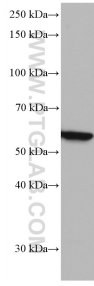
T: 4006900926

E: [Proteintech-CN@ptglab.com](mailto:Proteintech-CN@ptglab.com)

W: [ptgcn.com](http://ptgcn.com)

**This product is exclusively available under Proteintech Group brand and is not available to purchase from any other manufacturer.**

## Selected Validation Data



A549 cells were subjected to SDS PAGE followed by western blot with 66835-1-Ig (IRF5 antibody) at dilution of 1:3000 incubated at room temperature for 1.5 hours.