

ASGR2 Monoclonal antibody

Catalog Number: 66831-1-Ig

Basic Information

Catalog Number:

66831-1-Ig

Size:

2900 µg/ml

Source:

Mouse

Isotype:

IgG2a

Immunogen Catalog Number:

AG2037

GenBank Accession Number:

BC017251

GeneID (NCBI):

433

UNIPROT ID:

P07307

Full Name:

asialoglycoprotein receptor 2

Calculated MW:

39 kDa

Observed MW:

36 kDa

Purification Method:

Protein A purification

CloneNo.:

2A5C12

Recommended Dilutions:

WB 1:1000-1:3000

Applications

Tested Applications:

WB, ELISA

Species Specificity:

Human, rat

Positive Controls:

WB : SMMC-7721 cells, HSC-T6 cells

Background Information

Asialoglycoprotein receptor (ASGPR), also known as the hepatic galactose/N-acetylglucosamine (GlcNAc) receptor or Ashwell receptor, is a C-type lectin expressed exclusively in hepatic parenchymal cells. ASGPR consists of two subunits, a major subunit (ASGR1, HL-1) and a minor subunit (ASGR2, HL-2), and specifically recognizes terminal β -linked galactose or GlcNAc on circulating glycoproteins or cells. This receptor plays a critical role in serum glycoprotein homeostasis by mediating the endocytosis and lysosomal degradation of glycoproteins that contain terminal galactose or GlcNAc residues. ASGPR may facilitate hepatic infection by multiple viruses including hepatitis B, and is also a target for liver-specific drug delivery.

Storage

Storage:

Store at -20°C. Stable for one year after shipment.

Storage Buffer:

PBS with 0.02% sodium azide and 50% glycerol pH 7.3.

Aliquoting is unnecessary for -20°C storage

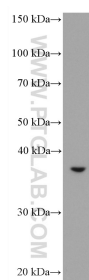
For technical support and original validation data for this product please contact:

T: 4006900926

E: Proteintech-CN@ptglab.comW: ptgcn.com

This product is exclusively available under Proteintech Group brand and is not available to purchase from any other manufacturer.

Selected Validation Data



SMMC-7721 cells were subjected to SDS PAGE followed by western blot with 66831-1-Ig (ASGR2 antibody) at dilution of 1:2500 incubated at room temperature for 1.5 hours.