

For Research Use Only

COL6A1 Monoclonal antibody, PBS Only

Catalog Number: 66824-1-PBS



Basic Information

Catalog Number:

66824-1-PBS

Concentration:

1 mg/ml

Source:

Mouse

Isotype:

IgG2a

Immunogen Catalog Number:

AG11809

GenBank Accession Number:

BC052575

GeneID (NCBI):

1291

UNIPROT ID:

P12109

Full Name:

collagen, type VI, alpha 1

Calculated MW:

1028 aa, 109 kDa

Observed MW:

140-150 kDa

Purification Method:

Protein A purification

CloneNo.:

3H10B1

Applications

Tested Applications:

WB, IHC, IF-P, ELISA

Species Specificity:

human

Background Information

Type VI Collagen is a major structural component of microfibrils. Type VI Collagen was found to be present throughout the connective tissue and in the extracellular matrix of cultured fibroblasts (PMID: 6723253). It is a heterotrimer composed of three different chains: alpha-1(VI), alpha-2(VI), and alpha-3(VI) or alpha-5(VI) or alpha-6(VI). The alpha-1(VI) chain is encoded by COL6A1 gene. Mutations in this gene result in Bethlem myopathy and Ullrich congenital muscular dystrophy.

Storage

Storage:

Store at -80°C.

The product is shipped with ice packs. Upon receipt, store it immediately at -80°C

Storage Buffer:

PBS only

For technical support and original validation data for this product please contact:

T: 4006900926

E: Proteintech-CN@ptglab.com

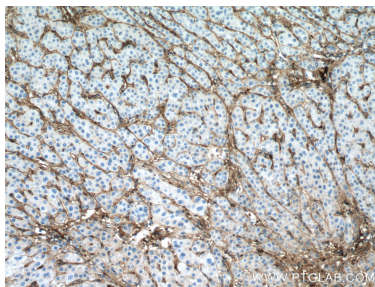
W: ptgcn.com

This product is exclusively available under Proteintech Group brand and is not available to purchase from any other manufacturer.

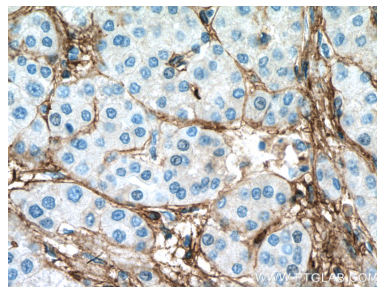
Selected Validation Data



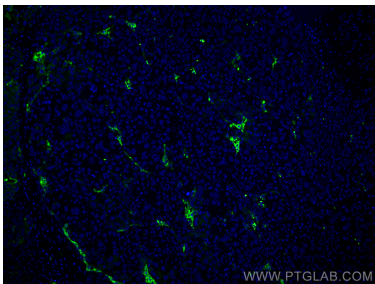
human skeletal muscle tissue were subjected to SDS PAGE followed by western blot with 66824-1-Ig (Collagen Type VI antibody) at dilution of 1:3000 incubated at room temperature for 1.5 hours. This data was developed using the same antibody clone with 66824-1-PBS in a different storage buffer formulation.



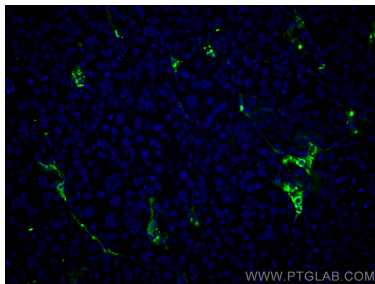
Immunohistochemical analysis of paraffin-embedded human liver cancer tissue slide using 66824-1-Ig (Collagen Type VI antibody) at dilution of 1:2000 (under 10x lens. Heat mediated antigen retrieval with Tris-EDTA buffer (pH 9.0). This data was developed using the same antibody clone with 66824-1-PBS in a different storage buffer formulation.



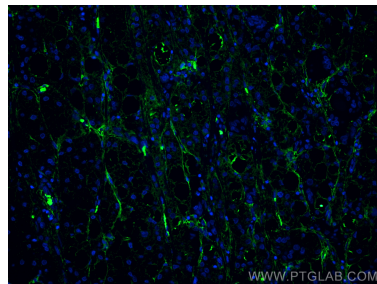
Immunohistochemical analysis of paraffin-embedded human liver cancer tissue slide using 66824-1-Ig (Collagen Type VI antibody) at dilution of 1:2000 (under 40x lens. Heat mediated antigen retrieval with Tris-EDTA buffer (pH 9.0). This data was developed using the same antibody clone with 66824-1-PBS in a different storage buffer formulation.



Immunofluorescent analysis of (4% PFA) fixed human liver cancer tissue using Collagen Type VI antibody (66824-1-Ig, Clone: 3H10B1) at dilution of 1:400 and CoraLite®488-Conjugated AffiniPure Goat Anti-Mouse IgG(H+L). This data was developed using the same antibody clone with 66824-1-PBS in a different storage buffer formulation.



Immunofluorescent analysis of (4% PFA) fixed human liver cancer tissue using Collagen Type VI antibody (66824-1-Ig, Clone: 3H10B1) at dilution of 1:400 and CoraLite®488-Conjugated AffiniPure Goat Anti-Mouse IgG(H+L). This data was developed using the same antibody clone with 66824-1-PBS in a different storage buffer formulation.



Immunofluorescent analysis of (4% PFA) fixed human liver cancer tissue using Collagen Type VI antibody (66824-1-Ig, Clone: 3H10B1) at dilution of 1:400 and CoraLite®488-Conjugated AffiniPure Goat Anti-Mouse IgG(H+L). This data was developed using the same antibody clone with 66824-1-PBS in a different storage buffer formulation.