

COL6A1 Monoclonal antibody

Catalog Number: 66824-1-Ig

Basic Information

| | | |
|---|---|--|
| Catalog Number: 66824-1-Ig | GenBank Accession Number: BC052575 | Purification Method: Protein A purification |
| Concentration: 1400 ug/ml | GeneID (NCBI): 1291 | CloneNo.: 3H10B1 |
| Source: Mouse | UNIPROT ID: P12109 | Recommended Dilutions: WB 1:1000-1:6000 IHC 1:1000-1:4000 IF-P 1:200-1:800 |
| Isotype: IgG2a | Full Name: collagen, type VI, alpha 1 | |
| Immunogen Catalog Number: AG11809 | Calculated MW: 1028 aa, 109 kDa Observed MW: 140-150 kDa | |

Applications

Tested Applications:

WB, IHC, IF-P, ELISA

Species Specificity:

human

Note-IHC: suggested antigen retrieval with TE buffer pH 9.0; (*) Alternatively, antigen retrieval may be performed with citrate buffer pH 6.0

Positive Controls:

WB : human skeletal muscle tissue, human heart tissue

IHC : human liver cancer tissue, human colon cancer tissue

IF-P : human liver cancer tissue,

Background Information

Type VI Collagen is a major structural component of microfibrils. Type VI Collagen was found to be present throughout the connective tissue and in the extracellular matrix of cultured fibroblasts (PMID: 6723253). It is a heterotrimer composed of three different chains: alpha-1(VI), alpha-2(VI), and alpha-3(VI) or alpha-5(VI) or alpha-6(VI). The alpha-1(VI) chain is encoded by COL6A1 gene. Mutations in this gene result in Bethlem myopathy and Ullrich congenital muscular dystrophy.

Storage

Storage:

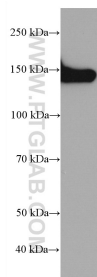
Store at -20°C. Stable for one year after shipment.

Storage Buffer:

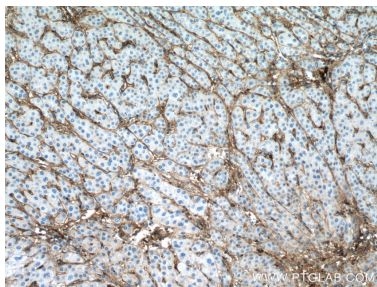
PBS with 0.02% sodium azide and 50% glycerol

Aliquoting is unnecessary for -20°C storage

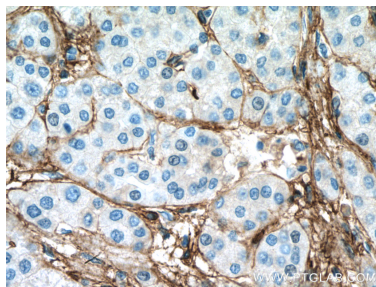
Selected Validation Data



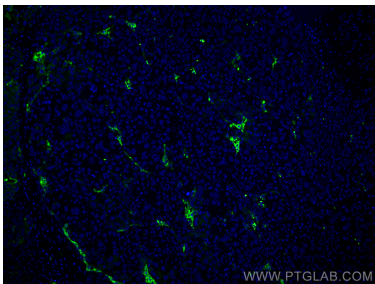
human skeletal muscle tissue were subjected to SDS PAGE followed by western blot with 66824-1-Ig (Collagen Type VI antibody) at dilution of 1:3000 incubated at room temperature for 1.5 hours.



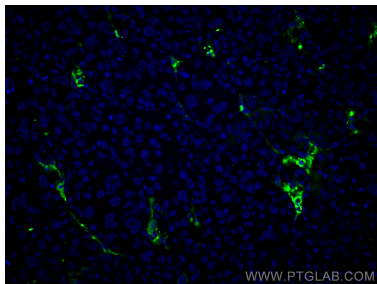
Immunohistochemical analysis of paraffin-embedded human liver cancer tissue slide using 66824-1-Ig (Collagen Type VI antibody) at dilution of 1:2000 (under 10x lens. Heat mediated antigen retrieval with Tris-EDTA buffer (pH 9.0).



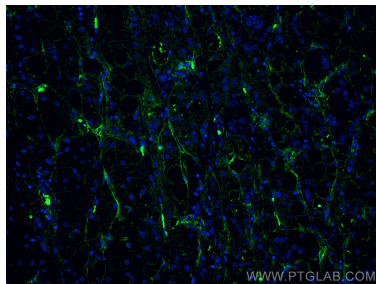
Immunohistochemical analysis of paraffin-embedded human liver cancer tissue slide using 66824-1-Ig (Collagen Type VI antibody) at dilution of 1:2000 (under 40x lens. Heat mediated antigen retrieval with Tris-EDTA buffer (pH 9.0).



Immunofluorescent analysis of (4% PFA) fixed human liver cancer tissue using Collagen Type VI antibody (66824-1-Ig, Clone: 3H10B1) at dilution of 1:400 and CoraLite®488-Conjugated AffiniPure Goat Anti-Mouse IgG(H+L).



Immunofluorescent analysis of (4% PFA) fixed human liver cancer tissue using Collagen Type VI antibody (66824-1-Ig, Clone: 3H10B1) at dilution of 1:400 and CoraLite®488-Conjugated AffiniPure Goat Anti-Mouse IgG(H+L).



Immunofluorescent analysis of (4% PFA) fixed human liver cancer tissue using Collagen Type VI antibody (66824-1-Ig, Clone: 3H10B1) at dilution of 1:400 and CoraLite®488-Conjugated AffiniPure Goat Anti-Mouse IgG(H+L).