

For Research Use Only

# ESRRB Monoclonal antibody

Catalog Number: 66818-1-Ig **1 Publications**



## Basic Information

<b>Catalog Number:</b> 66818-1-Ig	<b>GenBank Accession Number:</b> BC131517	<b>Purification Method:</b> Protein A purification
<b>Size:</b> 1700 ug/ml	<b>GeneID (NCBI):</b> 2103	<b>CloneNo.:</b> 3E10C1
<b>Source:</b> Mouse	<b>UNIPROT ID:</b> O95718	<b>Recommended Dilutions:</b> WB 1:1000-1:4000 IHC 1:1000-1:4000 IF/ICC 1:400-1:1600
<b>Isotype:</b> IgG1	<b>Full Name:</b> estrogen-related receptor beta	
<b>Immunogen Catalog Number:</b> AG18626	<b>Calculated MW:</b> 508 aa, 56 kDa	
	<b>Observed MW:</b> 47 kDa	

## Applications

<b>Tested Applications:</b> WB, IHC, IF/ICC, ELISA	<b>Positive Controls:</b> WB : HEK-293 cells, HeLa cells, NCCIT cells, JAR cells, A549 cells, Caco-2 cells, LNCaP cells, HT-29 cells, Rat brain tissue, Mouse brain tissue
<b>Cited Applications:</b> IF	<b>IHC :</b> human prostate cancer tissue,
<b>Species Specificity:</b> human, mouse, rat	<b>IF/ICC :</b> Caco-2 cells,
<b>Cited Species:</b> human	
<b>Note-IHC: suggested antigen retrieval with TE buffer pH 9.0; (*) Alternatively, antigen retrieval may be performed with citrate buffer pH 6.0</b>	

## Background Information

Estrogen related receptor beta (ESRRB), a NR3 Steroid Receptor, has been shown to affect early placental development. Also it can act as a repressor of transcriptional activity mediated by the glucocorticoid receptor (GR). It binds as a monomer to the extended half-site TNAAGTGCA and as a homodimer to the estrogen response element (ERE), palindromic thyroid hormone response element (TRE(pal)), and SF-1 response element, but not to the glucocorticoid response element (GRE). Estrogen related receptor beta mutations lead to abnormal development of the chorion and defective diploid trophoblast proliferation, and are lethal during midgestation. Expression has been documented in mice in the extra embryonic ectoderm that gives rise to the chorion. ESTs have been isolated from normal human eye, lung, and testis libraries. The ligand for the receptor is PPARgamma coactivator 1 (PGC-1) beta. ESRRB exists various isoforms and molecular weight of each isoform is 48 kDa, 55 kDa and 56 kDa.

## Notable Publications

Author	Pubmed ID	Journal	Application
Bo Wang	34749018	Stem Cell Res	IF

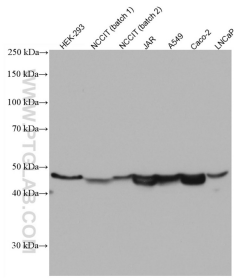
## Storage

**Storage:**  
Store at -20°C. Stable for one year after shipment.  
**Storage Buffer:**  
PBS with 0.02% sodium azide and 50% glycerol pH 7.3.  
Aliquoting is unnecessary for -20°C storage

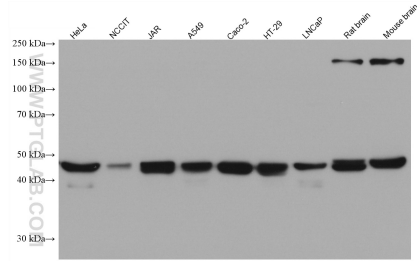
For technical support and original validation data for this product please contact:  
T: 4006900926 E: Proteintech-CN@ptglab.com W: ptgcn.com

**This product is exclusively available under Proteintech Group brand and is not available to purchase from any other manufacturer.**

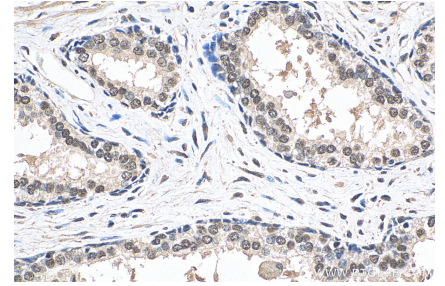
## Selected Validation Data



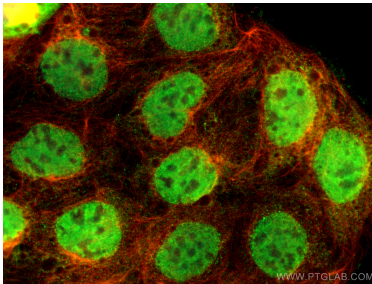
Various lysates were subjected to SDS PAGE followed by western blot with 66818-1-Ig (ESRRB antibody) at dilution of 1:2000 incubated at room temperature for 1.5 hours.



Various lysates were subjected to SDS PAGE followed by western blot with 66818-1-Ig (ESRRB antibody) at dilution of 1:40000 incubated at room temperature for 1.5 hours.



Immunohistochemical analysis of paraffin-embedded human prostate cancer tissue slide using 66818-1-Ig (ESRRB antibody) at dilution of 1:2000 (under 10x lens). Heat mediated antigen retrieval with Tris-EDTA buffer (pH 9.0).



Immunofluorescent analysis of (4% PFA) fixed Caco-2 cells using ESRRB antibody (66818-1-Ig, Clone: 3E10C1) at dilution of 1:800 and CoraLite®488-Conjugated AffiniPure Goat Anti-Mouse IgG(H+L) (SA00013-1), Alpha Tubulin antibody (80762-1-RR, Clone: 1G7, red).