

CCR6 Monoclonal antibody, PBS Only

Catalog Number: 66801-1-PBS

Basic Information

Catalog Number:	GenBank Accession Number:	Purification Method:
66801-1-PBS	BC037960	Protein A purification
Size:	GeneID (NCBI):	CloneNo.:
1 mg/ml	1235	1C11A9
Source:	UNIPROT ID:	
Mouse	P51684	
Isotype:	Full Name:	
IgG2a	chemokine (C-C motif) receptor 6	
Immunogen Catalog Number:	Calculated MW:	
AG24195	42 kDa	

Applications

Tested Applications:
IF, IHC, ELISA

Species Specificity:
Human

Background Information

CCR6, also known CD196, is a C-C chemokine receptor that belongs to family A of G protein-coupled receptor superfamily. It is expressed on most B cells, memory T cells, and some subsets of dendritic cells (PMID: 17057190). CCR6 is a receptor for the C-C type chemokine CCL20 (PMID: 9169459). The ligand-receptor pair CCL20-CCR6 is responsible for the chemoattraction of immature dendritic cells, effector/memory T-cells and B-cells and plays a role at skin and mucosal surfaces under homeostatic and inflammatory conditions, as well as in pathology, including cancer and rheumatoid arthritis (PMID: 12948524). CCR6 polymorphism has been associated with rheumatoid arthritis susceptibility and CCR6 is involved in IL-17-driven autoimmunity in human diseases (PMID: 20453841).

Storage

Storage:
Store at -80°C.

The product is shipped with ice packs. Upon receipt, store it immediately at -80°C

Storage Buffer:
PBS only

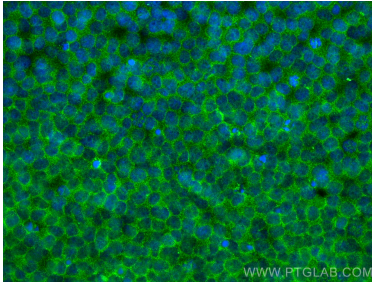
For technical support and original validation data for this product please contact:

T: 4006900926

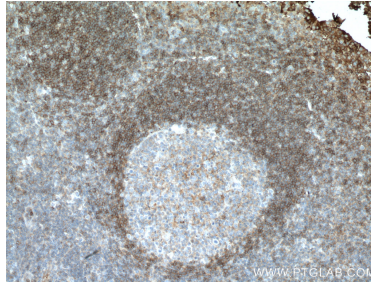
E: Proteintech-CN@ptglab.comW: ptgcn.com

This product is exclusively available under Proteintech Group brand and is not available to purchase from any other manufacturer.

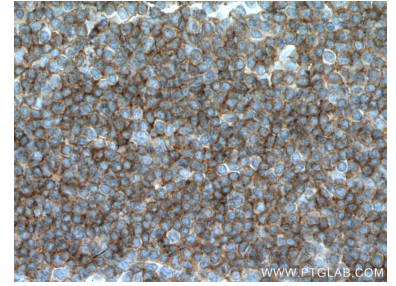
Selected Validation Data



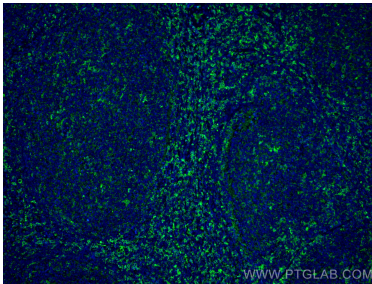
Immunofluorescent analysis of (4% PFA) fixed Jurkat cells using CCR6 antibody (66801-1-Ig, Clone: 1C11A9) at dilution of 1:800 and CoraLite®488-Conjugated AffiniPure Goat Anti-Mouse IgG(H+L). This data was developed using the same antibody clone with 66801-1-PBS in a different storage buffer formulation.



Immunohistochemical analysis of paraffin-embedded human tonsillitis tissue slide using 66801-1-Ig (CCR6 antibody) at dilution of 1:500 (under 10x lens. Heat mediated antigen retrieval with Tris-EDTA buffer (pH 9.0). This data was developed using the same antibody clone with 66801-1-PBS in a different storage buffer formulation.



Immunohistochemical analysis of paraffin-embedded human tonsillitis tissue slide using 66801-1-Ig (CCR6 antibody) at dilution of 1:500 (under 40x lens. Heat mediated antigen retrieval with Tris-EDTA buffer (pH 9.0). This data was developed using the same antibody clone with 66801-1-PBS in a different storage buffer formulation.



Immunofluorescent analysis of (4% PFA) fixed human tonsillitis tissue using CCR6 antibody (66801-1-Ig, Clone: 1C11A9) at dilution of 1:800 and CoraLite®488-Conjugated AffiniPure Goat Anti-Mouse IgG(H+L). This data was developed using the same antibody clone with 66801-1-PBS in a different storage buffer formulation.