

For Research Use Only

# Mouse Bcl2 Monoclonal antibody, PBS Only

Catalog Number: 66799-1-PBS



## Basic Information

Catalog Number: 66799-1-PBS	GenBank Accession Number: NM-009741	Purification Method: Protein G purification
Size: 1 mg/ml	GeneID (NCBI): 12043	CloneNo.: 1B5B9
Source: Mouse	Full Name: B-cell leukemia/lymphoma 2	
Isotype: IgG1	Calculated MW: 26 kDa	
Immunogen Catalog Number: AG24261	Observed MW: 26 kDa	

## Applications

Tested Applications:  
WB, IF/ICC, Indirect ELISA

Species Specificity:  
mouse

## Background Information

Bcl2 is a member of the B cell lymphoma 2 protein family. Members of this family regulate cell death in multiple cell types and can have either proapoptotic or antiapoptotic activities. The protein encoded by this gene inhibits mitochondrial-mediated apoptosis. This protein is an integral outer mitochondrial membrane protein that functions as part of signaling pathway that controls mitochondrial permeability in response to apoptotic stimuli. This protein may also play a role in neuron cell survival and autophagy. Abnormal expression and chromosomal translocations of this gene are associated with cancer progression in numerous tissues.

## Storage

Storage:  
Store at -80°C.  
**The product is shipped with ice packs. Upon receipt, store it immediately at -80°C**

Storage Buffer:  
PBS Only

For technical support and original validation data for this product please contact:

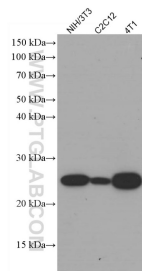
T: 4006900926

E: [Proteintech-CN@ptglab.com](mailto:Proteintech-CN@ptglab.com)

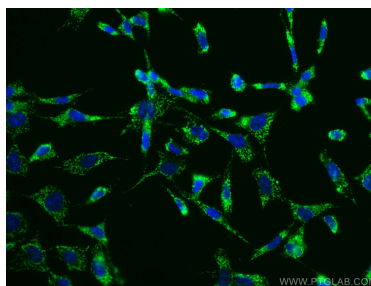
W: [ptgcn.com](http://ptgcn.com)

**This product is exclusively available under Proteintech Group brand and is not available to purchase from any other manufacturer.**

## Selected Validation Data



Various lysates were subjected to SDS PAGE followed by western blot with 66799-1-Ig (Bcl2 antibody) at dilution of 1:1400 incubated at room temperature for 1.5 hours. This data was developed using the same antibody clone with 66799-1-PBS in a different storage buffer formulation.



Immunofluorescent analysis of (-20°C Ethanol) fixed NIH/3T3 cells using Bcl2 antibody (66799-1-Ig, Clone: 1B5B9 ) at dilution of 1:100 and CoraLite®488-Conjugated AffiniPure Goat Anti-Mouse IgG(H+L). This data was developed using the same antibody clone with 66799-1-PBS in a different storage buffer formulation.