

For Research Use Only

# Bcl2 Monoclonal antibody

Catalog Number: 66799-1-Ig **24 Publications**



## Basic Information

Catalog Number: 66799-1-Ig	GenBank Accession Number: NM-009741	Purification Method: Protein G purification
Size: 3000 ug/ml	GeneID (NCBI): 12043	CloneNo.: 1B5B9
Source: Mouse	Full Name: B-cell leukemia/lymphoma 2	Recommended Dilutions: WB 1:500-1:2000 IF/ICC 1:200-1:800
Isotype: IgG1	Calculated MW: 26 kDa	
Immunogen Catalog Number: AG24261	Observed MW: 26 kDa	

## Applications

Tested Applications: WB, IF/ICC, ELISA	Positive Controls:
Cited Applications: WB, IF, IP	WB : NIH/3T3 cells, RAW 264.7 cells, mouse brain tissue, C2C12 cells, 4T1 cells
Species Specificity: mouse	IF/ICC : NIH/3T3 cells,
Cited Species: human, mouse, rat	

## Background Information

Bcl2 is a member of the B cell lymphoma 2 protein family. Members of this family regulate cell death in multiple cell types and can have either proapoptotic or antiapoptotic activities. The protein encoded by this gene inhibits mitochondrial-mediated apoptosis. This protein is an integral outer mitochondrial membrane protein that functions as part of signaling pathway that controls mitochondrial permeability in response to apoptotic stimuli. This protein may also play a role in neuron cell survival and autophagy. Abnormal expression and chromosomal translocations of this gene are associated with cancer progression in numerous tissues.

## Notable Publications

Author	Pubmed ID	Journal	Application
Chen Chen	30412827	Redox Biol	
Xiaohua Lei	32400797	Food Funct	WB
Ran Zhang	33979163	J Nat Prod	WB

## Storage

Storage:  
Store at -20°C. Stable for one year after shipment.  
Storage Buffer:  
PBS with 0.02% sodium azide and 50% glycerol pH 7.3.  
Aliquoting is unnecessary for -20°C storage

For technical support and original validation data for this product please contact:

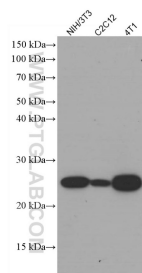
T: 4006900926

E: [Proteintech-CN@ptglab.com](mailto:Proteintech-CN@ptglab.com)

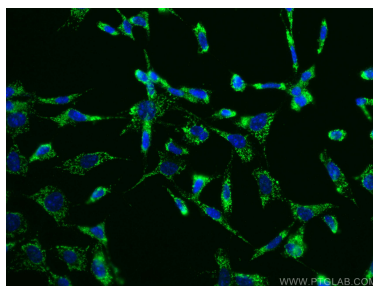
W: [ptgcn.com](http://ptgcn.com)

This product is exclusively available under Proteintech Group brand and is not available to purchase from any other manufacturer.

## Selected Validation Data



Various lysates were subjected to SDS PAGE followed by western blot with 66799-1-Ig (Bcl2 antibody) at dilution of 1:1400 incubated at room temperature for 1.5 hours.



Immunofluorescent analysis of (-20°C Ethanol) fixed NIH/3T3 cells using Bcl2 antibody (66799-1-Ig, Clone: 1B5B9) at dilution of 1:100 and CoraLite®488-Conjugated AffiniPure Goat Anti-Mouse IgG(H+L).