

For Research Use Only

# SOCS3 Monoclonal antibody, PBS Only

Catalog Number: 66797-1-PBS



## Basic Information

<b>Catalog Number:</b> 66797-1-PBS	<b>GenBank Accession Number:</b> BC060858	<b>Purification Method:</b> Protein G purification
<b>Source:</b> Mouse	<b>GeneID (NCBI):</b> 9021	<b>CloneNo.:</b> 1G2B12
<b>Isotype:</b> IgG1	<b>UNIPROT ID:</b> O14543	
<b>Immunogen Catalog Number:</b> AG5386	<b>Full Name:</b> suppressor of cytokine signaling 3	
	<b>Calculated MW:</b> 25 kDa	
	<b>Observed MW:</b> 25 kDa	

## Applications

**Tested Applications:**  
WB, IHC, IF-P, Indirect ELISA

**Species Specificity:**  
human, mouse

## Background Information

Suppressor of cytokine signaling 3 (SOCS3) is a member of SOCS family that these proteins induced to attenuate cytokine signal transduction in response to signals from a diverse range of cytokines and growth factors. SOCS3 is a negative regulatory protein that inhibits signaling induced by IL-6 via preventing JAK mediated activation of STAT3. However SOCS3 can positively regulate the ERK-MAPK pathway, inhibit the NF- $\kappa$ B pathway (PMID:26429311,25035930). In addition, SOCS3 brings a great impact on immune responses by inhibiting signaling stimulus, such as LPS, type I and type II IFNs, and IL-12. SOCS3 is widely expressed in heart, placenta, skeletal muscle, peripheral blood leukocytes, fetal and adult lung, and fetal liver and kidney (PMID: 22961088). Dysregulation of SOCS3 functions can cause a variety of diseases, including allergy, autoimmune diseases, inflammation and cancer (PMID:26429311).

## Storage

**Storage:**  
Store at -80°C.

**The product is shipped with ice packs. Upon receipt, store it immediately at -80°C**

**Storage Buffer:**  
PBS only, pH7.3

For technical support and original validation data for this product please contact:

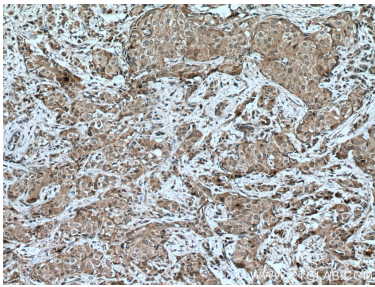
T: 4006900926

E: [Proteintech-CN@ptglab.com](mailto:Proteintech-CN@ptglab.com)

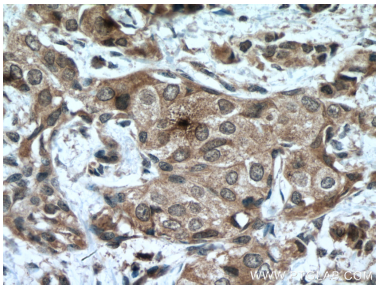
W: [ptgcn.com](http://ptgcn.com)

**This product is exclusively available under Proteintech Group brand and is not available to purchase from any other manufacturer.**

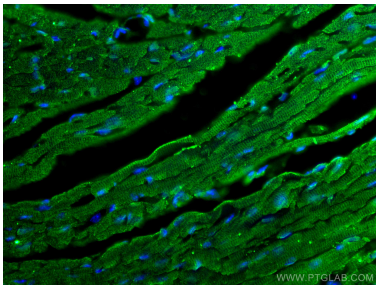
Selected Validation Data



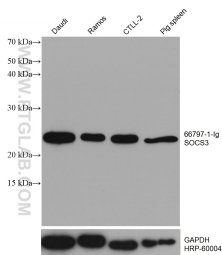
Immunohistochemical analysis of paraffin-embedded human breast cancer tissue slide using 66797-1-Ig (SOCS3 antibody) at dilution of 1:500 (under 10x lens. Heat mediated antigen retrieval with Tris-EDTA buffer (pH 9.0). This data was developed using the same antibody clone with 66797-1-PBS in a different storage buffer formulation.



Immunohistochemical analysis of paraffin-embedded human breast cancer tissue slide using 66797-1-Ig (SOCS3 antibody) at dilution of 1:500 (under 40x lens. Heat mediated antigen retrieval with Tris-EDTA buffer (pH 9.0). This data was developed using the same antibody clone with 66797-1-PBS in a different storage buffer formulation.



Immunofluorescent analysis of (4% PFA) fixed mouse heart tissue using SOCS3 antibody (66797-1-Ig, Clone: 1G2B12 ) at dilution of 1:800 and CoraLite®488-Conjugated AffiniPure Goat Anti-Mouse IgG(H+L). This data was developed using the same antibody clone with 66797-1-PBS in a different storage buffer formulation.



Various lysates were subjected to SDS PAGE followed by western blot with 66797-1-Ig (SOCS3 antibody) at dilution of 1:10000 incubated at room temperature for 1.5 hours. The membrane was stripped and reblotted with HRP-conjugated GAPDH Monoclonal antibody (HRP-60004) as loading control. This data was developed using the same antibody clone with 66797-1-PBS in a different storage buffer formulation.