

For Research Use Only

SOX10 Monoclonal antibody, PBS Only (Capture)

Catalog Number: 66786-1-PBS



Basic Information

Catalog Number: 66786-1-PBS	GenBank Accession Number: BC002824	Purification Method: Protein A purification
Size: 1mg/ml	GeneID (NCBI): 6663	CloneNo.: 1D2C8
Source: Mouse	UNIPROT ID: P56693	
Isotype: IgG2a	Full Name: SRY (sex determining region Y)-box 10	
Immunogen Catalog Number: AG23191	Calculated MW: 50 kDa	
	Observed MW: 55-60 kDa	

Applications

Tested Applications:
WB, IHC, IF-P, FC (Intra), Cytometric bead array,
Indirect ELISA

Species Specificity:
human, mouse, rat

Background Information

Sox10 is a transcription factor that has a crucial role in complex signalling pathways regulating central nervous system and neural crest development. The calculated molecular weight of SOX10 is 50 kDa, but modified SOX10 is about 55-60 kDa. (PMID: 23799842)

Storage

Storage:
Store at -80°C.
The product is shipped with ice packs. Upon receipt, store it immediately at -80°C

Storage Buffer:
PBS Only

For technical support and original validation data for this product please contact:

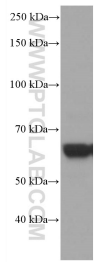
T: 4006900926

E: Proteintech-CN@ptglab.com

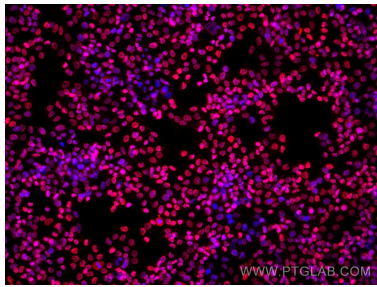
W: ptgcn.com

This product is exclusively available under Proteintech Group brand and is not available to purchase from any other manufacturer.

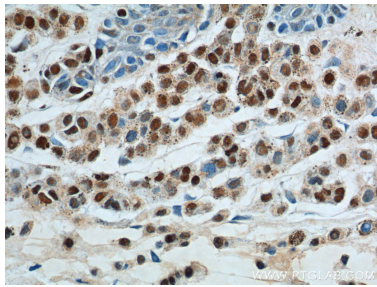
Selected Validation Data



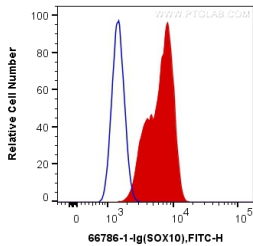
A375 cells were subjected to SDS PAGE followed by western blot with 66786-1-Ig (SOX10 antibody) at dilution of 1:3000 incubated at room temperature for 1.5 hours. This data was developed using the same antibody clone with 66786-1-PBS in a different storage buffer formulation.



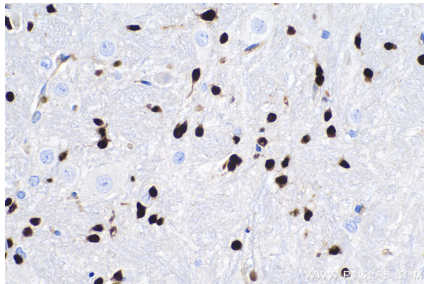
Immunofluorescent analysis of (4% PFA) fixed A375 cells using SOX10 antibody (66786-1-Ig, Clone: 1D2C8) at dilution of 1:2000 and Multi-rAb Coralite® Plus 594-Goat Anti-Mouse Recombinant Secondary Antibody (H+L) (Cat.NO. RGAM004). This data was developed using the same antibody clone with 66786-1-PBS in a different storage buffer formulation.



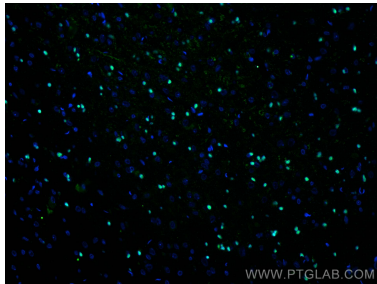
Immunohistochemical analysis of paraffin-embedded human malignant melanoma tissue slide using 66786-1-Ig (SOX10 antibody) at dilution of 1:300 (under 40x lens). This data was developed using the same antibody clone with 66786-1-PBS in a different storage buffer formulation.



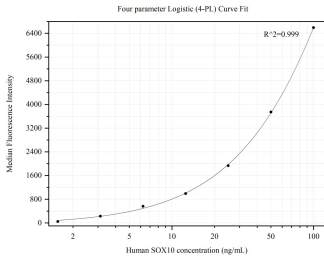
1X10⁶ C6 cells were intracellularly stained with 0.4 ug Anti-Human SOX10 (66786-1-Ig, Clone:1D2C8) and Coralite®488-Conjugated AffiniPure Goat Anti-Mouse IgG(H+L) at dilution 1:1000 (red), or 0.4 ug Mouse IgG2a Isotype Control (66360-2-Ig, Clone: K11A1B2A2) (blue). Cells were fixed and permeabilized with Transcription Factor Staining Buffer Kit (PF00011). This data was developed using the same antibody clone with 66786-1-PBS in a different storage buffer



Immunohistochemical analysis of paraffin-embedded rat cerebellum tissue slide using 66786-1-Ig (SOX10 antibody) at dilution of 1:8000 (under 40x lens). Heat mediated antigen retrieval with Tris-EDTA buffer (pH 9.0). This data was developed using the same antibody clone with 66786-1-PBS in a different storage buffer formulation.



Immunofluorescent analysis of (4% PFA) fixed rat brain tissue using SOX10 antibody (66786-1-Ig, Clone: 1D2C8) at dilution of 1:400 and Coralite®488-Conjugated AffiniPure Goat Anti-Mouse IgG(H+L). This data was developed using the same antibody clone with 66786-1-PBS in a different storage buffer formulation.



Cytometric bead array standard curve of MP50275-1, SOX10 Monoclonal Matched Antibody Pair, PBS Only. Capture antibody: 66786-1-PBS. Detection antibody: 66786-2-PBS. Standard:Ag23191. Range: 1.563-100 ng/mL.