

For Research Use Only

# LACTB Monoclonal antibody, PBS Only

Catalog Number: 66785-1-PBS



## Basic Information

Catalog Number: 66785-1-PBS	GenBank Accession Number: BC067288	Purification Method: Protein G purification
Size: 1mg/ml	GeneID (NCBI): 114294	CloneNo.: 3C3C3
Source: Mouse	UNIPROT ID: P83111	
Isotype: IgG1	Full Name: lactamase, beta	
Immunogen Catalog Number: AG12233	Calculated MW: 547 aa, 61 kDa	
	Observed MW: 50-60 kDa	

## Applications

Tested Applications:  
WB, IHC, IF/ICC, ELISA

Species Specificity:  
human

## Background Information

LACTB is also named as MRPL56, which is a component of the large subunit of the mitochondrial ribosome that is encoded by the nuclear genome. LACTB is a mammalian active-site serine protein that has evolved from a bacterial penicillin-binding protein. It promotes intramitochondrial membrane organization and micro-compartmentalization through polymerization (PMID:19858488). Northern blot analysis of mouse tissues detected expression at high levels in liver, heart, and skeletal muscle, with lower levels in kidney, testis, brain, lung, and spleen (PMID:11707067). The full-length of LACTB is about 61kDa, and a 115aa transit peptide can be removed in the mature form.

## Storage

Storage:  
Store at -80°C.  
The product is shipped with ice packs. Upon receipt, store it immediately at -80°C

Storage Buffer:  
PBS Only

For technical support and original validation data for this product please contact:

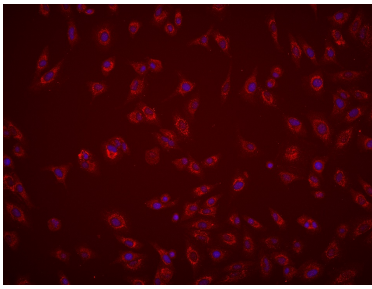
T: 4006900926

E: [Proteintech-CN@ptglab.com](mailto:Proteintech-CN@ptglab.com)

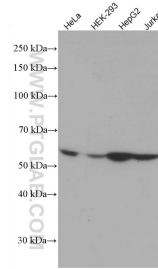
W: [ptgcn.com](http://ptgcn.com)

This product is exclusively available under Proteintech Group brand and is not available to purchase from any other manufacturer.

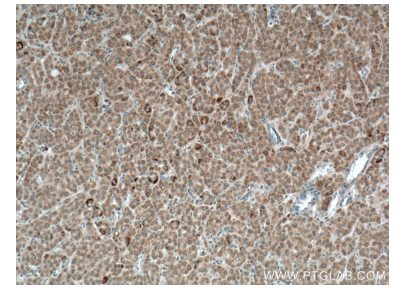
## Selected Validation Data



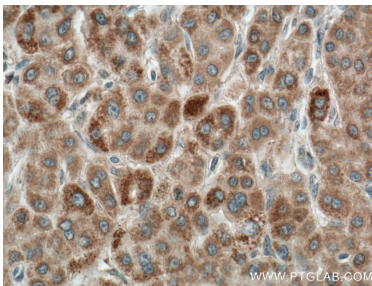
Immunofluorescent analysis of (4% PFA) fixed A549 cells using LACTB antibody (66785-1-Ig, Clone: 3C3C3 ) at dilution of 1:1600 and Multi-rAb CoraLite® Plus 594-Goat Anti-Mouse Recombinant Secondary Antibody (H+L) (Cat.NO. RGAM004 ). This data was developed using the same antibody clone with 66785-1-PBS in a different storage buffer formulation.



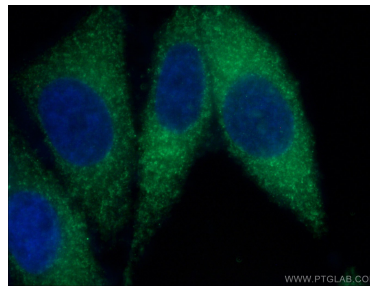
Various lysates were subjected to SDS PAGE followed by western blot with 66785-1-Ig (LACTB antibody) at dilution of 1:3000 incubated at room temperature for 1.5 hours. This data was developed using the same antibody clone with 66785-1-PBS in a different storage buffer formulation.



Immunohistochemical analysis of paraffin-embedded human liver cancer tissue slide using 66785-1-Ig (LACTB antibody) at dilution of 1:300 (under 10x lens. Heat mediated antigen retrieval with Tris-EDTA buffer (pH 9.0). This data was developed using the same antibody clone with 66785-1-PBS in a different storage buffer formulation.



Immunohistochemical analysis of paraffin-embedded human liver cancer tissue slide using 66785-1-Ig (LACTB antibody) at dilution of 1:300 (under 40x lens. Heat mediated antigen retrieval with Tris-EDTA buffer (pH 9.0). This data was developed using the same antibody clone with 66785-1-PBS in a different storage buffer formulation.



Immunofluorescent analysis of (4% PFA) fixed HepG2 cells using 66785-1-Ig (LACTB antibody) at dilution of 1:100 and Alexa Fluor 488-Conjugated AffiniPure Goat Anti-Mouse IgG(H+L). This data was developed using the same antibody clone with 66785-1-PBS in a different storage buffer formulation.