

For Research Use Only

HSPA1L Monoclonal antibody, PBS Only

Catalog Number: 66780-1-PBS



Basic Information

Catalog Number: 66780-1-PBS	GenBank Accession Number: BC034483	Purification Method: Protein A purification
Concentration: 1mg/ml	GeneID (NCBI): 3305	CloneNo.: 3E7H2
Source: Mouse	UNIPROT ID: P34931	
Isotype: IgG2b	Full Name: heat shock 70kDa protein 1-like	
Immunogen Catalog Number: AG5182	Calculated MW: 70 kDa	
	Observed MW: 70 kDa	

Applications

Tested Applications:
WB, IHC, IF/ICC, Indirect ELISA

Species Specificity:
human, mouse, rat

Background Information

HSPA1L (Hsp70-like protein 1, also known as HSP70-hom) is a member of Hsp70 family of heat shock proteins. Recently it has been reported that HSPA1L can interact with TLR4, activate dendritic cells and induce Th1 Response. This antibody well recognizes the endogenous HSPA1L protein in multiple cell lines. (21730052)

Storage

Storage:
Store at -80°C.
The product is shipped with ice packs. Upon receipt, store it immediately at -80°C

Storage Buffer:
PBS only, pH7.3

For technical support and original validation data for this product please contact:

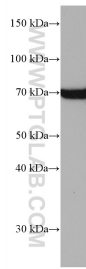
T: 4006900926

E: Proteintech-CN@ptglab.com

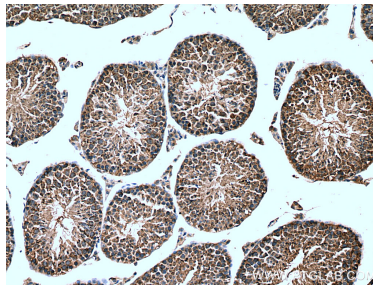
W: ptgcn.com

This product is exclusively available under Proteintech Group brand and is not available to purchase from any other manufacturer.

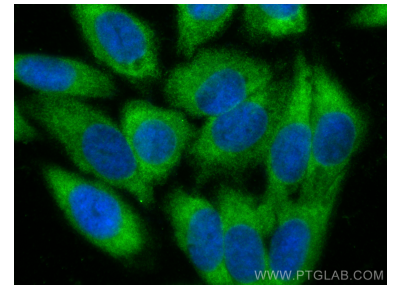
Selected Validation Data



HeLa cells were subjected to SDS PAGE followed by western blot with 66780-1-Ig (HSPA1L antibody) at dilution of 1:10000 incubated at room temperature for 1.5 hours. This data was developed using the same antibody clone with 66780-1-PBS in a different storage buffer formulation.



Immunohistochemical analysis of paraffin-embedded mouse testis tissue slide using 66780-1-Ig (HSPA1L antibody) at dilution of 1:1000 (under 10x lens). Heat mediated antigen retrieval with Tris-EDTA buffer (pH 9.0). This data was developed using the same antibody clone with 66780-1-PBS in a different storage buffer formulation.



Immunofluorescent analysis of (-20°C Ethanol) fixed HepG2 cells using HSPA1L antibody (66780-1-Ig, Clone: 3E7H2) at dilution of 1:400 and CoraLite®488-Conjugated Goat Anti-Mouse IgG(H+L) (SA00013-1). This data was developed using the same antibody clone with 66780-1-PBS in a different storage buffer formulation.