

For Research Use Only

HSPA1L Monoclonal antibody

Catalog Number: 66780-1-Ig **1 Publications**



Basic Information

Catalog Number: 66780-1-Ig	GenBank Accession Number: BC034483	Purification Method: Protein A purification
Concentration: 1000 ug/ml	GeneID (NCBI): 3305	CloneNo.: 3E7H2
Source: Mouse	UNIPROT ID: P34931	Recommended Dilutions: WB 1:5000-1:50000 IHC 1:500-1:2000 IF/ICC 1:50-1:500
Isotype: IgG2b	Full Name: heat shock 70kDa protein 1-like	
Immunogen Catalog Number: AG5182	Calculated MW: 70 kDa	
	Observed MW: 70 kDa	

Applications

Tested Applications: WB, IHC, IF/ICC, ELISA	Positive Controls:
Cited Applications: IF	WB : HeLa cells, HepG2 cells, LO2 cells, Jurkat cells, HSC-T6 cells, NIH/3T3 cells
Species Specificity: human, mouse, rat	IHC : mouse testis tissue,
Cited Species: mouse	IF/ICC : HeLa cells,
Note-IHC: suggested antigen retrieval with TE buffer pH 9.0; (*) Alternatively, antigen retrieval may be performed with citrate buffer pH 6.0	

Background Information

HSPA1L (Hsp70-like protein 1, also known as HSP70-hom) is a member of Hsp70 family of heat shock proteins. Recently it has been reported that HSPA1L can interact with TLR4, activate dendritic cells and induce Th1 Response. This antibody well recognizes the endogenous HSPA1L protein in multiple cell lines. (21730052)

Notable Publications

Author	Pubmed ID	Journal	Application
Wenqian Zhao	38553831	J Cachexia Sarcopenia Muscle	IF

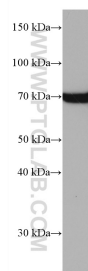
Storage

Storage:
Store at -20°C. Stable for one year after shipment.
Storage Buffer:
PBS with 0.02% sodium azide and 50% glycerol, pH7.3
Aliquoting is unnecessary for -20°C storage

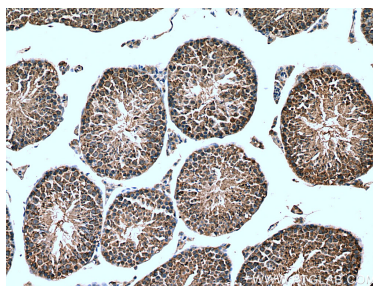
For technical support and original validation data for this product please contact:
T: 4006900926 E: Proteintech-CN@ptglab.com W: ptgcn.com

This product is exclusively available under Proteintech Group brand and is not available to purchase from any other manufacturer.

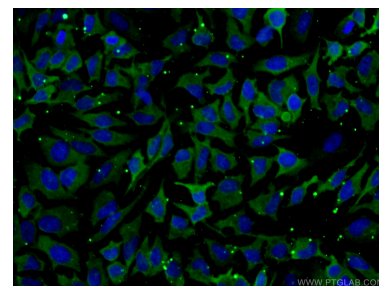
Selected Validation Data



HeLa cells were subjected to SDS PAGE followed by western blot with 66780-1-Ig (HSPA1L antibody) at dilution of 1:10000 incubated at room temperature for 1.5 hours.



Immunohistochemical analysis of paraffin-embedded mouse testis tissue slide using 66780-1-Ig (HSPA1L antibody) at dilution of 1:1000 (under 10x lens). Heat mediated antigen retrieval with Tris-EDTA buffer (pH 9.0).



Immunofluorescent analysis of (-20°C Ethanol) fixed HeLa cells using 66780-1-Ig (HSPA1L antibody) at dilution of 1:100 and CoraLite488-Conjugated AffiniPure Goat Anti-Mouse IgG(H+L).