

For Research Use Only

Glycophorin A Monoclonal antibody



Catalog Number: 66778-1-Ig **1 Publications**

Basic Information

Catalog Number: 66778-1-Ig	GenBank Accession Number: BC005319	Purification Method: Protein G purification
Size: 1200 µg/ml	GeneID (NCBI): 2993	CloneNo.: 2B12G10
Source: Mouse	UNIPROT ID: P02724	Recommended Dilutions: WB 1:2000-1:6000 IHC 1:10000-1:40000 IF 1:200-1:800
Isotype: IgG1	Full Name: glycophorin A (MNS blood group)	
Immunogen Catalog Number: AG8635	Calculated MW: 150 aa, 16 kDa	
	Observed MW: 36-38 kDa	

Applications

Tested Applications: FC, IF-P, IHC, WB, ELISA	Positive Controls: WB : human blood tissue, IHC : human placenta tissue, human stomach cancer tissue, human spleen tissue IF : human placenta tissue,
Cited Applications: WB	
Species Specificity: Human	
Cited Species: human	
Note-IHC: suggested antigen retrieval with TE buffer pH 9.0; (*) Alternatively, antigen retrieval may be performed with citrate buffer pH 6.0	

Background Information

Glycophorin A (GYPA) is the major transmembrane sialoglycoprotein in erythrocytes. It is a dimeric type I transmembrane protein carrying 15 closely clustered O-linked tetrasaccharides capped with sialic acid/N-acetylneuraminic acid (Neu5Ac). This 36 kDa protein represents the major sialoglycoprotein of the red blood cell membrane displaying about one million copies per cell. (PMID: 9490702)

Notable Publications

Author	Pubmed ID	Journal	Application
Ryosuke Amagai	38308089	J Biochem	WB

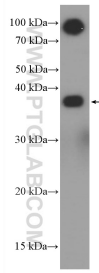
Storage

Storage:
Store at -20°C. Stable for one year after shipment.
Storage Buffer:
PBS with 0.02% sodium azide and 50% glycerol pH 7.3.
Aliquoting is unnecessary for -20°C storage

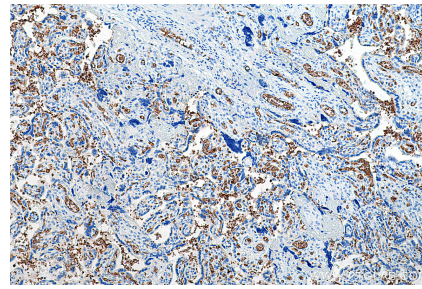
For technical support and original validation data for this product please contact:
T: 4006900926 E: Proteintech-CN@ptglab.com W: ptgcn.com

This product is exclusively available under Proteintech Group brand and is not available to purchase from any other manufacturer.

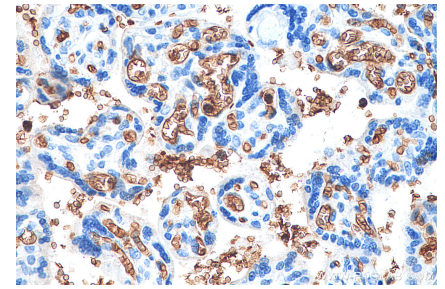
Selected Validation Data



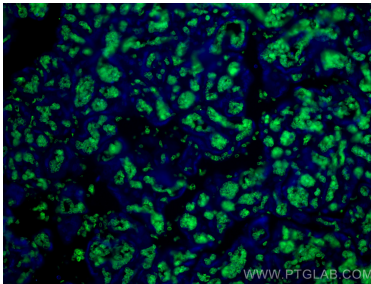
human blood were subjected to SDS PAGE followed by western blot with 66778-1-Ig (GYPA antibody) at dilution of 1:5000 incubated at room temperature for 1.5 hours.



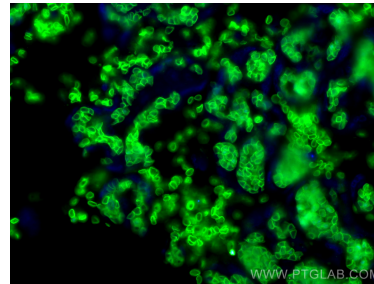
Immunohistochemical analysis of paraffin-embedded human placenta tissue slide using 66778-1-Ig (Glycophorin A antibody) at dilution of 1:20000 (under 10x lens). Heat mediated antigen retrieval with Tris-EDTA buffer (pH 9.0).



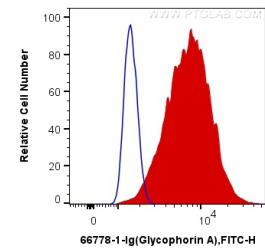
Immunohistochemical analysis of paraffin-embedded human placenta tissue slide using 66778-1-Ig (Glycophorin A antibody) at dilution of 1:20000 (under 40x lens). Heat mediated antigen retrieval with Tris-EDTA buffer (pH 9.0).



Immunofluorescent analysis of (4% PFA) fixed human placenta tissue using Glycophorin A antibody (66778-1-Ig, Clone: 2B12G10) at dilution of 1:400 and CoraLite®488-Conjugated AffiniPure Goat Anti-Mouse IgG(H+L).



Immunofluorescent analysis of (4% PFA) fixed human placenta tissue using Glycophorin A antibody (66778-1-Ig, Clone: 2B12G10) at dilution of 1:400 and CoraLite®488-Conjugated AffiniPure Goat Anti-Mouse IgG(H+L).



1×10^6 K-562 cells were intracellularly stained with 0.4 ug Anti-Human Glycophorin A (66778-1-Ig, Clone:2B12G10) and CoraLite®488-Conjugated AffiniPure Goat Anti-Mouse IgG(H+L) at dilution 1:1000 (red), or 0.4 ug Control Antibody. Cells were fixed with 4% PFA and permeabilized with Flow Cytometry Perm Buffer (PF00011-C).