

For Research Use Only

MFN1 Monoclonal antibody, PBS Only



Catalog Number: 66776-1-PBS

Basic Information

Catalog Number: 66776-1-PBS	GenBank Accession Number: BC040557	Purification Method: Protein A purification
Size: 1 mg/ml	GeneID (NCBI): 55669	CloneNo.: 3F11C11
Source: Mouse	UNIPROT ID: Q8IWA4	
Isotype: IgG2a	Full Name: mitofusin 1	
Immunogen Catalog Number: AG4890	Calculated MW: 741 aa, 84 kDa	
	Observed MW: 84 kDa	

Applications

Tested Applications:
WB, IHC, IF, ELISA

Species Specificity:
Human, mouse, rat

Background Information

Mitofusin-1 (MFN1) is a mediator of mitochondrial fusion. This protein and mitofusin 2 are homologs of the Drosophila protein fuzzy onion (Fzo). Mitofusins are large predicted GTPases located in outer mitochondrial membrane. They are essential for outer membrane fusion by interacting with each other to facilitate mitochondrial targeting. The mitofusins are the first known protein mediator of mitochondrial fusion, and mediate developmentally regulated post-meiotic fusion of mitochondria. Mitofusin 1 and mitofusin 2 are ubiquitinated in a PINK1/parkin-dependent manner upon induction of mitophagy (PMID: 20871098).

Storage

Storage:
Store at -20°C. Stable for one year after shipment.

Storage Buffer:
PBS only

Aliquoting is unnecessary for -20°C storage

For technical support and original validation data for this product please contact:

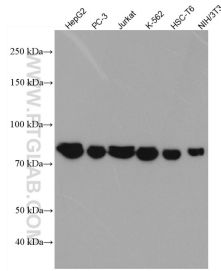
T: 4006900926

E: Proteintech-CN@ptglab.com

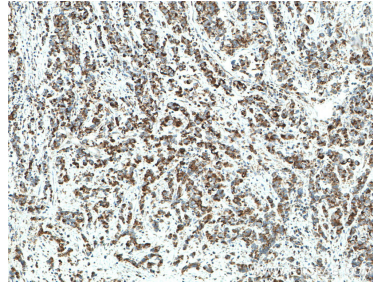
W: ptgcn.com

This product is exclusively available under Proteintech Group brand and is not available to purchase from any other manufacturer.

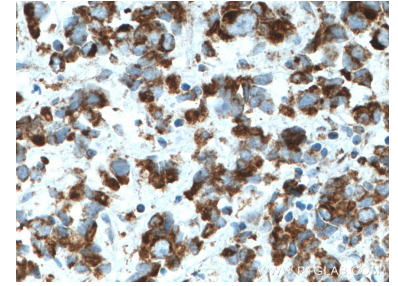
Selected Validation Data



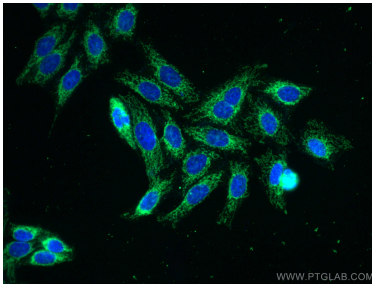
Various lysates were subjected to SDS PAGE followed by western blot with 66776-1-Ig (MFN1 antibody) at dilution of 1:5000 incubated at room temperature for 1.5 hours. This data was developed using the same antibody clone with 66776-1-PBS in a different storage buffer formulation.



Immunohistochemical analysis of paraffin-embedded human prostate cancer tissue slide using 66776-1-Ig (MFN1 antibody) at dilution of 1:1000 (under 10x lens. Heat mediated antigen retrieval with Tris-EDTA buffer (pH 9.0). This data was developed using the same antibody clone with 66776-1-PBS in a different storage buffer formulation.



Immunohistochemical analysis of paraffin-embedded human prostate cancer tissue slide using 66776-1-Ig (MFN1 antibody) at dilution of 1:1000 (under 40x lens. Heat mediated antigen retrieval with Tris-EDTA buffer (pH 9.0). This data was developed using the same antibody clone with 66776-1-PBS in a different storage buffer formulation.



Immunofluorescent analysis of (4% PFA) fixed HepG2 cells using MFN1 antibody (66776-1-Ig, Clone: 3F11C11) at dilution of 1:800 and CoraLite®488-Conjugated AffiniPure Goat Anti-Mouse IgG(H+L). This data was developed using the same antibody clone with 66776-1-PBS in a different storage buffer formulation.