

For Research Use Only

Syntaxin 16 Monoclonal antibody, PBS Only (Capture)

Catalog Number: 66775-1-PBS



Basic Information

Catalog Number:	66775-1-PBS	GenBank Accession Number:	BC019042	Purification Method:	Protein G purification
Concentration:	1mg/ml	GeneID (NCBI):	8675	CloneNo.:	4A9D8
Source:	Mouse	UNIPROT ID:	O14662		
Isotype:	IgG1	Full Name:	syntaxin 16		
Immunogen Catalog Number:	AG27926	Calculated MW:	37 kDa		
		Observed MW:	37-40 kDa		

Applications

Tested Applications:
WB, IHC, IF/ICC, Cytometric bead array, Indirect ELISA, Sample test

Species Specificity:
human, mouse, rat

Background Information

Syntaxin 16 (STX16), also named as SYN16, belongs to the syntaxin family. Syntaxins are target membrane SNAREs (Soluble NSF attachment protein receptors) which are membrane components that determine the specificity of the docking and fusion of vesicles to target membranes. STX16 is localized to the Golgi apparatus.

Storage

Storage:
Store at -80°C.
The product is shipped with ice packs. Upon receipt, store it immediately at -80°C

Storage Buffer:
PBS only, pH7.3

For technical support and original validation data for this product please contact:

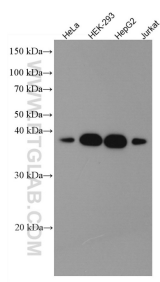
T: 4006900926

E: Proteintech-CN@ptglab.com

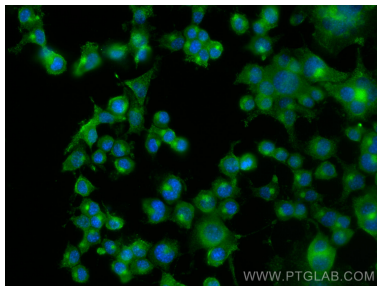
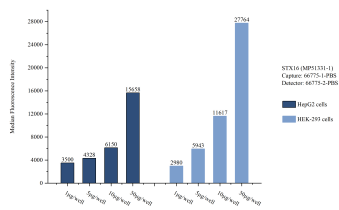
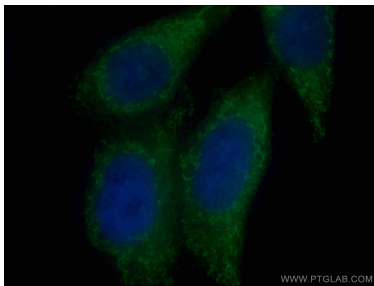
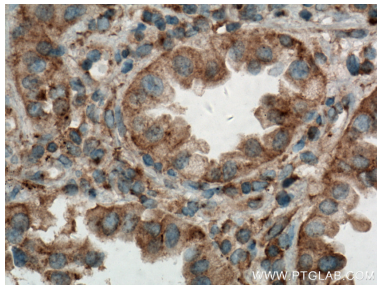
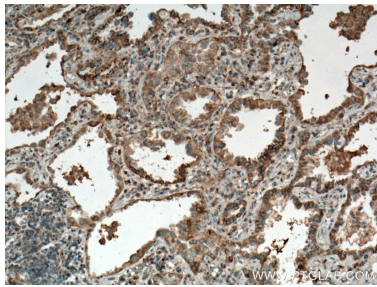
W: ptgcn.com

This product is exclusively available under Proteintech Group brand and is not available to purchase from any other manufacturer.

Selected Validation Data



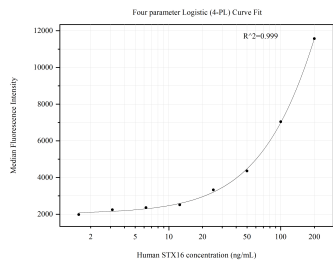
Various lysates were subjected to SDS PAGE followed by western blot with 66775-1-Ig (Syntaxin 16 antibody) at dilution of 1:5000 incubated at room temperature for 1.5 hours. This data was developed using the same antibody clone with 66775-1-PBS in a different storage buffer formulation.



Immunofluorescent analysis of (4% PFA) fixed HepG2 cells using 66775-1-Ig (Syntaxin 16 antibody) at dilution of 1:100 and Alexa Fluor 488-Conjugated AffiniPure Goat Anti-Mouse IgG(H+L). This data was developed using the same antibody clone with 66775-1-PBS in a different storage buffer formulation.

Sample test of MP51331-1, STX16 Monoclonal Matched Antibody Pair, PBS Only. Capture antibody: 66775-1-PBS. Detection antibody: 66775-2-PBS.

Immunofluorescent analysis of (4% PFA) fixed Neuro-2a cells using Syntaxin 16 antibody (66775-1-Ig, Clone: 4A9D8) at dilution of 1:800 and CoraLite@488-Conjugated AffiniPure Goat Anti-Mouse IgG(H+L). This data was developed using the same antibody clone with 66775-1-PBS in a different storage buffer formulation.



Cytometric bead array standard curve of MP51331-1, STX16 Monoclonal Matched Antibody Pair, PBS Only. Capture antibody: 66775-1-PBS. Detection antibody: 66775-2-PBS. Standard:Ag27926. Range: 1.563-200 ng/mL.