

Syntaxin 16 Monoclonal antibody

Catalog Number: 66775-1-Ig

Basic Information

Catalog Number:

66775-1-Ig

Size:

1000 µg/ml

Source:

Mouse

Isotype:

IgG1

Immunogen Catalog Number:

AG27926

GenBank Accession Number:

BC019042

GeneID (NCBI):

8675

UNIPROT ID:

O14662

Full Name:

syntaxin 16

Calculated MW:

37 kDa

Observed MW:

37-40 kDa

Purification Method:

Protein G purification

CloneNo.:

4A9D8

Recommended Dilutions:

WB 1:2000-1:10000

IHC 1:250-1:1000

IF/ICC 1:100-1:800

Applications

Tested Applications:

WB, IF/ICC, IHC, ELISA

Species Specificity:

Human, Mouse, Rat

Note-IHC: suggested antigen retrieval with TE buffer pH 9.0; (*) Alternatively, antigen retrieval may be performed with citrate buffer pH 6.0

Positive Controls:

WB : HeLa cells, rat brain tissue, mouse brain tissue, HEK-293 cells, HepG2 cells, Jurkat cells

IHC : human lung cancer tissue, human colon cancer tissue

IF/ICC : Neuro-2a cells,

Background Information

Syntaxin 16 (STX16), also named as SYN16, belongs to the syntaxin family. Syntaxins are target membrane SNAREs (Soluble NSF attachment protein receptors) which are membrane components that determine the specificity of the docking and fusion of vesicles to target membranes. STX16 is localized to the Golgi apparatus.

Storage

Storage:

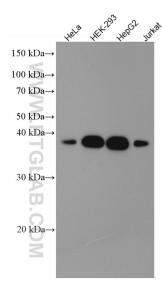
Store at -20°C. Stable for one year after shipment.

Storage Buffer:

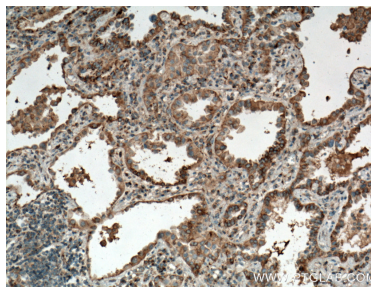
PBS with 0.02% sodium azide and 50% glycerol pH 7.3.

Aliquoting is unnecessary for -20°C storage

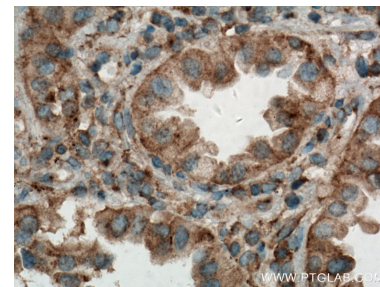
Selected Validation Data



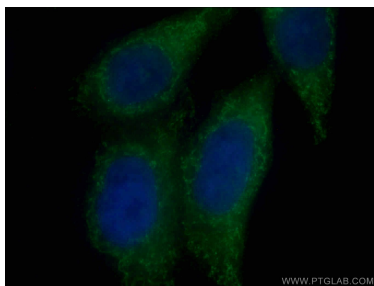
Various lysates were subjected to SDS PAGE followed by western blot with 66775-1-Ig (Syntaxin 16 antibody) at dilution of 1:5000 incubated at room temperature for 1.5 hours.



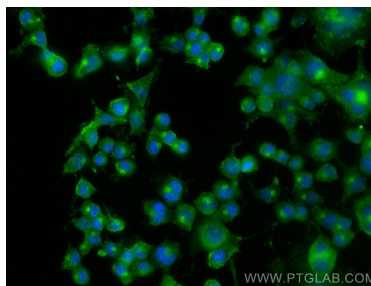
Immunohistochemical analysis of paraffin-embedded human lung cancer tissue slide using 66775-1-Ig (Syntaxin 16 antibody) at dilution of 1:500 (under 10x lens. Heat mediated antigen retrieval with Tris-EDTA buffer (pH 9.0).



Immunohistochemical analysis of paraffin-embedded human lung cancer tissue slide using 66775-1-Ig (Syntaxin 16 antibody) at dilution of 1:500 (under 40x lens. Heat mediated antigen retrieval with Tris-EDTA buffer (pH 9.0).



Immunofluorescent analysis of (4% PFA) fixed HepG2 cells using 66775-1-Ig (Syntaxin 16 antibody) at dilution of 1:100 and Alexa Fluor 488-Conjugated AffiniPure Goat Anti-Mouse IgG(H+L).



Immunofluorescent analysis of (4% PFA) fixed Neuro-2a cells using Syntaxin 16 antibody (66775-1-Ig, Clone: 4A9D8) at dilution of 1:800 and CoraLite®488-Conjugated AffiniPure Goat Anti-Mouse IgG(H+L).