

SLC25A1 Monoclonal antibody

Catalog Number: 66771-1-Ig 1 Publications

Basic Information

Catalog Number:

66771-1-Ig

Size:

1600 µg/ml

Source:

Mouse

Isotype:

IgG3

Immunogen Catalog Number:

AG7520

GenBank Accession Number:

BC004980

GeneID (NCBI):

6576

UNIPROT ID:

P53007

Full Name:

solute carrier family 25
(mitochondrial carrier; citrate
transporter), member 1

Calculated MW:

34 kDa

Observed MW:

34 kDa

Purification Method:

Protein A purification

CloneNo.:

1F11A3

Recommended Dilutions:

WB 1:5000-1:50000

Applications

Tested Applications:

WB, ELISA

Cited Applications:

WB, IP

Species Specificity:

Human, Mouse, Rat

Cited Species:

mouse

Positive Controls:

WB : HEK-293 cells, Jurkat cells, HSC-T6 cells, NIH/3T3 cells, NK-92 cells

Background Information

SLC25A1, also known as CIC or CTP, is a mitochondrial citrate transporter that exports citrate from the mitochondria to the cytosol. SLC25A1 is highly expressed in several tumor types. Recently it has been identified as a novel transcriptional target of mutant p53 and a negative tumor prognostic marker. In addition, defects in SLC25A1 has been found as a cause of combined D-2- and L-2-hydroxyglutaric aciduria. This antibody specifically recognized the endogenous SLC25A1; no protein was detected in cells from subjects containing two alleles with truncating mutations with this antibody. (24681808, 23561848)

Notable Publications

Author	Pubmed ID	Journal	Application
Weiwei Liu	35585086	Nat Commun	WB,IP

Storage

Storage:

Store at -20°C. Stable for one year after shipment.

Storage Buffer:

PBS with 0.02% sodium azide and 50% glycerol pH 7.3.

Aliquoting is unnecessary for -20°C storage

For technical support and original validation data for this product please contact:

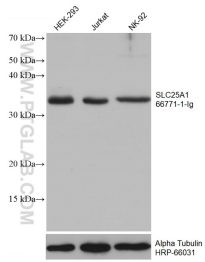
T: 4006900926

E: Proteintech-CN@ptglab.com

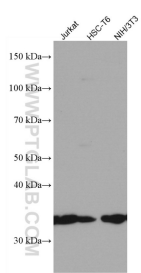
W: ptgcn.com

This product is exclusively available under Proteintech Group brand and is not available to purchase from any other manufacturer.

Selected Validation Data



Various lysates were subjected to SDS PAGE followed by western blot with 66771-1-Ig (SLC25A1 antibody) at dilution of 1:10000 incubated at room temperature for 1.5 hours. The membrane was stripped and reblotted with HRP-conjugated Alpha Tubulin Monoclonal antibody (HRP-66031) as loading control.



Various lysates were subjected to SDS PAGE followed by western blot with 66771-1-Ig (SLC25A1 antibody) at dilution of 1:3000 incubated at room temperature for 1.5 hours.