

For Research Use Only

CRM1 Monoclonal antibody, PBS Only

Catalog Number: 66763-1-PBS

Featured Product

1 Publications



Basic Information

Catalog Number:

66763-1-PBS

Concentration:

1mg/ml

Source:

Mouse

Isotype:

IgG1

Immunogen Catalog Number:

AG27337

GenBank Accession Number:

BC032847

GeneID (NCBI):

7514

UNIPROT ID:

O14980

Full Name:

exportin 1 (CRM1 homolog, yeast)

Calculated MW:

1071 aa, 123 kDa

Observed MW:

100-110 kDa

Purification Method:

Protein A purification

CloneNo.:

2D3B6

Applications

Tested Applications:

WB, IHC, Indirect ELISA

Cited Applications:

IHC

Species Specificity:

human, mouse, rat

Cited Species:

human

Background Information

CRM1 (chromosome region maintenance 1, also known as exportin-1 or XPO1), a member of the karyopherin β family of transport receptors, is an important nuclear export receptor recognizing proteins bearing a leucine-rich nuclear export signal (PMID: 9323133). CRM1 is the major receptor for the export of proteins out of the nucleus and is also required for transport of many RNAs (PMID: 17317185). In addition to nuclear export, CRM1 also plays a role in centrosome duplication and spindle assembly (PMID: 22773955). Elevated CRM1 expression has been reported in several cancers, which implicates CRM1 as a potential anti-cancer drug target (PMID: 22677130; 21683812).

Notable Publications

Author	Pubmed ID	Journal	Application
Yu Tang	39888288	Adv Sci (Weinh)	IHC

Storage

Storage:

Store at -80°C.

The product is shipped with ice packs. Upon receipt, store it immediately at -80°C

Storage Buffer:

PBS only, pH7.3

For technical support and original validation data for this product please contact:

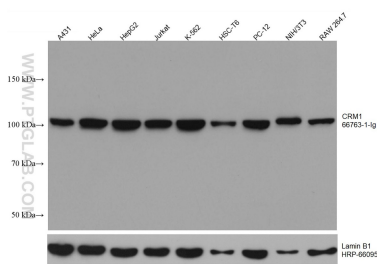
T: 4006900926

E: Proteintech-CN@ptglab.com

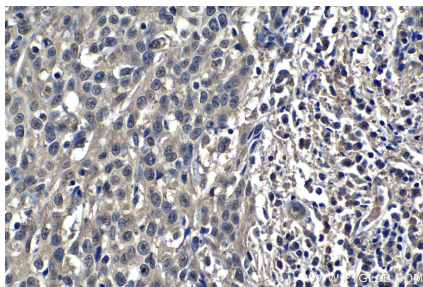
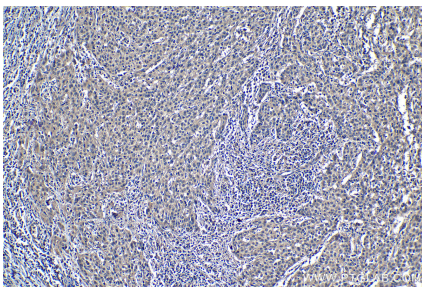
W: ptgcn.com

This product is exclusively available under Proteintech Group brand and is not available to purchase from any other manufacturer.

Selected Validation Data



Various lysates were subjected to SDS PAGE followed by western blot with 66763-1-Ig (CRM1 antibody) at dilution of 1:10000 incubated at room temperature for 1.5 hours. The membrane was stripped and reblotted with HRP-conjugated Lamin B1 Monoclonal antibody (HRP-66095) as loading control. This data was developed using the same antibody clone with 66763-1-PBS in a different storage buffer formulation.



Immunohistochemical analysis of paraffin-embedded human cervical cancer tissue slide using 66763-1-Ig (CRM1 antibody) at dilution of 1:1000 (under 10x lens). Heat mediated antigen retrieval with Tris-EDTA buffer (pH 9.0). This data was developed using the same antibody clone with 66763-1-PBS in a different storage buffer formulation.

Immunohistochemical analysis of paraffin-embedded human cervical cancer tissue slide using 66763-1-Ig (CRM1 antibody) at dilution of 1:1000 (under 40x lens). Heat mediated antigen retrieval with Tris-EDTA buffer (pH 9.0). This data was developed using the same antibody clone with 66763-1-PBS in a different storage buffer formulation.