

For Research Use Only

TSH Beta Monoclonal antibody, PBS Only



Catalog Number: 66750-1-PBS

Basic Information

Catalog Number: 66750-1-PBS	GenBank Accession Number: BC069298	Purification Method: Protein A purification
Size: 1 mg/ml	GeneID (NCBI): 7252	CloneNo.: 2G1H3
Source: Mouse	UNIPROT ID: P01222	
Isotype: IgG2b	Full Name: thyroid stimulating hormone, beta	
Immunogen Catalog Number: AG27153	Calculated MW: 138 aa, 16 kDa	

Applications

Tested Applications:
Indirect ELISA, IHC, IF

Species Specificity:
Human

Background Information

Storage

Storage:
Store at -80°C.
The product is shipped with ice packs. Upon receipt, store it immediately at -80°C

Storage Buffer:
PBS Only

For technical support and original validation data for this product please contact:

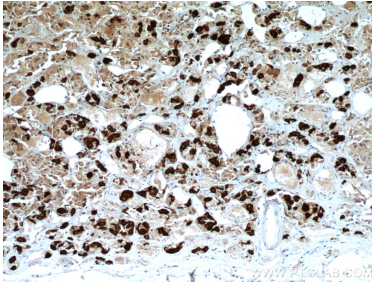
T: 4006900926

E: Proteintech-CN@ptglab.com

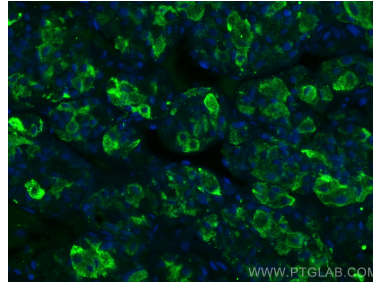
W: ptgcn.com

This product is exclusively available under Proteintech Group brand and is not available to purchase from any other manufacturer.

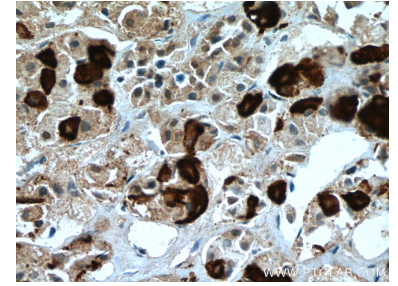
Selected Validation Data



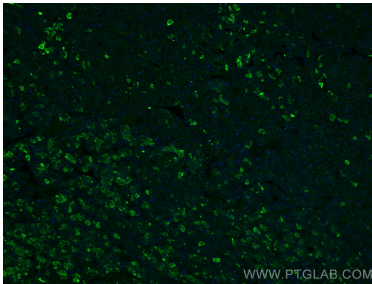
Immunohistochemical analysis of paraffin-embedded human pituitary tissue slide using 66750-1-Ig (TSH beta antibody) at dilution of 1:6000 (under 10x lens. Heat mediated antigen retrieval with Tris-EDTA buffer (pH 9.0). This data was developed using the same antibody clone with 66750-1-PBS in a different storage buffer formulation.



Immunofluorescent analysis of (4% PFA) fixed human pituitary tissue using TSH Beta antibody (66750-1-Ig, Clone: 2G1H3) at dilution of 1:400 and CoraLite®488-Conjugated AffiniPure Goat Anti-Mouse IgG(H+L). This data was developed using the same antibody clone with 66750-1-PBS in a different storage buffer formulation.



Immunohistochemical analysis of paraffin-embedded human pituitary tissue slide using 66750-1-Ig (TSH beta antibody) at dilution of 1:6000 (under 40x lens. Heat mediated antigen retrieval with Tris-EDTA buffer (pH 9.0). This data was developed using the same antibody clone with 66750-1-PBS in a different storage buffer formulation.



Immunofluorescent analysis of (4% PFA) fixed human pituitary tissue using TSH Beta antibody (66750-1-Ig, Clone: 2G1H3) at dilution of 1:400 and CoraLite®488-Conjugated AffiniPure Goat Anti-Mouse IgG(H+L). This data was developed using the same antibody clone with 66750-1-PBS in a different storage buffer formulation.