

For Research Use Only

# SRF Monoclonal antibody, PBS Only (Detector)

Catalog Number: 66742-2-PBS



## Basic Information

Catalog Number:

66742-2-PBS

Source:

Mouse

Isotype:

IgG1

Immunogen Catalog Number:

AG10386

GenBank Accession Number:

BC048211

GeneID (NCBI):

6722

UNIPROT ID:

P11831

Full Name:

serum response factor (c-fos serum response element-binding transcription factor)

Calculated MW:

508 aa, 52 kDa

Purification Method:

Protein G Magarose purification

CloneNo.:

5A10C11

## Applications

Tested Applications:

Cytometric bead array, Indirect ELISA

Species Specificity:

human

## Background Information

### Storage

Storage:

Store at -80°C.

The product is shipped with ice packs. Upon receipt, store it immediately at -80°C

Storage Buffer:

PBS only, pH7.3

For technical support and original validation data for this product please contact:

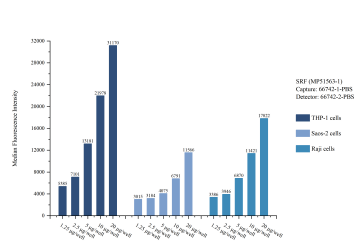
T: 4006900926

E: [Proteintech-CN@ptglab.com](mailto:Proteintech-CN@ptglab.com)

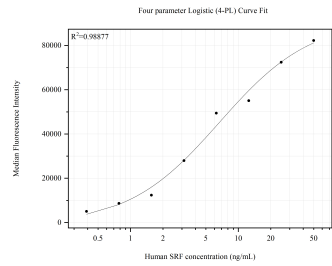
W: [ptgcn.com](http://ptgcn.com)

This product is exclusively available under Proteintech Group brand and is not available to purchase from any other manufacturer.

# Selected Validation Data



Cytometric bead array sample test of MP51563-1, SRF Monoclonal Matched Antibody Pair, PBS Only. Capture antibody: 66742-1-PBS. Detection antibody: 66742-2-PBS.



Cytometric bead array standard curve of MP51563-1, SRF Monoclonal Matched Antibody Pair, PBS Only. Capture antibody: 66742-1-PBS. Detection antibody: 66742-2-PBS. Standard:Ag10386. Range: 0.391-50 ng/mL.