

For Research Use Only

# SRF Monoclonal antibody, PBS Only

Catalog Number: 66742-1-PBS

Featured Product



## Basic Information

Catalog Number:

66742-1-PBS

Size:

1mg/ml

Source:

Mouse

Isotype:

IgG2a

Immunogen Catalog Number:

AG10386

GenBank Accession Number:

BC048211

GeneID (NCBI):

6722

UNIPROT ID:

P11831

Full Name:

serum response factor (c-fos serum response element-binding transcription factor)

Calculated MW:

508 aa, 52 kDa

Purification Method:

Protein A purification

CloneNo.:

1G8F4

## Applications

Tested Applications:

WB, IF/ICC, ELISA

Species Specificity:

human, mouse, rat

## Background Information

Serum response factor (SRF) is a transcription factor that binds the serum response element (SRE), a sequence that mediates the transient response of many cellular genes to growth stimulation. SRF is required for cardiac differentiation and maturation due to the role in cardiac cell growth and muscle gene regulation. The full-length SRF protein is 67 kDa and molecular weight of cleaved fragment is 50 kDa and 20 kDa (PMID: 21769134).

## Storage

Storage:

Store at -80°C.

The product is shipped with ice packs. Upon receipt, store it immediately at -80°C

Storage Buffer:

PBS Only

For technical support and original validation data for this product please contact:

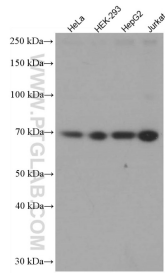
T: 4006900926

E: [Proteintech-CN@ptglab.com](mailto:Proteintech-CN@ptglab.com)

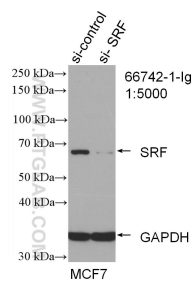
W: [ptgcn.com](http://ptgcn.com)

This product is exclusively available under Proteintech Group brand and is not available to purchase from any other manufacturer.

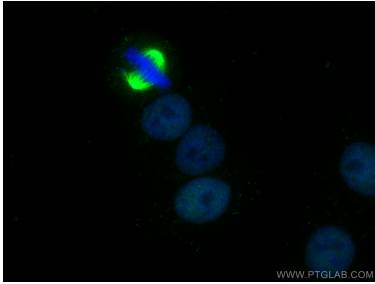
Selected Validation Data



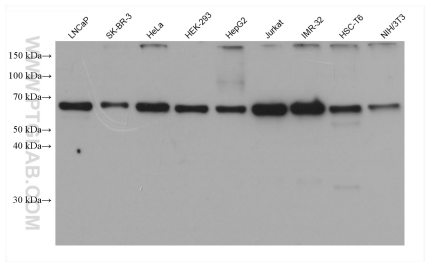
Various lysates were subjected to SDS PAGE followed by western blot with 66742-1-Ig (SRF antibody) at dilution of 1:5000 incubated at room temperature for 1.5 hours. This data was developed using the same antibody clone with 66742-1-PBS in a different storage buffer formulation.



WB result of SRF antibody (66742-1-Ig; 1:5000; incubated at room temperature for 1.5 hours) with sh-Control and sh-SRF transfected MCF-7 cells. This data was developed using the same antibody clone with 66742-1-PBS in a different storage buffer formulation.



Immunofluorescent analysis of (4% PFA) fixed HepG2 cells using SRF antibody (66742-1-Ig. Clone: 1G8F4 ) at dilution of 1:400 and CoraLite®488-Conjugated AffiniPure Goat Anti-Mouse IgG(H+L). This data was developed using the same antibody clone with 66742-1-PBS in a different storage buffer formulation.



Various lysates were subjected to SDS PAGE followed by western blot with 66742-1-Ig (SRF antibody) at dilution of 1:10000 incubated at room temperature for 1.5 hours. This data was developed using the same antibody clone with 66742-1-PBS in a different storage buffer formulation.