

For Research Use Only

EPHA2 Monoclonal antibody

Catalog Number: 66736-1-Ig

Featured Product

6 Publications



Basic Information

Catalog Number:

66736-1-Ig

Size:

1200 μ g/ml

Source:

Mouse

Isotype:

IgG1

Immunogen Catalog Number:

AG22566

GenBank Accession Number:

BC037166

GeneID (NCBI):

1969

UNIPROT ID:

P29317

Full Name:

EPH receptor A2

Calculated MW:

976 aa, 108 kDa

Observed MW:

130 kDa

Purification Method:

Protein G purification

CloneNo.:

1A9C3

Recommended Dilutions:

WB 1:5000-1:50000

Applications

Tested Applications:

FC, WB, ELISA

Cited Applications:

WB

Species Specificity:

Human

Cited Species:

human, mouse

Positive Controls:

WB : A431 cells, HEK-293 cells, BxPC-3 cells, MCF-7 cells, HepG2 cells

Background Information

Notable Publications

Author	Pubmed ID	Journal	Application
Jing Han	34487720	Arch Biochem Biophys	WB
Xinyue Zhao	36478746	J Oncol	WB
Takuya Owari	33172177	Int J Mol Sci	WB

Storage

Storage:

Store at -20°C. Stable for one year after shipment.

Storage Buffer:

PBS with 0.02% sodium azide and 50% glycerol pH 7.3.

Aliquoting is unnecessary for -20°C storage

For technical support and original validation data for this product please contact:

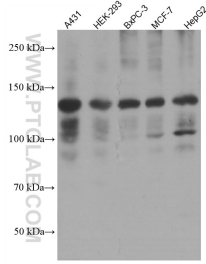
T: 4006900926

E: Proteintech-CN@ptglab.com

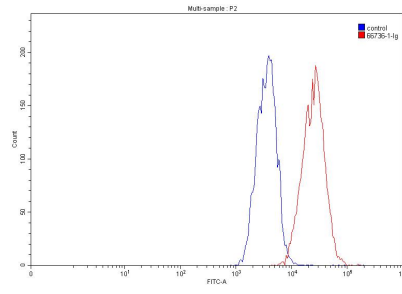
W: ptgcn.com

This product is exclusively available under Proteintech Group brand and is not available to purchase from any other manufacturer.

Selected Validation Data



Various lysates were subjected to SDS PAGE followed by western blot with 66736-1-Ig (EPHA2 antibody) at dilution of 1:10000 incubated at room temperature for 1.5 hours.



1×10^6 HeLa cells were stained with 0.20ug EPHA2 antibody (66736-1-Ig, red) and control antibody (blue). Fixed with 90% MeOH.