

For Research Use Only

Placental lactogen Monoclonal antibody



Catalog Number: 66728-1-Ig

Basic Information

Catalog Number: 66728-1-Ig	GenBank Accession Number: BC022044	Purification Method: Protein A purification
Size: 1000 µg/ml	GeneID (NCBI): 1443	CloneNo.: 1D11E4
Source: Mouse	UNIPROT ID: P01243	Recommended Dilutions: WB 1:1000-1:6000 IHC 1:150-1:600
Isotype: IgG3	Full Name: chorionic somatomammotropin hormone 2	
Immunogen Catalog Number: AG9412	Calculated MW: 217 aa, 25 kDa	
	Observed MW: 25 kDa	

Applications

Tested Applications:

IHC, WB, ELISA

Species Specificity:

Human

Note-IHC: suggested antigen retrieval with TE buffer pH 9.0; (*) Alternatively, antigen retrieval may be performed with citrate buffer pH 6.0

Positive Controls:

WB : human placenta tissue,

IHC : human placenta tissue,

Background Information

The human growth hormone (GH) locus is comprised by two GH (GH1 and GH2) genes and three chorionic somatomammotropin (CSH1, CSH2 and CSH-L) genes. Placental lactogens (CSH1, CSH2) are produced in the mammalian placenta and are similar in structure and function to growth hormones. Together, placental lactogens and growth factors play an essential role to assure successful lactation after pregnancy. Placental lactogens also modify the metabolic state of the mother during pregnancy to supply energy to the fetus. Both CSH1 and CSH2 can be detected by this antibody.

Storage

Storage:

Store at -20°C. Stable for one year after shipment.

Storage Buffer:

PBS with 0.02% sodium azide and 50% glycerol pH 7.3.

Aliquoting is unnecessary for -20°C storage

For technical support and original validation data for this product please contact:

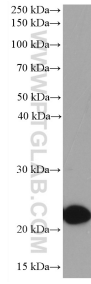
T: 4006900926

E: Proteintech-CN@ptglab.com

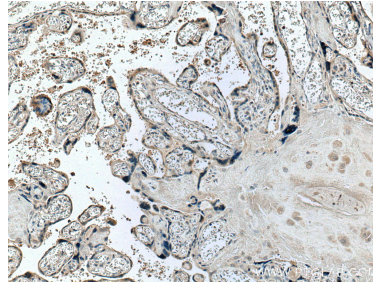
W: ptgcn.com

This product is exclusively available under Proteintech Group brand and is not available to purchase from any other manufacturer.

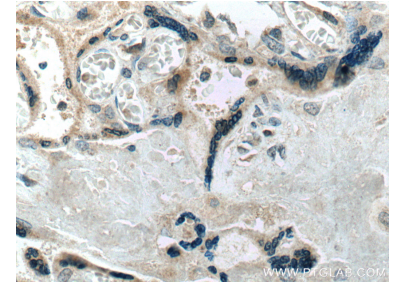
Selected Validation Data



human placenta tissue were subjected to SDS PAGE followed by western blot with 66728-1-Ig (Placental lactogen antibody) at dilution of 1:3000 incubated at room temperature for 1.5 hours.



Immunohistochemical analysis of paraffin-embedded human placenta tissue slide using 66728-1-Ig (Placental lactogen antibody) at dilution of 1:300 (under 10x lens. Heat mediated antigen retrieval with Tris-EDTA buffer (pH 9.0).



Immunohistochemical analysis of paraffin-embedded human placenta tissue slide using 66728-1-Ig (Placental lactogen antibody) at dilution of 1:300 (under 40x lens. Heat mediated antigen retrieval with Tris-EDTA buffer (pH 9.0).