

For Research Use Only

# CHCHD4 Monoclonal antibody, PBS Only



Catalog Number: 66718-1-PBS

## Basic Information

Catalog Number:	66718-1-PBS	GenBank Accession Number:	BC033775	Purification Method:	Protein G purification
Size:	1mg/ml	GeneID (NCBI):	131474	CloneNo.:	3E4C6
Source:	Mouse	UNIPROT ID:	Q8N4Q1		
Isotype:	IgG1	Full Name:	coiled-coil-helix-coiled-coil-helix domain containing 4		
Immunogen Catalog Number:	AG15339	Calculated MW:	142 aa, 16 kDa		
		Observed MW:	22 kDa		

## Applications

**Tested Applications:**  
WB, IF, IHC, Indirect ELISA

**Species Specificity:**  
Human, mouse, rat

## Background Information

CHCHD4, a component of human mitochondria, belongs to a protein family. It functions as chaperone and catalyzes the formation of disulfide bonds in substrate proteins, such as COX17. It is required for the import and folding of small cysteine-containing proteins (small Tim) in the mitochondrial intermembrane space (IMS).

## Storage

**Storage:**  
Store at -80°C.

**The product is shipped with ice packs. Upon receipt, store it immediately at -80°C**

**Storage Buffer:**  
PBS Only

For technical support and original validation data for this product please contact:

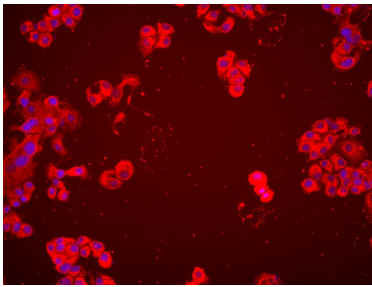
T: 4006900926

E: [Proteintech-CN@ptglab.com](mailto:Proteintech-CN@ptglab.com)

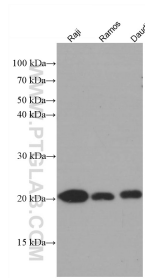
W: [ptgcn.com](http://ptgcn.com)

**This product is exclusively available under Proteintech Group brand and is not available to purchase from any other manufacturer.**

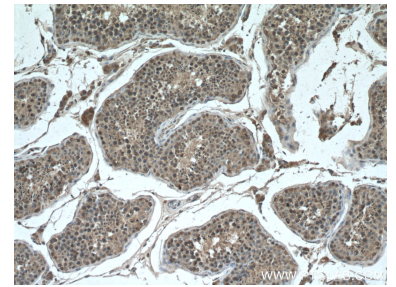
## Selected Validation Data



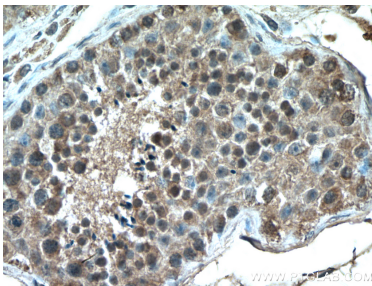
Immunofluorescent analysis of (4% PFA) fixed SK-BR-3 cells using CHCHD4 antibody (66718-1-Ig, Clone: 3E4C6) at dilution of 1:2000 and Multi-rAb CoraLite® Plus 594-Goat Anti-Mouse Recombinant Secondary Antibody (H+L) (Cat.NO. RGAM004). This data was developed using the same antibody clone with 66718-1-PBS in a different storage buffer formulation.



Various lysates were subjected to SDS PAGE followed by western blot with 66718-1-Ig (CHCHD4 antibody) at dilution of 1:2000 incubated at room temperature for 1.5 hours. This data was developed using the same antibody clone with 66718-1-PBS in a different storage buffer formulation.



Immunohistochemical analysis of paraffin-embedded human testis tissue slide using 66718-1-Ig (CHCHD4 antibody) at dilution of 1:200 (under 10x lens. Heat mediated antigen retrieval with Tris-EDTA buffer (pH 9.0). This data was developed using the same antibody clone with 66718-1-PBS in a different storage buffer formulation.



Immunohistochemical analysis of paraffin-embedded human testis tissue slide using 66718-1-Ig (CHCHD4 antibody) at dilution of 1:200 (under 40x lens. Heat mediated antigen retrieval with Tris-EDTA buffer (pH 9.0). This data was developed using the same antibody clone with 66718-1-PBS in a different storage buffer formulation.