

CHCHD4 Monoclonal antibody

Catalog Number: 66718-1-Ig

Basic Information

Catalog Number:

66718-1-Ig

Size:

2000 µg/ml

Source:

Mouse

Isotype:

IgG1

Immunogen Catalog Number:

AG15339

GenBank Accession Number:

BC033775

GeneID (NCBI):

131474

UNIPROT ID:

Q8N4Q1

Full Name:

coiled-coil-helix-coiled-coil-helix domain containing 4

Calculated MW:

142 aa, 16 kDa

Observed MW:

22 kDa

Purification Method:

Protein G purification

CloneNo.:

3E4C6

Recommended Dilutions:

WB 1:1000-1:3000

IHC 1:50-1:500

IF/ICC 1:1000-1:4000

Applications

Tested Applications:

WB, IF, IHC, ELISA

Species Specificity:

Human, mouse, rat

Note-IHC: suggested antigen retrieval with TE buffer pH 9.0; (*) Alternatively, antigen retrieval may be performed with citrate buffer pH 6.0

Positive Controls:

WB : Raji cells, rat brain tissue, Ramos cells, Daudi cells

IHC : human testis tissue,

IF/ICC : SK-BR-3 cells,

Background Information

CHCHD4, a component of human mitochondria, belongs to a protein family. It functions as chaperone and catalyzes the formation of disulfide bonds in substrate proteins, such as COX17. It is required for the import and folding of small cysteine-containing proteins (small Tim) in the mitochondrial intermembrane space (IMS).

Storage

Storage:

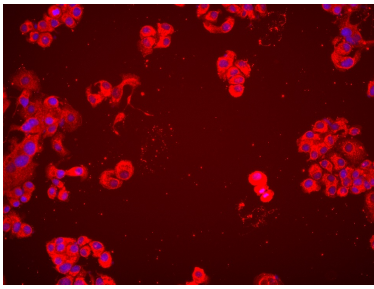
Store at -20°C. Stable for one year after shipment.

Storage Buffer:

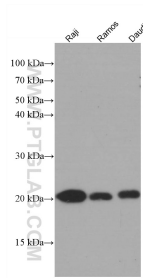
PBS with 0.02% sodium azide and 50% glycerol pH 7.3.

Aliquoting is unnecessary for -20°C storage

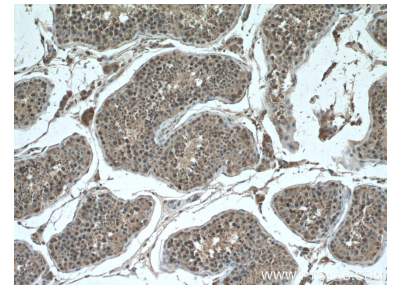
Selected Validation Data



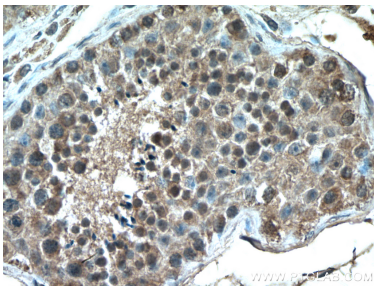
Immunofluorescent analysis of (4% PFA) fixed SK-BR-3 cells using CHCHD4 antibody (66718-1-Ig, Clone: 3E4C6) at dilution of 1:2000 and Multi-rAb CoraLite® Plus 594-Goat Anti-Mouse Recombinant Secondary Antibody (H+L) (Cat.NO. RGAM004).



Various lysates were subjected to SDS PAGE followed by western blot with 66718-1-Ig (CHCHD4 antibody) at dilution of 1:2000 incubated at room temperature for 1.5 hours.



Immunohistochemical analysis of paraffin-embedded human testis tissue slide using 66718-1-Ig (CHCHD4 antibody) at dilution of 1:200 (under 10x lens. Heat mediated antigen retrieval with Tris-EDTA buffer (pH 9.0).



Immunohistochemical analysis of paraffin-embedded human testis tissue slide using 66718-1-Ig (CHCHD4 antibody) at dilution of 1:200 (under 40x lens. Heat mediated antigen retrieval with Tris-EDTA buffer (pH 9.0).