

For Research Use Only

RBX1 Monoclonal antibody, PBS Only

Catalog Number: 66716-1-PBS



Basic Information

Catalog Number:

66716-1-PBS

Size:

1mg/ml

Source:

Mouse

Isotype:

IgG1

Immunogen Catalog Number:

AG7005

GenBank Accession Number:

BC001466

GeneID (NCBI):

9978

UNIPROT ID:

P62877

Full Name:

ring-box 1

Calculated MW:

12 kDa

Observed MW:

12-15 kDa

Purification Method:

Protein G purification

CloneNo.:

1F4D9

Applications

Tested Applications:

WB, IHC, IF/ICC, Indirect ELISA

Species Specificity:

human, mouse, rat

Background Information

RBX1(RING-box protein 1) is also named as RNF75, ROC1 and is a requisite component of the multi- subunit SCF family E3s36-40. It mediates the ubiquitination and subsequent proteasomal degradation of target proteins, including proteins involved in cell cycle progression, signal transduction, transcription and transcription-coupled nucleotide excision repair.

Storage

Storage:

Store at -80°C.

The product is shipped with ice packs. Upon receipt, store it immediately at -80°C

Storage Buffer:

PBS Only

For technical support and original validation data for this product please contact:

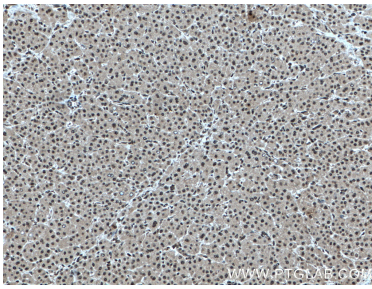
T: 4006900926

E: Proteintech-CN@ptglab.com

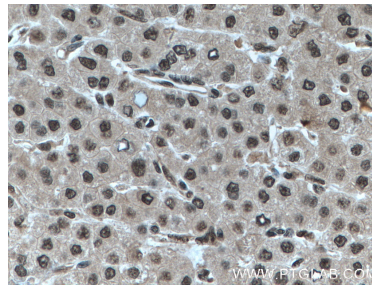
W: ptgcn.com

This product is exclusively available under Proteintech Group brand and is not available to purchase from any other manufacturer.

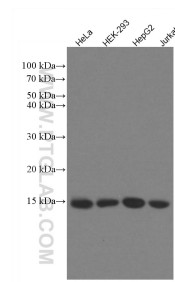
Selected Validation Data



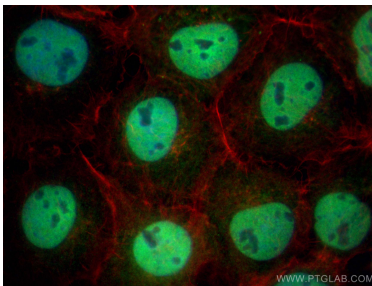
Immunohistochemical analysis of paraffin-embedded human liver cancer tissue slide using 66716-1-Ig (RBX1 antibody) at dilution of 1:5000 (under 10x lens) Heat mediated antigen retrieved with Sodium Citrate buffer (pH 6.0). This data was developed using the same antibody clone with 66716-1-PBS in a different storage buffer formulation.



Immunohistochemical analysis of paraffin-embedded human liver cancer tissue slide using 66716-1-Ig (RBX1 antibody) at dilution of 1:5000 (under 40x lens) Heat mediated antigen retrieved with Sodium Citrate buffer (pH 6.0). This data was developed using the same antibody clone with 66716-1-PBS in a different storage buffer formulation.



Various lysates were subjected to SDS PAGE followed by western blot with 66716-1-Ig (RBX1 antibody) at dilution of 1:50000 incubated at room temperature for 1.5 hours. This data was developed using the same antibody clone with 66716-1-PBS in a different storage buffer formulation.



Immunofluorescent analysis of (4% PFA) fixed A431 cells using RBX1 antibody (66716-1-Ig, Clone: 1F4D9) at dilution of 1:2000 and Multi-rAb Coralite® Plus 488-Goat Anti-Mouse Recombinant Secondary Antibody (H+L) (RGAM002), CL594-phalloidin (red). This data was developed using the same antibody clone with 66716-1-PBS in a different storage buffer formulation.