

For Research Use Only

GSTP1 Monoclonal antibody, PBS Only

Catalog Number: 66715-1-PBS

Featured Product



Basic Information

Catalog Number:

66715-1-PBS

Concentration:

1mg/ml

Source:

Mouse

Isotype:

IgG1

Immunogen Catalog Number:

AG8880

GenBank Accession Number:

BC010915

GeneID (NCBI):

2950

UNIPROT ID:

P09211

Full Name:

glutathione S-transferase pi 1

Calculated MW:

210 aa, 23 kDa

Observed MW:

23 kDa

Purification Method:

Protein A purification

CloneNo.:

2D4A6

Applications

Tested Applications:

WB, IHC, IF/ICC, IP, Indirect ELISA

Species Specificity:

human, rat

Background Information

Storage

Storage:

Store at -80°C.

The product is shipped with ice packs. Upon receipt, store it immediately at -80°C

Storage Buffer:

PBS only

For technical support and original validation data for this product please contact:

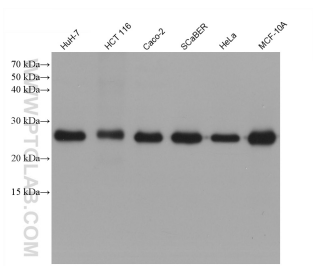
T: 4006900926

E: Proteintech-CN@ptglab.com

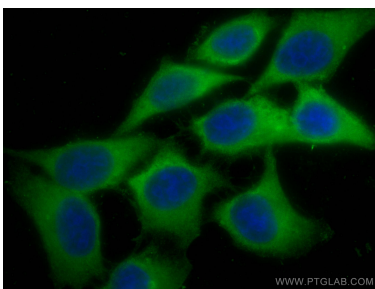
W: ptgcn.com

This product is exclusively available under Proteintech Group brand and is not available to purchase from any other manufacturer.

Selected Validation Data

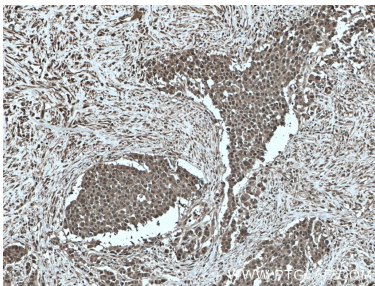


IP result of anti-GSTP1 (IP:66715-1-Ig, 4ug; Detection:66715-1-Ig 1:4000) with HeLa cells lysate 1640 ug. This data was developed using the same antibody clone with 66715-1-PBS in a different storage buffer formulation.

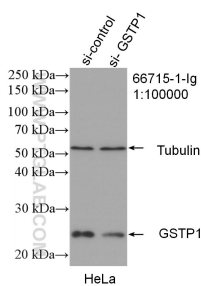


Various lysates were subjected to SDS PAGE followed by western blot with 66715-1-Ig (GSTP1 antibody) at dilution of 1:10000 incubated at room temperature for 1.5 hours. This data was developed using the same antibody clone with 66715-1-PBS in a different storage buffer formulation.

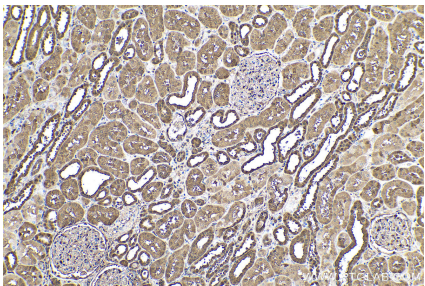
Immunofluorescent analysis of (-20°C Methanol) fixed HepG2 cells using GSTP1 antibody (66715-1-Ig, Clone: 2D4A6) at dilution of 1:800 and CoraLite®488-Conjugated AffiniPure Goat Anti-Mouse IgG(H+L). This data was developed using the same antibody clone with 66715-1-PBS in a different storage buffer formulation.



Immunohistochemical analysis of paraffin-embedded human colon cancer tissue slide using 66715-1-Ig (GSTP1 antibody) at dilution of 1:1000 (under 10x lens. Heat mediated antigen retrieval with Tris-EDTA buffer (pH 9.0). This data was developed using the same antibody clone with 66715-1-PBS in a different storage buffer formulation.



WB result of GSTP1 antibody (66715-1-Ig; 1:100000; incubated at room temperature for 1.5 hours) with sh-Control and sh-GSTP1 transfected HeLa cells. This data was developed using the same antibody clone with 66715-1-PBS in a different storage buffer formulation.



Immunohistochemical analysis of paraffin-embedded human kidney tissue slide using 66715-1-Ig (GSTP1 antibody) at dilution of 1:4000 (under 10x lens). Heat mediated antigen retrieval with Tris-EDTA buffer (pH 9.0). This data was developed using the same antibody clone with 66715-1-PBS in a different storage buffer formulation.