

For Research Use Only

RHEB Monoclonal antibody, PBS Only

Catalog Number: 66714-1-PBS



Basic Information

Catalog Number: 66714-1-PBS	GenBank Accession Number: BC016155	Purification Method: Protein G purification
Size: 1mg/ml	GeneID (NCBI): 6009	CloneNo.: 2F9H8
Source: Mouse	UNIPROT ID: Q15382	
Isotype: IgG1	Full Name: Ras homolog enriched in brain	
Immunogen Catalog Number: AG8887	Calculated MW: 184 aa, 20 kDa	
	Observed MW: 18 kDa	

Applications

Tested Applications:
WB, IHC, IF-P, Indirect ELISA

Species Specificity:
human, mouse

Background Information

Rheb is a member of the Ras superfamily small GTPases that plays important roles in the regulation of protein synthesis and growth in response to nutrient and growth factors. It is well known to bind and activate mTOR, a serine/threonine kinase which augments protein synthesis. Rheb has GTPase activity and shuttles between a GDP-bound form and a GTP-bound form, and farnesylation of the protein is required for this activity.

Storage

Storage:
Store at -80°C.
The product is shipped with ice packs. Upon receipt, store it immediately at -80°C

Storage Buffer:
PBS Only

For technical support and original validation data for this product please contact:

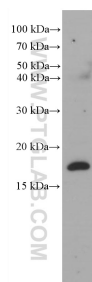
T: 4006900926

E: Proteintech-CN@ptglab.com

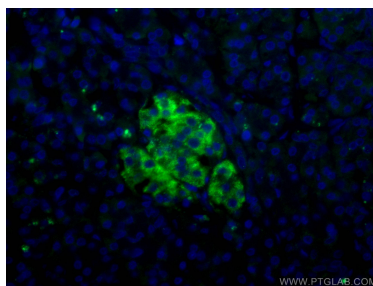
W: ptgcn.com

This product is exclusively available under Proteintech Group brand and is not available to purchase from any other manufacturer.

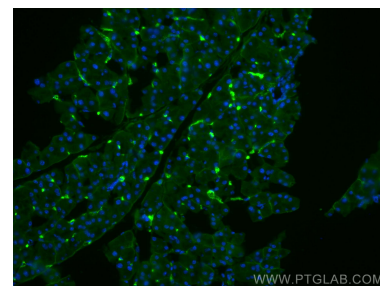
Selected Validation Data



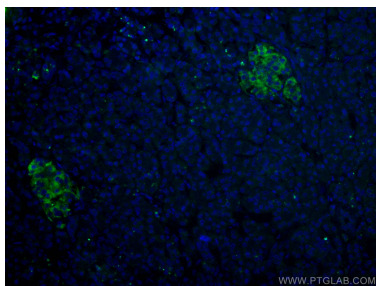
fetal human brain tissue were subjected to SDS PAGE followed by western blot with 66714-1-Ig (RHEB antibody) at dilution of 1:2000 incubated at room temperature for 1.5 hours. This data was developed using the same antibody clone with 66714-1-PBS in a different storage buffer formulation.



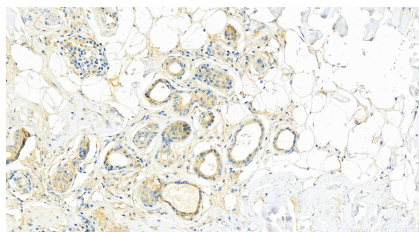
Immunofluorescent analysis of (4% PFA) fixed human pancreas cancer tissue using RHEB antibody (66714-1-Ig, Clone: 2F9H8) at dilution of 1:200 and CoraLite®488-Conjugated AffiniPure Goat Anti-Mouse IgG(H+L). This data was developed using the same antibody clone with 66714-1-PBS in a different storage buffer formulation.



Immunofluorescent analysis of (4% PFA) fixed mouse pancreas tissue using RHEB antibody (66714-1-Ig, Clone: 2F9H8) at dilution of 1:400 and CoraLite®488-Conjugated AffiniPure Goat Anti-Mouse IgG(H+L). This data was developed using the same antibody clone with 66714-1-PBS in a different storage buffer formulation.



Immunofluorescent analysis of (4% PFA) fixed human pancreas cancer tissue using RHEB antibody (66714-1-Ig, Clone: 2F9H8) at dilution of 1:200 and CoraLite®488-Conjugated AffiniPure Goat Anti-Mouse IgG(H+L). This data was developed using the same antibody clone with 66714-1-PBS in a different storage buffer formulation.



Immunohistochemical analysis of paraffin-embedded skin cancer slide using 66714-1-Ig (RHEB antibody) at dilution of 1:400 (under 20x lens). Heat mediated antigen retrieval with Tris-EDTA buffer (pH 9.0). This data was developed using the same antibody clone with 66714-1-PBS in a different storage buffer formulation.