

For Research Use Only

# RHEB Monoclonal antibody

Catalog Number: 66714-1-Ig



## Basic Information

|                                     |  |  |
|-------------------------------------|--|--|
| Catalog Number:<br>66714-1-Ig       | GenBank Accession Number:<br>BC016155                      | Purification Method:<br>Protein G purification                                   |
| Size:<br>1500 ug/ml                 | GeneID (NCBI):<br>6009                                     | CloneNo.:<br>2F9H8   |
| Source:<br>Mouse                    | UNIPROT ID:<br>Q15382                                      | Recommended Dilutions:<br>WB 1:1000-1:3000<br>IHC 1:200-1:800<br>IF-P 1:50-1:500 |
| Isotype:<br>IgG1                    | Full Name:<br>Ras homolog enriched in brain                |  |
| Immunogen Catalog Number:<br>AG8887 | Calculated MW:<br>184 aa, 20 kDa<br>Observed MW:<br>18 kDa |  |

## Applications

### Tested Applications:

WB, IHC, IF-P, ELISA

### Species Specificity:

human, mouse

**Note-IHC: suggested antigen retrieval with TE buffer pH 9.0; (\*) Alternatively, antigen retrieval may be performed with citrate buffer pH 6.0**

### Positive Controls:

WB : fetal human brain tissue, HeLa cells, DU 145 cells, mouse brain tissue

IHC : human skin cancer tissue,

IF-P : human pancreas cancer tissue, mouse pancreas tissue

## Background Information

Rheb is a member of the Ras superfamily small GTPases that plays important roles in the regulation of protein synthesis and growth in response to nutrient and growth factors. It is well known to bind and activate mTOR, a serine/threonine kinase which augments protein synthesis. Rheb has GTPase activity and shuttles between a GDP-bound form and a GTP-bound form, and farnesylation of the protein is required for this activity.

## Storage

### Storage:

Store at -20°C. Stable for one year after shipment.

### Storage Buffer:

PBS with 0.02% sodium azide and 50% glycerol pH 7.3.

Aliquoting is unnecessary for -20°C storage

For technical support and original validation data for this product please contact:

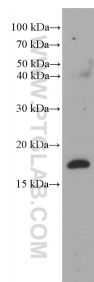
T: 4006900926

E: [Proteintech-CN@ptglab.com](mailto:Proteintech-CN@ptglab.com)

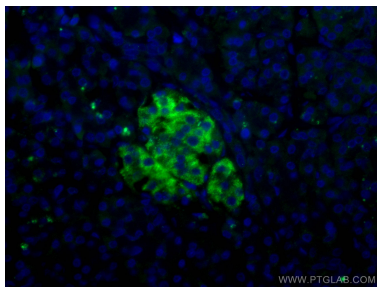
W: [ptgcn.com](http://ptgcn.com)

This product is exclusively available under Proteintech Group brand and is not available to purchase from any other manufacturer.

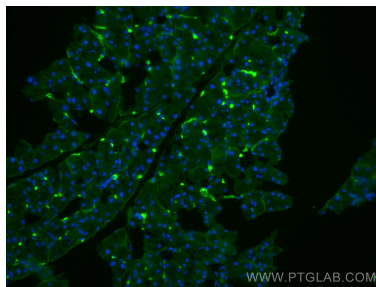
## Selected Validation Data



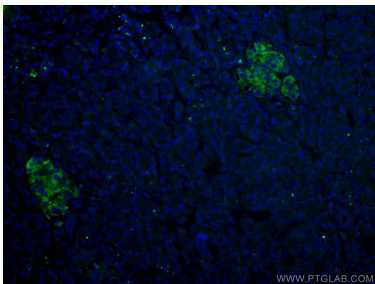
fetal human brain tissue were subjected to SDS PAGE followed by western blot with 66714-1-Ig (RHEB antibody) at dilution of 1:2000 incubated at room temperature for 1.5 hours.



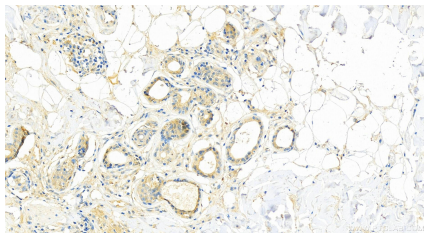
Immunofluorescent analysis of (4% PFA) fixed human pancreas cancer tissue using RHEB antibody (66714-1-Ig, Clone: 2F9H8 ) at dilution of 1:200 and CoraLite®488-Conjugated AffiniPure Goat Anti-Mouse IgG(H+L).



Immunofluorescent analysis of (4% PFA) fixed mouse pancreas tissue using RHEB antibody (66714-1-Ig, Clone: 2F9H8 ) at dilution of 1:400 and CoraLite®488-Conjugated AffiniPure Goat Anti-Mouse IgG(H+L).



Immunofluorescent analysis of (4% PFA) fixed human pancreas cancer tissue using RHEB antibody (66714-1-Ig, Clone: 2F9H8 ) at dilution of 1:200 and CoraLite®488-Conjugated AffiniPure Goat Anti-Mouse IgG(H+L).



Immunohistochemical analysis of paraffin-embedded skin cancer slide using 66714-1-Ig (RHEB antibody) at dilution of 1:400 (under 20x lens). Heat mediated antigen retrieval with Tris-EDTA buffer (pH 9.0).