

For Research Use Only

TPT1 Monoclonal antibody

Catalog Number: 66713-1-Ig **Featured Product**



Basic Information

Catalog Number: 66713-1-Ig	GenBank Accession Number: BC003352	Purification Method: Protein G purification
Size: 1000 ug/ml	GeneID (NCBI): 7178	CloneNo.: 1G6A10
Source: Mouse	UNIPROT ID: P13693	Recommended Dilutions: WB 1:5000-1:50000 IHC 1:500-1:2000 IF/ICC 1:200-1:800
Isotype: IgG1	Full Name: tumor protein, translationally-controlled 1	
Immunogen Catalog Number: AG27651	Calculated MW: 22 kDa	
	Observed MW: 22 kDa	

Applications

Tested Applications: WB, IHC, IF/ICC, ELISA	Positive Controls:
Species Specificity: human, mouse, rat	WB : Jurkat cells, HeLa cells, RAW 264.7 cells, MCF-7 cells, HSC-T6 cells, NIH/3T3 cells
Note-IHC: suggested antigen retrieval with TE buffer pH 9.0; (*) Alternatively, antigen retrieval may be performed with citrate buffer pH 6.0	IHC : human colon cancer tissue,
	IF/ICC : HEK-293 cells,

Background Information

The translationally controlled tumor protein (TPT1, also known as TCTP) is a highly conserved, abundantly expressed protein associated with cell growth and apoptosis regulation. It is overexpressed in most tumor cells and its down-regulation decreases the viability of those cells. This antibody detected 22 kDa TPT1 in lysates.

Storage

Storage:
Store at -20°C. Stable for one year after shipment.
Storage Buffer:
PBS with 0.02% sodium azide and 50% glycerol pH 7.3.
Aliquoting is unnecessary for -20°C storage

For technical support and original validation data for this product please contact:

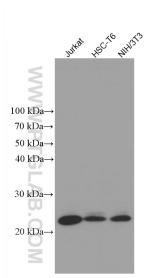
T: 4006900926

E: Proteintech-CN@ptglab.com

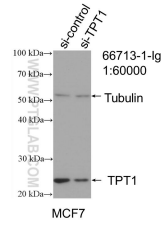
W: ptgcn.com

This product is exclusively available under Proteintech Group brand and is not available to purchase from any other manufacturer.

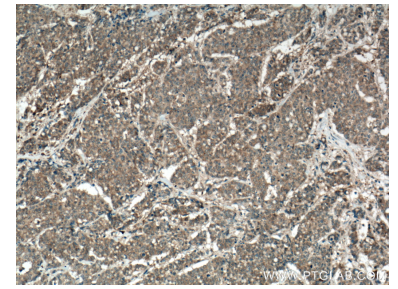
Selected Validation Data



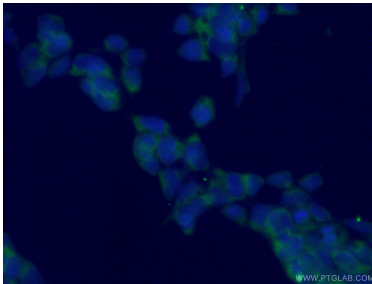
Various lysates were subjected to SDS PAGE followed by western blot with 66713-1-Ig (TPT1 antibody) at dilution of 1:10000 incubated at room temperature for 1.5 hours.



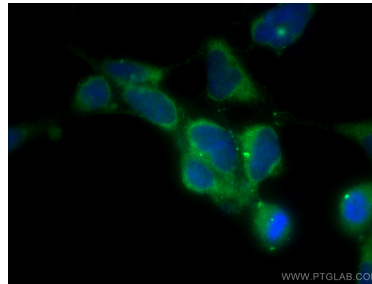
WB result of TPT1 antibody (66713-1-Ig; 1:60000; incubated at room temperature for 1.5 hours) with sh-Control and sh-TPT1 transfected MCF-7 cells.



Immunohistochemical analysis of paraffin-embedded human colon cancer tissue slide using 66713-1-Ig (TPT1 antibody) at dilution of 1:1000 (under 10x lens. Heat mediated antigen retrieval with Tris-EDTA buffer (pH 9.0).



Immunofluorescent analysis of (-20°C Ethanol) fixed HEK-293 cells using 66713-1-Ig (TPT1 antibody) at dilution of 1:100 and Alexa Fluor 488-Conjugated AffiniPure Goat Anti-Mouse IgG(H+L).



Immunofluorescent analysis of (-20°C Methanol) fixed HEK-293 cells using TPT1 antibody (66713-1-Ig, Clone: 1G6A10) at dilution of 1:400 and CoraLite® 488-Conjugated AffiniPure Goat Anti-Mouse IgG(H+L).