

NOD2 Monoclonal antibody

 Catalog Number: **66710-1-Ig** **4 Publications**

Basic Information

Catalog Number:

66710-1-Ig

Size:

1000 µg/ml

Source:

Mouse

Isotype:

IgG2a

GenBank Accession Number:

NM_022162

GeneID (NCBI):

64127

UNIPROT ID:

Q9HC29

Full Name:

nucleotide-binding oligomerization domain containing 2

Calculated MW:

115 kDa

Purification Method:

Protein A purification

CloneNo.:

1A10D1

Recommended Dilutions:

WB 1:1000-1:4000

Applications

Tested Applications:

WB, ELISA

Cited Applications:

WB, IF

Species Specificity:

Human

Cited Species:

human

Positive Controls:

WB : Jurkat cells, THP-1 cells, K-562 cells, Raji cells

Background Information

OD2, also named as CARD15 and IBD1, induces NF-kappa-B via RICK (CARDIAC, RIP2) and IKK-gamma. It confers responsiveness to intracellular bacterial lipopolysaccharides (LPS). Defects in NOD2 are the cause of Blau syndrome (BS). Defects in NOD2 are a cause of susceptibility to Crohn disease (CD). Defects in NOD2 are a cause of susceptibility to ulcerative colitis. Defects in NOD2 are the cause of early-onset sarcoidosis (EOS).

Notable Publications

Author	Pubmed ID	Journal	Application
Mingxin Dong	34744746	Front Pharmacol	WB
Yaying You	36506547	Front Pharmacol	WB
Chun-Xia Shi	32432055	Front Cell Infect Microbiol	WB, IF

Storage

Storage:

Store at -20°C. Stable for one year after shipment.

Storage Buffer:

PBS with 0.02% sodium azide and 50% glycerol pH 7.3.

Aliquoting is unnecessary for -20°C storage

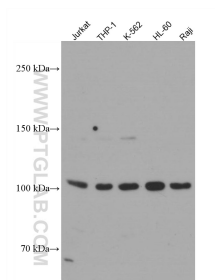
For technical support and original validation data for this product please contact:

T: 4006900926

E: Proteintech-CN@ptglab.comW: ptgcn.com

This product is exclusively available under Proteintech Group brand and is not available to purchase from any other manufacturer.

Selected Validation Data



Various lysates were subjected to SDS PAGE followed by western blot with 66710-1-Ig (NOD2 antibody) at dilution of 1:2000 incubated at room temperature for 1.5 hours.