

For Research Use Only

ATP5O Monoclonal antibody

Catalog Number: 66696-1-Ig



Basic Information

| | | |
|--|--|---|
| Catalog Number: 66696-1-Ig | GenBank Accession Number: BC021233 | Purification Method: Protein A purification |
| Size: 1000 µg/ml | GeneID (NCBI): 539 | CloneNo.: 1D3B8 |
| Source: Mouse | UNIPROT ID: P48047 | Recommended Dilutions: WB 1:2000-1:10000 IHC 1:500-1:2000 IF 1:50-1:500 |
| Isotype: IgG1 | Full Name: ATP synthase, H ⁺ transporting, mitochondrial F1 complex, O subunit | |
| Immunogen Catalog Number: AG1458 | Calculated MW: 23 kDa | |
| | Observed MW: 23-25 kDa | |

Applications

Tested Applications:
IF/ICC, IHC, WB, ELISA

Species Specificity:
Human

Note-IHC: suggested antigen retrieval with **TE buffer pH 9.0**; (*) Alternatively, antigen retrieval may be performed with **citrate buffer pH 6.0**

Positive Controls:

WB: HeLa cells, HEK-293 cells, HepG2 cells, LNCaP cells, A549 cells, NCI-H1299 cells, Jurkat cells, K-562 cells, THP-1 cells

IHC: human liver cancer tissue, human colon cancer tissue

IF: HeLa cells,

Background Information

ATP5O(ATP synthase subunit O, mitochondrial) is also named as ATPO, OSCP and belongs to the ATPase delta chain family. The gene encodes the oligomycin sensitivity-conferring protein (OSCP) of ATP synthase. The predicted polypeptide is 213 amino acids long with more than 80% identity to the bovine and mouse homologs and it is expressed at highest levels in muscle and heart by the northern blot(PMID:7490082). Many studies have indicated that mitochondrial dysfunction is central to the development of most age-related human diseases including neurodegenerative diseases, cancer, and type 2 diabetes.

Storage

Storage:
Store at -20°C. Stable for one year after shipment.
Storage Buffer:
PBS with 0.02% sodium azide and 50% glycerol pH 7.3.
Aliquoting is unnecessary for -20°C storage

For technical support and original validation data for this product please contact:

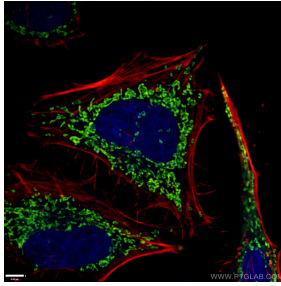
T: 4006900926

E: Proteintech-CN@ptglab.com

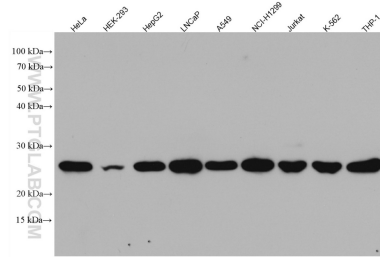
W: ptgcn.com

This product is exclusively available under Proteintech Group brand and is not available to purchase from any other manufacturer.

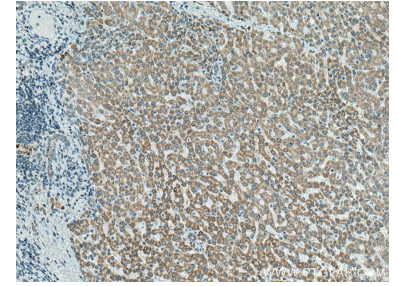
Selected Validation Data



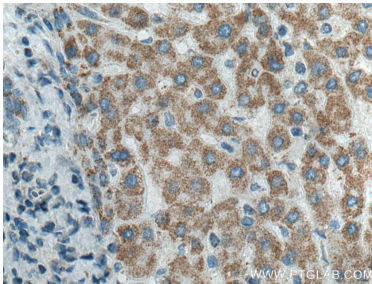
Immunofluorescent analysis of (4% PFA) fixed HeLa cells using 66696-1-Ig (ATP50 antibody), at dilution of 1:200 and CoraLite®488-Conjugated AffiniPure Goat Anti-Mouse IgG(H+L).



Various lysates were subjected to SDS PAGE followed by western blot with 66696-1-Ig (ATP50 antibody) at dilution of 1:5000 incubated at room temperature for 1.5 hours.



Immunohistochemical analysis of paraffin-embedded human liver cancer tissue slide using 66696-1-Ig (ATP50 antibody) at dilution of 1:1000 (under 10x lens). Heat mediated antigen retrieval with Tris-EDTA buffer (pH 9.0).



Immunohistochemical analysis of paraffin-embedded human liver cancer tissue slide using 66696-1-Ig (ATP50 antibody) at dilution of 1:1000 (under 40x lens). Heat mediated antigen retrieval with Tris-EDTA buffer (pH 9.0).