

For Research Use Only

CALD1 Monoclonal antibody, PBS Only (Detector)

Catalog Number: 66693-2-PBS



Basic Information

Catalog Number:

66693-2-PBS

Concentration:

1 mg/ml

Source:

Mouse

Isotype:

IgG2b

Immunogen Catalog Number:

AG13676

GenBank Accession Number:

BC040354

GeneID (NCBI):

800

UNIPROT ID:

Q05682

Full Name:

caldesmon 1

Calculated MW:

538 aa, 63 kDa

Purification Method:

Protein A purification

CloneNo.:

1B8B3

Applications

Tested Applications:

Cytometric bead array, Indirect ELISA, Sample test

Species Specificity:

human

Background Information

Storage

Storage:

Store at -80°C.

The product is shipped with ice packs. Upon receipt, store it immediately at -80°C

Storage Buffer:

PBS only, pH7.3

For technical support and original validation data for this product please contact:

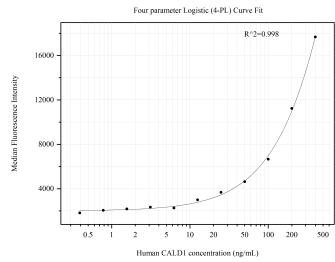
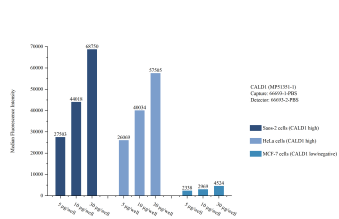
T: 4006900926

E: Proteintech-CN@ptglab.com

W: ptgcn.com

This product is exclusively available under Proteintech Group brand and is not available to purchase from any other manufacturer.

Selected Validation Data



Sample test of MP51351-1, CALD1 Monoclonal Matched Antibody Pair, PBS Only. Capture antibody: 66693-1-PBS. Detection antibody: 66693-2-PBS.

Cytometric bead array standard curve of MP51351-1, CALD1 Monoclonal Matched Antibody Pair, PBS Only. Capture antibody: 66693-1-PBS. Detection antibody: 66693-2-PBS. Standard:Ag13676. Range: 0.391-400 ng/mL.