

For Research Use Only

# CALD1 Monoclonal antibody, PBS Only

Catalog Number: 66693-1-PBS

Featured Product



## Basic Information

Catalog Number:

66693-1-PBS

Size:

1mg/ml

Source:

Mouse

Isotype:

IgG2b

Immunogen Catalog Number:

AG13676

GenBank Accession Number:

BC040354

GeneID (NCBI):

800

UNIPROT ID:

Q05682

Full Name:

caldesmon 1

Calculated MW:

538 aa, 63 kDa

Observed MW:

70 kDa~75 kDa

Purification Method:

Protein A purification

CloneNo.:

1E1C11

## Applications

Tested Applications:

WB, IHC, IF/ICC, FC (Intra), ELISA

Species Specificity:

human, mouse, rat

## Background Information

### Storage

Storage:

Store at -80°C.

The product is shipped with ice packs. Upon receipt, store it immediately at -80°C

Storage Buffer:

PBS Only

For technical support and original validation data for this product please contact:

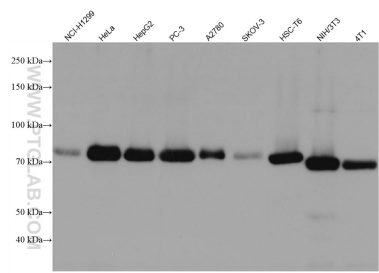
T: 4006900926

E: [Proteintech-CN@ptglab.com](mailto:Proteintech-CN@ptglab.com)

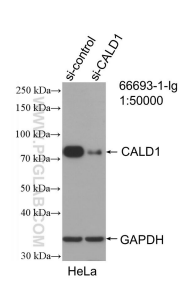
W: [ptgcn.com](http://ptgcn.com)

This product is exclusively available under Proteintech Group brand and is not available to purchase from any other manufacturer.

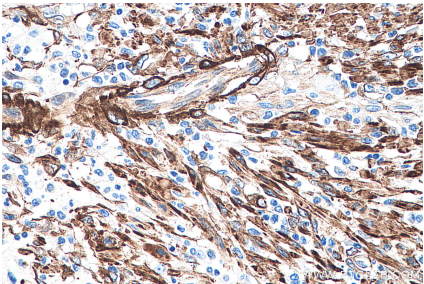
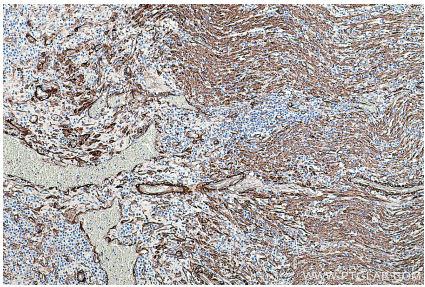
Selected Validation Data



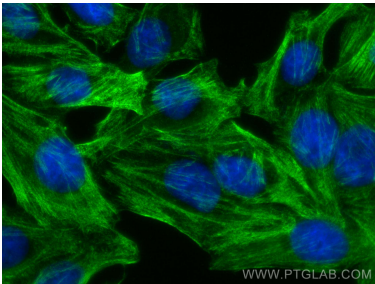
Various lysates were subjected to SDS PAGE followed by western blot with 66693-1-Ig (CALD1 antibody) at dilution of 1:10000 incubated at room temperature for 1.5 hours. This data was developed using the same antibody clone with 66693-1-PBS in a different storage buffer formulation.



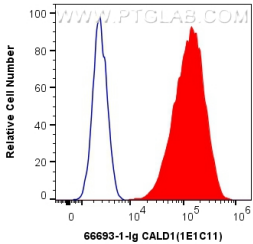
WB result of CALD1 antibody (66693-1-Ig; 1:50000; incubated at room temperature for 1.5 hours) with sh-Control and sh-CALD1 transfected HeLa cells. This data was developed using the same antibody clone with 66693-1-PBS in a different storage buffer formulation.



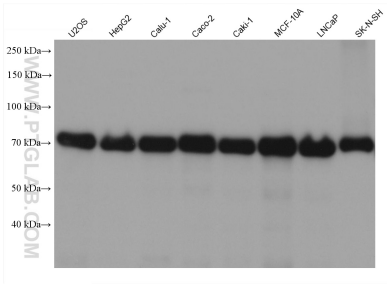
Immunohistochemical analysis of paraffin-embedded human colon cancer tissue slide using 66693-1-Ig (CALD1 antibody) at dilution of 1:4000 (under 40x lens). Heat mediated antigen retrieval with Tris-EDTA buffer (pH 9.0). This data was developed using the same antibody clone with 66693-1-PBS in a different storage buffer formulation.



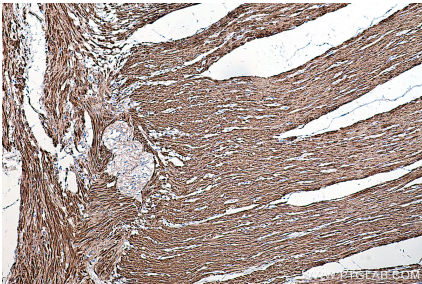
Immunofluorescent analysis of (-20°C Methanol) fixed HepG2 cells using CALD1 antibody (66693-1-Ig, Clone: 1E1C11) at dilution of 1:400 and Coralite®488-Conjugated AffiniPure Goat Anti-Mouse IgG(H+L). This data was developed using the same antibody clone with 66693-1-PBS in a different storage buffer formulation.



1X10<sup>6</sup> HeLa cells were intracellularly stained with 0.4 ug Anti-Human CALD1 (66693-1-Ig, Clone: 1E1C11) and Coralite®488-Conjugated AffiniPure Goat Anti-Mouse IgG(H+L) at dilution 1:1000 (red), or 0.4 ug Mouse IgG2b Isotype Control (MPC-11) (65128-1-Ig, Clone: MPC-11) (blue). Cells were fixed with 4% PFA and permeabilized with Flow Cytometry Perm Buffer (PF00011-C). This data was developed using the same antibody clone with 66693-1-PBS in a



Various lysates were subjected to SDS PAGE followed by western blot with 66693-1-Ig (CALD1 antibody) at dilution of 1:20000 incubated at room temperature for 1.5 hours. This data was developed using the same antibody clone with 66693-1-PBS in a different storage buffer formulation.



Immunohistochemical analysis of paraffin-embedded human colon tissue slide using 66693-1-Ig (CALD1 antibody) at dilution of 1:4000 (under 10x lens). Heat mediated antigen retrieval with Tris-EDTA buffer (pH 9.0). This data was developed using the same antibody clone with 66693-1-PBS in a different storage buffer formulation.