

For Research Use Only

# CALD1 Monoclonal antibody

Catalog Number: 66693-1-Ig

Featured Product

3 Publications



## Basic Information

Catalog Number:

66693-1-Ig

Concentration:

1381 ug/ml

Source:

Mouse

Isotype:

IgG2b

Immunogen Catalog Number:

AG13676

GenBank Accession Number:

BC040354

GeneID (NCBI):

800

UNIPROT ID:

Q05682

Full Name:

caldesmon 1

Calculated MW:

538 aa, 63 kDa

Observed MW:

70 kDa~75 kDa

Purification Method:

Protein A purification

CloneNo.:

1E1C11

Recommended Dilutions:

WB 1:2000-1:10000

IHC 1:2000-1:8000

IF/ICC 1:200-1:800

## Applications

Tested Applications:

WB, IHC, IF/ICC, FC (Intra), ELISA

Cited Applications:

WB, IF

Species Specificity:

human, mouse, rat

Cited Species:

human

**Note-IHC: suggested antigen retrieval with TE buffer pH 9.0; (\*) Alternatively, antigen retrieval may be performed with citrate buffer pH 6.0**

Positive Controls:

**WB** : NCI-H1299 cells, HeLa cells, U2OS cells, HepG2 cells, PC-3 cells, SKOV-3 cells, A2780 cells, HSC-T6 cells, NIH/3T3 cells, 4T1 cells, Calu-1 cells, Caco-2 cells, Caki-1 cells, MCF-10A cells, LNCaP cells, SK-N-SH cells

**IHC** : human colon cancer tissue, human colon tissue, human hysterosarcoma tissue, mouse colon tissue

**IF/ICC** : HepG2 cells, HeLa cells

## Background Information

### Notable Publications

Author	Pubmed ID	Journal	Application
Yuzo Yoshida	35806129	Int J Mol Sci	IF
Hongyu Su	39476475	Placenta	WB
Yaowen Zhang	38322113	Int J Clin Pract	WB

## Storage

Storage:

Store at -20°C. Stable for one year after shipment.

Storage Buffer:

PBS with 0.02% sodium azide and 50% glycerol pH 7.3.

Aliquoting is unnecessary for -20°C storage

For technical support and original validation data for this product please contact:

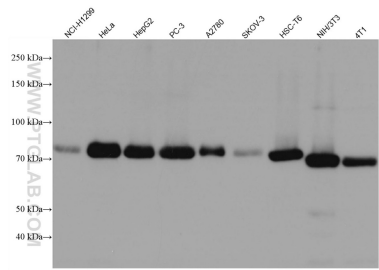
T: 4006900926

E: Proteintech-CN@ptglab.com

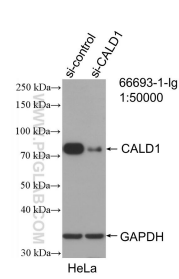
W: ptgcn.com

This product is exclusively available under Proteintech Group brand and is not available to purchase from any other manufacturer.

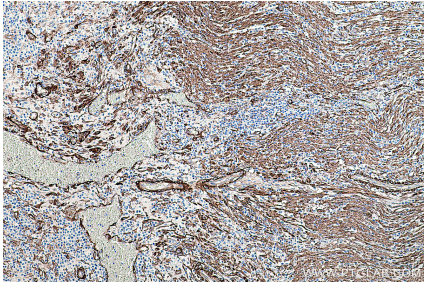
Selected Validation Data



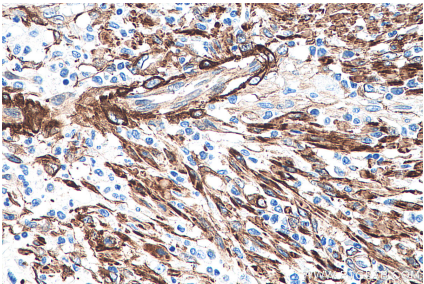
Various lysates were subjected to SDS PAGE followed by western blot with 66693-1-Ig (CALD1 antibody) at dilution of 1:10000 incubated at room temperature for 1.5 hours.



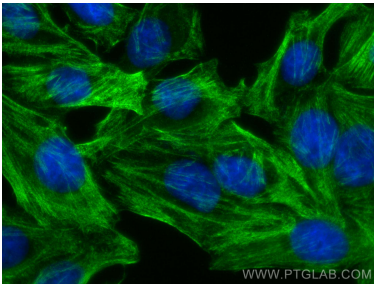
WB result of CALD1 antibody (66693-1-Ig; 1:50000; incubated at room temperature for 1.5 hours) with sh-Control and sh-CALD1 transfected HeLa cells.



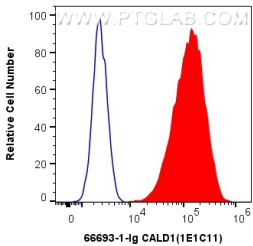
Immunohistochemical analysis of paraffin-embedded human colon cancer tissue slide using 66693-1-Ig (CALD1 antibody) at dilution of 1:4000 (under 10x lens). Heat mediated antigen retrieval with Tris-EDTA buffer (pH 9.0).



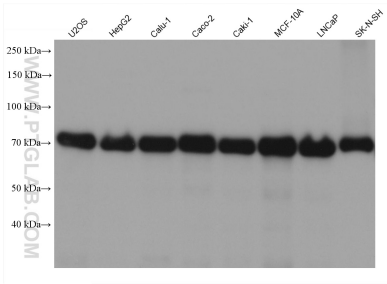
Immunohistochemical analysis of paraffin-embedded human colon cancer tissue slide using 66693-1-Ig (CALD1 antibody) at dilution of 1:4000 (under 40x lens). Heat mediated antigen retrieval with Tris-EDTA buffer (pH 9.0).



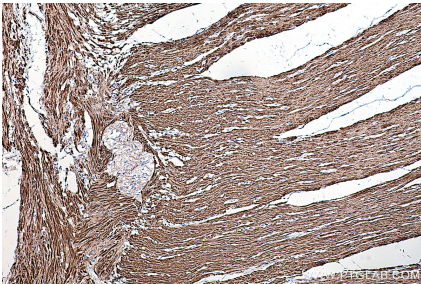
Immunofluorescent analysis of (-20°C Methanol) fixed HepG2 cells using CALD1 antibody (66693-1-Ig, Clone: 1E1C11) at dilution of 1:400 and CoraLite®488-Conjugated AffiniPure Goat Anti-Mouse IgG(H+L).



1X10<sup>6</sup> HeLa cells were intracellularly stained with 0.4 ug Anti-Human CALD1 (66693-1-Ig, Clone:1E1C11) and CoraLite®488-Conjugated AffiniPure Goat Anti-Mouse IgG(H+L) at dilution 1:1000 (red), or 0.4 ug Mouse IgG2b Isotype Control (MPC-11) (65128-1-Ig, Clone: MPC-11) (blue). Cells were fixed with 4% PFA and permeabilized with Flow Cytometry Perm Buffer (PF00011-C).



Various lysates were subjected to SDS PAGE followed by western blot with 66693-1-Ig (CALD1 antibody) at dilution of 1:20000 incubated at room temperature for 1.5 hours.



Immunohistochemical analysis of paraffin-embedded human colon tissue slide using 66693-1-Ig (CALD1 antibody) at dilution of 1:4000 (under 10x lens). Heat mediated antigen retrieval with Tris-EDTA buffer (pH 9.0).