

# ERC1 Monoclonal antibody

Catalog Number: 66681-1-Ig **1 Publications**

## Basic Information

### Catalog Number:

66681-1-Ig

### Size:

1200 µg/ml

### Source:

Mouse

### Isotype:

IgG1

### Immunogen Catalog Number:

AG17665

### GenBank Accession Number:

BC132782

### GeneID (NCBI):

23085

### UNIPROT ID:

Q8IUD2

### Full Name:

ELKS/RAB6-interacting/CAST family member 1

### Calculated MW:

1116 aa, 128 kDa

### Observed MW:

135 kDa

### Purification Method:

Protein G purification

### CloneNo.:

2A5B9

### Recommended Dilutions:

WB 1:5000-1:50000

## Applications

### Tested Applications:

WB, ELISA

### Cited Applications:

WB

### Species Specificity:

Human, Mouse, Rat

### Cited Species:

canine

### Positive Controls:

WB : HeLa cells, HEK-293 cells, HepG2 cells, Jurkat cells, HSC-T6, NIH/3T3 cells

## Background Information

ERC is an acronym based on previous separate namings of members of this protein family, ELKS, Rab6IP2 and CAST (PMID: 12391317). They are known to bind RIMs, the active zone proteins that regulate neurotransmitter release. ERC1 (ELKS) is an essential regulatory subunit of the IKK complex and likely functions by recruiting IκBα to the complex (PMID: 15218148). Multiple isoforms of ERC1 mRNA are generated by alternative splicing (PMID: 12203787). There are two known splice variants of ERC1 protein that differ at their C termini, ERC1a and ERC1b. ERC1a is ubiquitously expressed, whereas ERC1b is brain-specific (PMID: 12391317; 12923177).

## Notable Publications

Author	Pubmed ID	Journal	Application
Yuta Homma	34023780	Biochem Biophys Res Commun	WB

## Storage

### Storage:

Store at -20°C. Stable for one year after shipment.

### Storage Buffer:

PBS with 0.02% sodium azide and 50% glycerol pH 7.3.

Aliquoting is unnecessary for -20°C storage

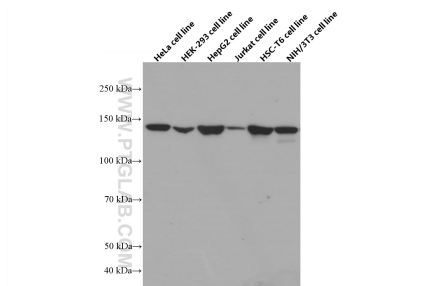
For technical support and original validation data for this product please contact:

T: 4006900926

E: [Proteintech-CN@ptglab.com](mailto:Proteintech-CN@ptglab.com)W: [ptgcn.com](http://ptgcn.com)

This product is exclusively available under Proteintech Group brand and is not available to purchase from any other manufacturer.

## Selected Validation Data



Various lysates were subjected to SDS PAGE followed by western blot with 66681-1-Ig (ERC1 antibody) at dilution of 1:10000 incubated at room temperature for 1.5 hours.