

For Research Use Only

# PSMA/GCPII Monoclonal antibody, PBS Only (Detector)

Catalog Number: 66678-1-PBS



## Basic Information

<b>Catalog Number:</b> 66678-1-PBS	<b>GenBank Accession Number:</b> BC025672	<b>Purification Method:</b> Protein A purification
<b>Concentration:</b> 1mg/ml	<b>GeneID (NCBI):</b> 2346	<b>CloneNo.:</b> 3G4E12
<b>Source:</b> Mouse	<b>UNIPROT ID:</b> Q04609	
<b>Isotype:</b> IgG1	<b>Full Name:</b> folate hydrolase (prostate-specific membrane antigen) 1	
<b>Immunogen Catalog Number:</b> AG16594	<b>Calculated MW:</b> 719 aa, 81 kDa	
	<b>Observed MW:</b> 100-120 kDa	

## Applications

**Tested Applications:**  
WB, IHC, IF/ICC, IF-P, Cytometric bead array, Indirect ELISA

**Species Specificity:**  
human, rat

## Background Information

PSMA(Prostate-specific membrane antigen) is also named as FOLH1, FOLH, NAALAD1, PSM and belongs to the peptidase M28 family. PSMA is a 100-120 kDa integral transmembrane glycoprotein, considered to be a highly specific marker of the prostate gland, and has successfully been used as a marker of circulating prostatic epithelial cells(PMID:10074909; 15680901). It is involved in conversion of the major neurotransmitter (NAA) to NAA and free glutamate. It has 8 isoforms produced by alternative splicing.

## Storage

**Storage:**  
Store at -80°C.  
**The product is shipped with ice packs. Upon receipt, store it immediately at -80°C**

**Storage Buffer:**  
PBS Only

For technical support and original validation data for this product please contact:

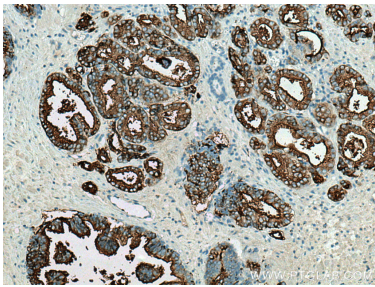
T: 4006900926

E: [Proteintech-CN@ptglab.com](mailto:Proteintech-CN@ptglab.com)

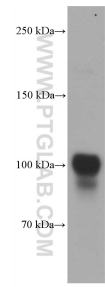
W: [ptgcn.com](http://ptgcn.com)

**This product is exclusively available under Proteintech Group brand and is not available to purchase from any other manufacturer.**

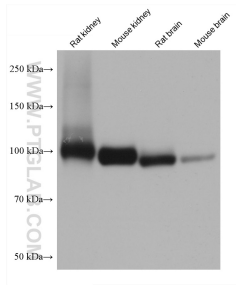
Selected Validation Data



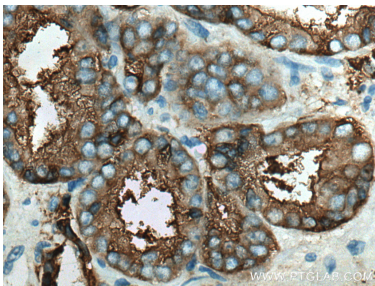
Immunohistochemical analysis of paraffin-embedded human prostate cancer tissue slide using 66678-1-Ig (PSMA/GCPII antibody) at dilution of 1:2000 (under 10x lens). Heat mediated antigen retrieval with Tris-EDTA buffer (pH 9.0). This data was developed using the same antibody clone with 66678-1-PBS in a different storage buffer formulation.



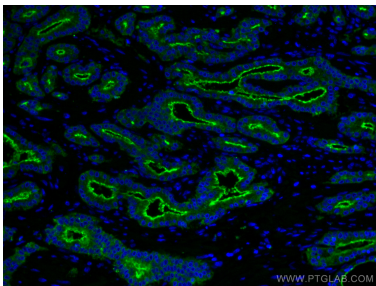
LNCaP cells were subjected to SDS PAGE followed by western blot with 66678-1-Ig (FOLH1 antibody) at dilution of 1:8000 incubated at room temperature for 1.5 hours. This data was developed using the same antibody clone with 66678-1-PBS in a different storage buffer formulation.



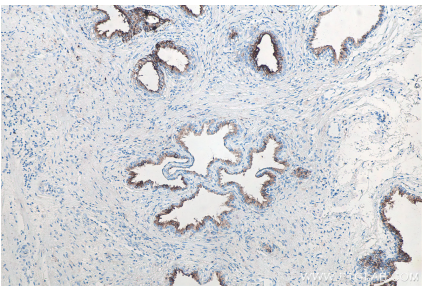
Various lysates were subjected to SDS PAGE followed by western blot with 66678-1-Ig (PSMA/GCPII antibody) at dilution of 1:20000 incubated at room temperature for 1.5 hours. This data was developed using the same antibody clone with 66678-1-PBS in a different storage buffer formulation.



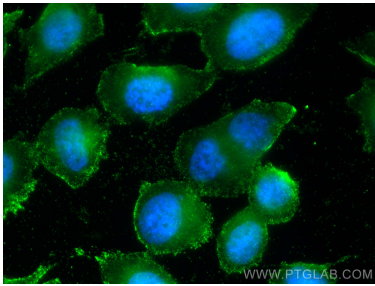
Immunohistochemical analysis of paraffin-embedded human prostate cancer tissue slide using 66678-1-Ig (PSMA/GCPII antibody) at dilution of 1:2000 (under 40x lens). Heat mediated antigen retrieval with Tris-EDTA buffer (pH 9.0). This data was developed using the same antibody clone with 66678-1-PBS in a different storage buffer formulation.



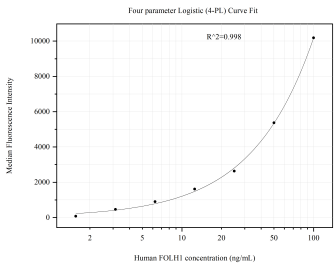
Immunofluorescent analysis of (4% PFA) fixed human prostate cancer tissue using PSMA/GCPII antibody (66678-1-Ig, Clone: 3G4E12 ) at dilution of 1:400 and CoraLite®488-Conjugated AffiniPure Goat Anti-Mouse IgG(H+L). This data was developed using the same antibody clone with 66678-1-PBS in a different storage buffer formulation.



Immunohistochemical analysis of paraffin-embedded human prostate cancer tissue slide using 66678-1-Ig (PSMA/GCPII antibody) at dilution of 1:4000 (under 10x lens). Heat mediated antigen retrieval with Tris-EDTA buffer (pH 9.0). This data was developed using the same antibody clone with 66678-1-PBS in a different storage buffer formulation.



Immunofluorescent analysis of (-20°C Methanol) fixed PC-3 cells using PSMA/GCPII antibody (66678-1-Ig, Clone: 3G4E12 ) at dilution of 1:400 and CoraLite®488-Conjugated AffiniPure Goat Anti-Mouse IgG(H+L). This data was developed using the same antibody clone with 66678-1-PBS in a different storage buffer formulation.



Cytometric bead array standard curve of MP51112-1, FOLH1 Monoclonal Matched Antibody Pair, PBS Only. Capture antibody: 66678-2-PBS. Detection antibody: 66678-1-PBS. Standard: Ag16594. Range: 1.563-100 ng/mL.