

ASF/SF2 Monoclonal antibody, PBS Only

Catalog Number: 66671-1-PBS

Basic Information

Catalog Number: 66671-1-PBS	GenBank Accession Number: BC010264	Purification Method: Protein G purification
Size: 1 mg/ml	GeneID (NCBI): 6426	CloneNo.: 1A6C5
Source: Mouse	UNIPROT ID: Q07955	
Isotype: IgG1	Full Name: splicing factor, arginine/serine-rich 1	
Immunogen Catalog Number: AG3626	Calculated MW: 248 aa, 28 kDa	
	Observed MW: 32 kDa, 28 kDa, 22 kDa	

Applications

Tested Applications:
WB, IP, Indirect ELISA, IHC, IF

Species Specificity:
Human, mouse, rat

Background Information

SFRS1, also named as ASF, SF2, SF2P33, SFRS1 and ASF-1, belongs to the splicing factor SR family. It plays a role in preventing exon skipping, ensuring the accuracy of splicing and regulating alternative splicing. SFRS1 interacts with other spliceosomal components, via the RS domains, to form a bridge between the 5'- and 3'-splice site binding components, U1 snRNP and U2AF. Isoform ASF-2 and isoform ASF-3 act as splicing repressors. This antibody can recognize all the 3 isoforms (28kd, 33kd and 22kd) of SFRS1.

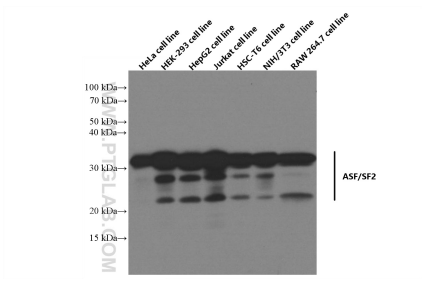
Storage

Storage:
Store at -80°C.

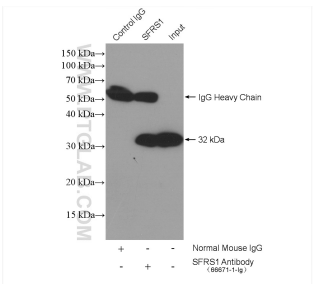
The product is shipped with ice packs. Upon receipt, store it immediately at -80°C

Storage Buffer:
PBS Only

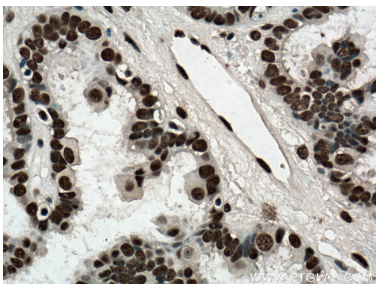
Selected Validation Data



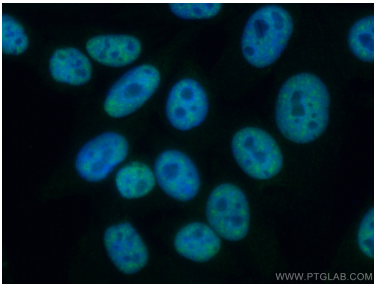
Various lysates were subjected to SDS PAGE followed by western blot with 66671-1-Ig (ASF/SF2 antibody) at dilution of 1:20000 incubated at room temperature for 1.5 hours. This data was developed using the same antibody clone with 66671-1-PBS in a different storage buffer formulation.



IP result of anti-ASF/SF2 (IP:66671-1-Ig, 5ug; Detection:66671-1-Ig 1:5000) with HeLa cells lysate 2200 ug. This data was developed using the same antibody clone with 66671-1-PBS in a different storage buffer formulation.



Immunohistochemical analysis of paraffin-embedded human ovary tumor tissue slide using 66671-1-Ig (ASF/SF2 antibody) at dilution of 1:400 (under 40x lens. Heat mediated antigen retrieval with Tris-EDTA buffer (pH 9.0). This data was developed using the same antibody clone with 66671-1-PBS in a different storage buffer formulation.



Immunofluorescent analysis of (4% PFA) fixed HepG2 cells using ASF/SF2 antibody (66671-1-Ig, Clone: 1A6C5) at dilution of 1:400 and CoraLite®488-Conjugated AffiniPure Goat Anti-Mouse IgG(H+L). This data was developed using the same antibody clone with 66671-1-PBS in a different storage buffer formulation.