

PDIA6 Monoclonal antibody

 Catalog Number: 66669-1-Ig 1 Publications

Basic Information

Catalog Number: 66669-1-Ig	GenBank Accession Number: BC001312	Purification Method: Protein A purification
Size: 1000 µg/ml	GeneID (NCBI): 10130	CloneNo.: 1G2D4
Source: Mouse	UNIPROT ID: Q15084	Recommended Dilutions: WB 1:5000-1:50000 IHC 1:150-1:600 IF/ICC 1:400-1:1600
Isotype: IgG1	Full Name: protein disulfide isomerase family A, member 6	
Immunogen Catalog Number: AG27608	Calculated MW: 48 kDa, 54 kDa	
	Observed MW: 54 kDa	

Applications

Tested Applications: WB, IF/ICC, IHC, ELISA	Positive Controls:
Cited Applications: WB	WB : LNCaP cells, HeLa cells, HEK-293 cells, HepG2 cells, Jurkat cells, K-562 cells, HSC-T6 cells, NIH/3T3 cells, 4T1 cells
Species Specificity: Human, Mouse, Rat	IHC : human liver cancer tissue, human kidney tissue
Cited Species: zebrafish	IF/ICC : HepG2 cells,
Note-IHC: suggested antigen retrieval with TE buffer pH 9.0; (*) Alternatively, antigen retrieval may be performed with citrate buffer pH 6.0	

Background Information

PDIA6 (Protein disulfide-isomerase A6) is also named as ERP5, P5, TXNDC7 and belongs to the protein disulfide isomerase family. It is one of the endoplasmic reticulum (ER) resident proteins that catalyze the formation, reduction, and isomerization of disulfide bonds in proteins and is thought to play a role in the folding of disulfide-bonded proteins (PMID:7590364). It has 2 isoforms produced by alternative splicing. This antibody is specific to PDIA6.

Notable Publications

Author	Pubmed ID	Journal	Application
Yongkang Zhang	30273864	Environ Pollut	WB

Storage

Storage:
Store at -20°C. Stable for one year after shipment.
Storage Buffer:
PBS with 0.02% sodium azide and 50% glycerol pH 7.3.
 Aliquoting is unnecessary for -20°C storage

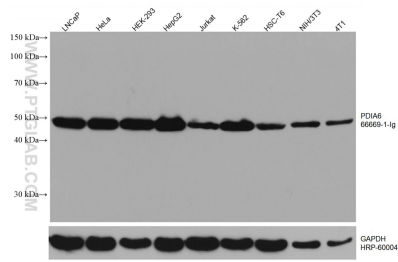
For technical support and original validation data for this product please contact:

T: 4006900926

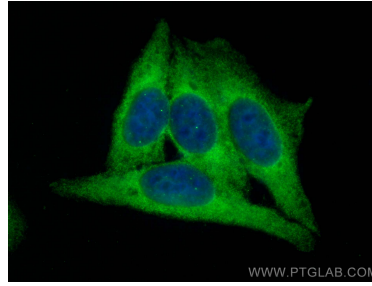
E: Proteintech-CN@ptglab.comW: ptgcn.com

This product is exclusively available under Proteintech Group brand and is not available to purchase from any other manufacturer.

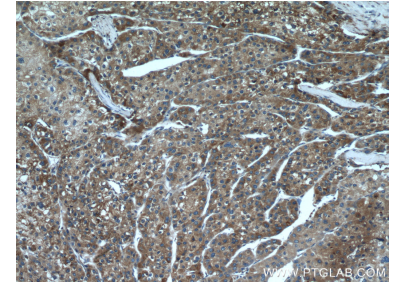
Selected Validation Data



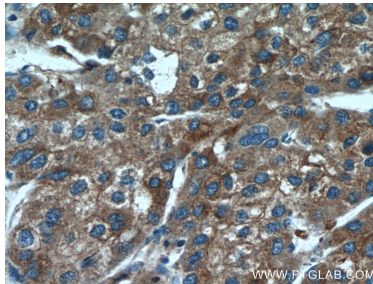
Various lysates were subjected to SDS PAGE followed by western blot with 66669-1-Ig (PDIA6 antibody) at dilution of 1:20000 incubated at room temperature for 1.5 hours. The membrane was stripped and reblotted with HRP-conjugated GAPDH Monoclonal antibody (HRP-60004) as loading control.



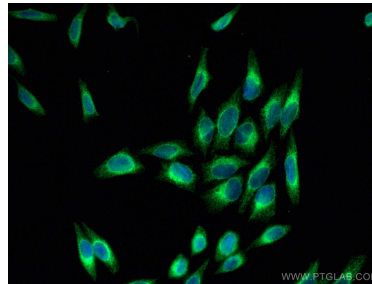
Immunofluorescent analysis of (-20°C Ethanol) fixed HepG2 cells using PDI A6 antibody (66669-1-Ig, Clone: 1G2D4) at dilution of 1:800 and Coralite®488-Conjugated AffiniPure Goat Anti-Mouse IgG(H+L).



Immunohistochemical analysis of paraffin-embedded human liver cancer tissue slide using 66669-1-Ig (PDIA6 antibody) at dilution of 1:300 (under 10x lens).



Immunohistochemical analysis of paraffin-embedded human liver cancer tissue slide using 66669-1-Ig (PDIA6 antibody) at dilution of 1:300 (under 40x lens).



Immunofluorescent analysis of (-20°C Methanol) fixed HepG2 cells using PDI A6 antibody (66669-1-Ig, Clone: 1G2D4) at dilution of 1:400 and Coralite®488-Conjugated AffiniPure Goat Anti-Mouse IgG(H+L).